

UST



2021/1

www.ust.ind.br

atendimento@ust.ind.br

atendimento2@ust.ind.br

51 35722182 - 35887080 - 35722596

Indústria Brasileira

Escolha da dureza das pontas Phillips :

“X” – dureza alta – para aplicações de baixo torque com elevada resistência ao desgaste. Quando ocorrer quebras, usar dureza “I”.

“I” – dureza intermediária – para aplicações com torques médios com relativa resistência ao desgaste. Quando ocorrer quebras use dureza “R”, e desgaste, use dureza “X”.

“R” – dureza baixa – para as aplicações com torque elevado.

Pontas de mesma dureza usadas em diferentes aplicações, resultarão em rendimentos diferentes.

Fatores que determinam a vida das ferramentas:

Falta de cuidado e bom senso dos operadores, parafusadeira com torque desajustado, deslocamento do eixo de giro durante o aperto, acionamento da parafusadeira antes de encaixar no parafuso, uso de ponta de bitola errada, etc.

Cuidado:

- Ferramentas de qualquer espécie podem se fragmentar. É de responsabilidade do usuário o uso de equipamento de proteção individual – EPI – apropriado, especialmente óculos e luvas.

Tipos de encaixes das pontas :

Encaixe tipo “C”:

Friso estreito para retenção no anel do adaptador.



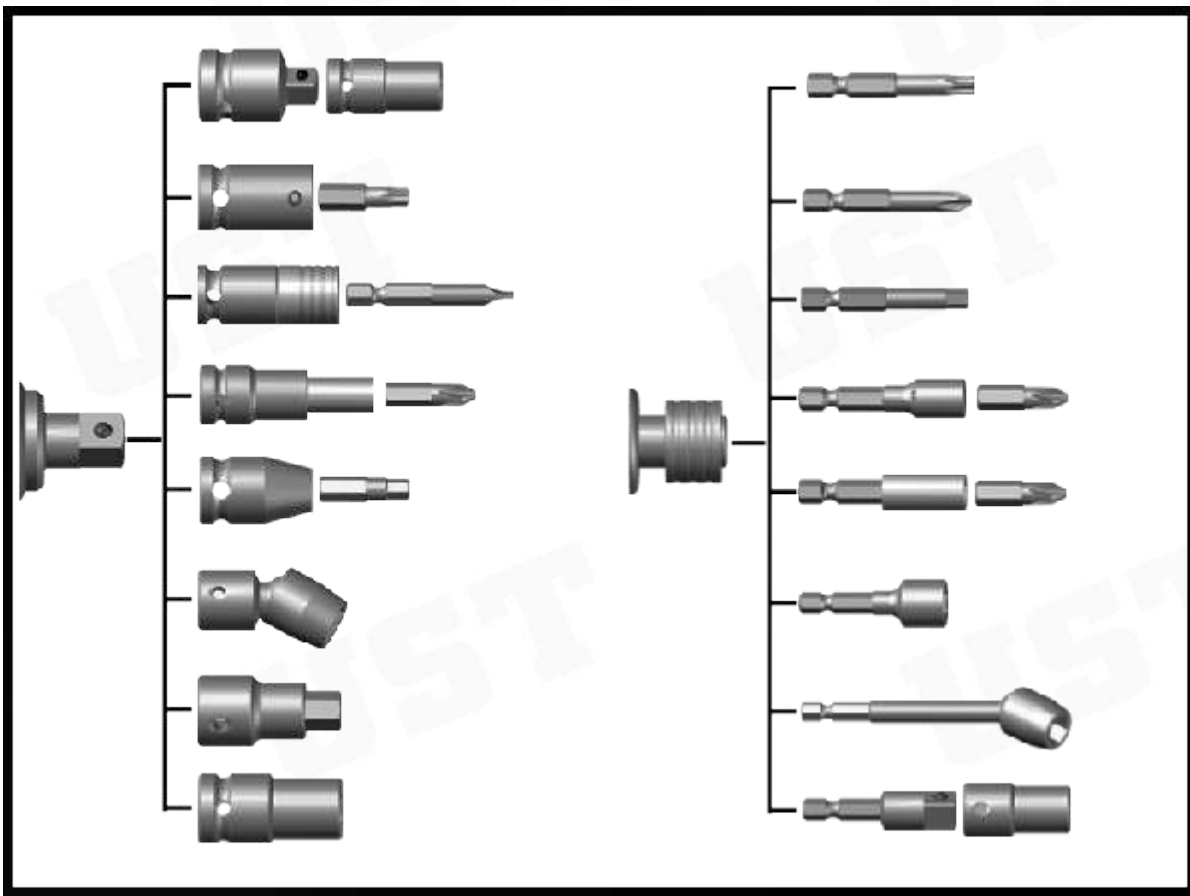
Encaixe tipo “E”:

Friso largo para retenção na esfera da parafusadeira.

Ponta para uso direto na parafusadeira



Pontas Phillips	4
Pontas encaixe automático	13
Pontas Allen	19
Pontas Torx	21
Pontas Torq-set Triwing	25
Pontas Multidentente	26
Chaves Canhão	27
Adaptador para pontas - segurador	32
Adaptador para soquete	33
Redução - adaptador	34
Extensão	35
Soquete para prisioneiro	37
Junta universal	38
Soquete articulado	39
Soquete de impacto 1/4	44
Soquete de impacto 3/8	47
Soquete de impacto 1/2	54
Soquete de impacto 3/4	64
Soquete de impacto 1	70
Soquete de impacto 1.1/2	75
Soquete de impacto 2.1/2	76
Soquete Phillips - fenda	77
Soquete Allen	78
Soquete Torx	84
Soquete Multidentente	85
Soquete ribe	86
Soquete Torx interno	87



Pontas Phillips

DIN 3126 e 5260



Encaixe tipo "C" - 1/4" - Torneada



Em suporte magnético usar pontas com comprimento 25 mm

Nº	Comprimento			Ø corpo
	25	38	50	
0	C68 0 T			3,0
1	C68 1 T	C68 1 38T	C68 1 50T	4,5
2	C68 2 T	C68 2 38T	C68 2 50T	6,0

Durezas: "X"- torques baixos - resistência ao desgaste alta.
"I" - torques médios - resistência ao desgaste média.
"R"- Torques altos - resistência ao desgaste baixa.

Encaixe tipo "C" - 1/4"



Em suporte magnético usar pontas com comprimento 25 mm



Nº	Comprimento		
	25	38	50
0	C68 0		
1	C68 1	C68 1 38	C68 1 50
2	C68 2	C68 2 38	C68 2 50
3	C68 3	C68 3 38	C68 3 50
4	C68 4	C68 4 38	

Parafusos pintados ou banhados ficam com a cavidade phillips reduzida e para estes casos fabricamos pontas especiais.

Pontas Phillips



DIN 3126 e 5260



Encaixe tipo "E" - 1/4"



N°	Comprimento								Ø corpo
	50	75	89	100	150	200	250	300	
00	E68 00 50	E68 00 75							1,8
0	E68 0 50	E68 0 75	E68 0 89	E68 0 100					2,0
0,5	E68 0,5 50	E68 0,5 75	E68 0,5 89	E68 0,5 100					2,5
1	E68 1 50	E68 1 75	E68 1 89	E68 1 100	E68 1 150	E68 1 200	E68 1 250	E68 1 300	4,5
1,5	E68 1,5 50	E68 1,5 75	E68 1,5 89	E68 1,5 100	E68 1,5 150				4,5
2	E68 2 50	E68 2 75	E68 2 89	E68 2 100	E68 2 150	E68 2 200	E68 2 250	E68 2 300	6,0
3	E68 3 50	E68 3 75	E68 3 89	E68 3 100	E68 3 150	E68 3 200	E68 3 250		8,0
4	E68 4 50	E68 4 75	E68 4 89	E68 4 100	E68 4 150				10,0

As pontas até 150 mm possuem corpo todo cilíndrico, acima de 150 mm possuem somente 100 mm de corpo cilíndrico.

Não utilize pontas encaixe «E» em suporte magnético.

Durezas: "X"- torques baixos - resistência ao desgaste alta.

"I" - torques médios - resistência ao desgaste média.

"R"- Torques altos - resistência ao desgaste baixa.

Parafusos pintados ou banhados ficam com a cavidade phillips reduzida, e para estes casos fabricamos pontas especiais.

Encaixe tipo "E" 1/4"- dupla



N°	Comprimento							
	50	75	89	100	150	200	250	300
1	D 1 50	D 1 75	D 1 89	D 1 100	D 1 150	D 1 200	D 1 250	D 1 300
2	D 2 50	D 2 75	D 2 89	D 2 100	D 2 150	D 2 200	D 2 250	D 2 300
3	D 3 50	D 3 75	D 3 89	D 3 100	D 3 150	D 3 200	D 3 250	D 3 300

Durezas: "X"- torques baixos - resistência ao desgaste alta.

"I" - torques médios - resistência ao desgaste média.

"R"- Torques altos - resistência ao desgaste baixa.

Parafusos pintados ou banhados ficam com a cavidade phillips reduzida, e para estes casos fabricamos pontas especiais.

Pontas Phillips



DIN 3126 e 5260



Encaixe tipo "E" - 5 mm



Nº	Comprimento					Ø corpo
	50	75	100	150	200	
0	E58 0 50	E58 0 75	E58 0 100	E58 0 150	E58 0 200	2,5
0,5	E58 0,5 50	E58 0,5 75	E58 0,5 100			3,0
1	E58 1 50	E58 1 75	E58 1 100	E58 1 150	E58 1 200	4,0
1,5	E58 1,5 50	E58 1,5 75	E58 1,5 100			4,5
2	E58 2 50	E58 2 75	E58 2 100	E58 2 150	E58 2 200	4,8
3	E58 3 50	E58 3 75	E58 3 100	E58 3 150	E58 3 200	6,0

Durezas: "X"- torques baixos - resistência ao desgaste alta.

"I" - torques médios - resistência ao desgaste média.

"R"- Torques altos - resistência ao desgaste baixa.

Parafusos pintados ou banhados ficam com a cavidade phillips reduzida, e para estes casos fabricamos pontas especiais.

Encaixe tipo "E" 5 mm - dupla



Nº	Comprimento				
	50	75	100	150	200
0	D5 0 50	D5 0 75	D5 0 100	D5 0 150	D5 0 200
1	D5 1 50	D5 1 75	D5 1 100	D5 1 150	D5 1 200
2	D5 2 50	D5 2 75	D5 2 100	D5 2 150	D5 2 200
3	D5 3 50	D5 3 75	D5 3 100	D5 3 150	D5 3 200

Durezas: "X"- torques baixos - resistência ao desgaste alta.

"I" - torques médios - resistência ao desgaste média.

"R"- Torques altos - resistência ao desgaste baixa.

Parafusos pintados ou banhados ficam com a cavidade phillips reduzida, e para estes casos fabricamos pontas especiais.

Pontas Phillips



DIN 3126 e 5260



Encaixe tipo "E" - 1/4"

Com guia cônico interno



Nº	Comprimento		Ø ext.
	75 mm	89 mm	
1	E68C 1 75	E68C 1 89	8
2	E68C 2 75	E68C 2 89	9
3	E68C 3 75	E68C 3 89	11

Permite encaixe seguro entre o parafuso e a ponta.

Durezas: "X" - torques baixos - resistência ao desgaste alta.

"I" - torques médios - resistência ao desgaste média.

"R" - Torques altos - resistência ao desgaste baixa.

Encaixe tipo "C" - 5/16"



Nº	Comprimento				
	32	50	89	100	115
1	C88 1 32	C88 1 50	C88 1 89	C88 1 100	
2	C88 2 32	C88 2 50	C88 2 89	C88 2 100	C88 2 115
3	C88 3 32	C88 3 50	C88 3 89	C88 3 100	C88 3 115
4	C88 4 32	C88 4 50	C88 4 89	C88 4 100	

Uso principal na manutenção de motocicletas.

Dureza "R".

Encaixe tipo "C" - 7/16"

Comprimento 50 mm.



Nº	Referência
2	C118 2 50
3	C118 3 50
4	C118 4 50

Durezas utilizadas: "I" e "R".

Em chave de impacto use dureza "R".

Encaixe com Rosca



Nº	Rosca	Comprimento			Ø
		30	35	45	
1	M 4	R48 1 30	R48 1 35	R48 1 45	6
	M 5	R58 1 30	R58 1 35	R58 1 45	6
	M 6	R68 1 30	R68 1 35	R68 1 45	7
2	M 4	R48 2 30	R48 2 35	R48 2 45	6
	M 5	R58 2 30	R58 2 35	R58 2 45	6
	M 6	R68 2 30	R68 2 35	R68 2 45	7

Fabricamos peças especiais sob desenho.

Durezas: "X" - torques baixos - resistência ao desgaste alta.

"I" - torques médios - resistência ao desgaste média.

Pontas Phillips



DIN 3126 e 5260

Phillips encaixe tipo Hios



Para máquina com encaixe Ø 4 mm.

Nº	Comprimento				Ø Ponta
	40	60	80	100	
00	H48 00 40	H48 00 60	H48 00 80	H48 00 100	1,8x20
0	H48 0 40	H48 0 60	H48 0 80	H48 0 100	2,0x20
0,5	H48 0,5 40	H48 0,5 60	H48 0,5 80	H48 0,5 100	2,5x20
1	H48 1 40	H48 1 60	H48 1 80	H48 1 100	3,0x20
1,5	H48 1,5 40	H48 1,5 60	H48 1,5 80	H48 1,5 100	4,0x20
2	H48 2 40	H48 2 60	H48 2 80	H48 2 100	4,0x20



Para máquina com encaixe Ø 5 mm.

Nº	Comprimento				Ø ponta
	60	80	100	150	
00	H58 00 60	H58 00 80	H58 00 100		1,8 x 30
0	H58 0 60	H58 0 80	H58 0 100	H58 0 150	2,0 x 30
0,5	H58 0,5 60	H58 0,5 80	H58 0,5 100		2,5 x 30
1	H58 1 60	H58 1 80	H58 1 100	H58 1 150	3,0 x 30
1,5	H58 1,5 60	H58 1,5 80	H58 1,5 100		4,5 x 30
2	H58 2 60	H58 2 80	H58 2 100	H58 2 150	5,0



Para máquina com encaixe Ø 6 mm.

Nº	Comprimento				Ø ponta
	65	80	100	150	
1	H68 1 65	H68 1 80	H68 1 100	H68 1 150	3,0 x 30
2	H68 2 65	H68 2 80	H68 2 100	H68 2 150	6,0

Pontas Torx encaixe Hios 4 mm



Torx nº	Encaixe Ø 4 mm				Ø
	40	60	80	100	
1	H4T 1 40	H4T 1 60			1,5x20
2	H4T 2 40	H4T 2 60			1,5x20
3	H4T 3 40	H4T 3 60	H4T 3 80		2,2x20
4	H4T 4 40	H4T 4 60	H4T 4 80		2,2x20
5	H4T 5 40	H4T 5 60	H4T 5 80		2,2x20
6	H4T 6 40	H4T 6 60	H4T 6 80	H4T 6 100	2,2x20
7	H4T 7 40	H4T 7 60	H4T 7 80	H4T 7 100	3,0x20
8	H4T 8 40	H4T 8 60	H4T 8 80	H4T 8 100	3,5x20
9	H4T 9 40	H4T 9 60	H4T 9 80	H4T 9 100	3,5x20
10	H4T 10 40	H4T 10 60	H4T 10 80	H4T 10 100	3,7x20
15	H4T 15 40	H4T 15 60	H4T 15 80	H4T 15 100	4,0x20
20	H4T 20 40	H4T 20 60	H4T 20 80	H4T 20 100	4,0x20

Pontas Torx plus encaixe Hios 4 mm



Torx nº	Encaixe Ø 4 mm				Ø
	40	60	80	100	
3	H4T 3 40P	H4T 3 60P	H4T 3 80P		2,2x20
4	H4T 4 40P	H4T 4 60P	H4T 4 80P		2,2x20
5	H4T 5 40P	H4T 5 60P	H4T 5 80P		2,2x20
6	H4T 6 40P	H4T 6 60P	H4T 6 80P	H4T 6 100P	2,2x20
7	H4T 7 40P	H4T 7 60P	H4T 7 80P	H4T 7 100P	3,0x20
8	H4T 8 40P	H4T 8 60P	H4T 8 80P	H4T 8 100P	3,5x20
9	H4T 9 40P	H4T 9 60P	H4T 9 80P	H4T 9 100P	3,5x20
10	H4T 10 40P	H4T 10 60P	H4T 10 80P	H4T 10 100P	3,7x20
15	H4T 15 40P	H4T 15 60P	H4T 15 80P	H4T 15 100P	4,0x20
20	H4T 20 40P	H4T 20 60P	H4T 20 80P	H4T 20 100P	4,0x20



Pontas Torx encaixe Hios 5 mm



Torx nº	Encaixe Ø 5 mm			Ø
	60	80	100	
6	H5T 6 60	H5T 6 80	H5T 6 100	2,2x30
7	H5T 7 60	H5T 7 80	H5T 7 100	3,0x30
8	H5T 8 60	H5T 8 80	H5T 8 100	3,5x30
9	H5T 9 60	H5T 9 80	H5T 9 100	3,5x30
10	H5T 10 60	H5T 10 80	H5T 10 100	3,7x30
15	H5T 15 60	H5T 15 80	H5T 15 100	4,0x30
20	H5T 20 60	H5T 20 80	H5T 20 100	4,0x30

Pontas Torx plus encaixe Hios 5 mm



Torx nº	Encaixe Ø 5 mm			Ø
	60	80	100	
6	H5T 6 60P	H5T 6 80P	H5T 6 100P	3,2x30
7	H5T 7 60P	H5T 7 80P	H5T 7 100P	3,3x30
8	H5T 8 60P	H5T 8 80P	H5T 8 100P	3,5x30
9	H5T 9 60P	H5T 9 80P	H5T 9 100P	3,5x30
10	H5T 10 60P	H5T 10 80P	H5T 10 100P	3,7x30
15	H5T 15 60P	H5T 15 80P	H5T 15 100P	4,0x30
20	H5T 20 60P	H5T 20 80P	H5T 20 100P	4,0x30

Pontas Allen encaixe Hios 4 mm



Allen	Comprimento				Ø Corpo
	40	60	80	100	
1,0	H46 1 40	H46 1 60	H46 1 80	H46 1 100	1,5x20
1,5	H46 1,5 40	H46 1,5 60	H46 1,5 80	H46 1,5 100	2,0x20
2,0	H46 2 40	H46 2 60	H46 2 80	H46 2 100	3,0x20
2,5	H46 2,5 40	H46 2,5 60	H46 2,5 80	H46 2,5 100	4,0
3,0	H46 3 40	H46 3 60	H46 3 80	H46 3 100	4,0

Pontas Allen encaixe Hios 5 mm



Allen	Comprimento			Ø Corpo
	60	80	100	
1,0	H56 1 60	H56 1 80	H56 1 100	1,5x30
1,5	H56 1,5 60	H56 1,5 80	H56 1,5 100	2,0x30
2,0	H56 2 60	H56 2 80	H56 2 100	3,0x30
2,5	H56 2,5 60	H56 2,5 80	H56 2,5 100	4,0x30
3,0	H56 3 60	H56 3 80	H56 3 100	4,5x30
4,0	H56 4 60	H56 4 80	H56 4 100	5,0x30

Pontas Phillips encaixe 3 mm



Phillips nº	Comprimento				Ø
	50	89	100	127	
00	A38 00 50	A38 00 89	A38 00 100	A38 00 127	1,8 x 30
0	A38 0 50	A38 0 89	A38 0 100	A38 0 127	2,0 x 30
1	A38 1 50	A38 1 89	A38 1 100	A38 1 127	3,0 x 30
2	A38 2 50	A38 2 89	A38 2 100	A38 2 127	3,6

Pontas fenda encaixe 3 mm



Ø x espessura	Comprim. 50 mm
2 x 0,4	A37 2 50
3 x 0,5	A37 3 50
4 x 0,5	A37 4 50
5 x 0,8	A37 5 50

Pontas Torx encaixe 3 mm



Torx nº	Comprimento				Ø
	50	89	100	127	
1	A3T 1 50				1,5 x 30
2	A3T 2 50				1,5 x 30
3	A3T 3 50				2,2 x 30
4	A3T 4 50				2,2 x 30
5	A3T 5 50				3,0 x 30
6	A3T 6 50	A3T 6 89	A3T 6 100	A3T 6 127	3,0 x 30
7	A3T 7 50	A3T 7 89	A3T 7 100	A3T 7 127	3,0 x 30
8	A3T 8 50	A3T 8 89	A3T 8 100	A3T 8 127	3,2 x 30
9	A3T 9 50	A3T 9 89	A3T 9 100	A3T 9 127	3,2 x 30
10	A3T 10 50	A3T 10 89	A3T 10 100	A3T 10 127	3,2 x 30
15	A3T 15 50	A3T 15 89	A3T 15 100	A3T 15 127	3,6
20	A3T 20 50	A3T 20 89	A3T 20 100	A3T 20 127	4,0
25	A3T 25 50	A3T 25 89	A3T 25 100	A3T 25 127	5,0

Pontas Torx plus encaixe 3 mm



Torx nº	Comprimento				Ø
	50	89	100	127	
3	A3T 3 50P				2,2 x 30
4	A3T 4 50P				2,2 x 30
5	A3T 5 50P				3,0 x 30
6	A3T 6 50P	A3T 6 89P	A3T 6 100P	A3T 6 127P	3,0 x 30
7	A3T 7 50P	A3T 7 89P	A3T 7 100P	A3T 7 127P	3,0 x 30
8	A3T 8 50P	A3T 8 89P	A3T 8 100P	A3T 8 127P	3,2 x 30
9	A3T 9 50P	A3T 9 89P	A3T 9 100P	A3T 9 127P	3,2 x 30
10	A3T 10 50P	A3T 10 89P	A3T 10 100P	A3T 10 127P	3,2 x 30
15	A3T 15 50P	A3T 15 89P	A3T 15 100P	A3T 15 127P	3,6
20	A3T 20 50P	A3T 20 89P	A3T 20 100P	A3T 20 127P	4,0
25	A3T 25 50P	A3T 25 89P	A3T 25 100P	A3T 25 127P	5,0

Pontas Phillips encaixe Automático 4 mm



Phillips	Referência	Comprimento	Ø
00	A48 00 50	50	1,8 x 26
0	A48 0 50	50	2,0 x 26
1	A48 1 50	50	3,0 x 26
2	A48 2 50	50	4,0

Pontas Torx encaixe Automático 4 mm



Torx nº	Referência	Comprimento	Ø
1	A4T 1 50	50	1,8 x 26
2	A4T 2 50	50	2,0 x 26
3	A4T 3 50	50	2,2 x 26
4	A4T 4 50	50	2,2 x 26
5	A4T 5 50	50	3,0 x 26
6	A4T 6 50	50	3,0 x 26
7	A4T 7 50	50	3,0 x 26
8	A4T 8 50	50	3,2 x 26
9	A4T 9 50	50	3,2 x 26
10	A4T 10 50	50	3,2 x 26
15	A4T 15 50	50	3,6 x 26
20	A4T 20 50	50	4,0

Pontas Torx plus encaixe Automático 4 mm

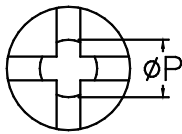


Torx nº	Referência	Comprimento	Ø
3	A4T 3 50P	50	2,2 x 26
4	A4T 4 50P	50	2,2 x 26
5	A4T 5 50P	50	3,0 x 26
6	A4T 6 50P	50	3,0 x 26
7	A4T 7 50P	50	3,0 x 26
8	A4T 8 50P	50	3,2 x 26
9	A4T 9 50P	50	3,2 x 26
10	A4T 10 50P	50	3,2 x 26
15	A4T 15 50P	50	3,6 x 26
20	A4T 20 50P	50	4,0

Pontas Pozidriv

DIN 3126 e 5260

Encaixe tipo "C" - 1/4"



Nº	Comprimento			Ø P
	25	38		
0	C60 0	C60 0 38		1,24
1	C60 1	C60 1 38		1,75
2	C60 2	C60 2 38		2,84
3	C60 3	C60 3 38		4,27

Durezas: "X"- torques baixos - resistência ao desgaste alta.
 "I" - torques médios - resistência ao desgaste média.
 "R"- Torques altos - resistência ao desgaste baixa.

Encaixe tipo "E" - 1/4"



Nº	Comprimento							Ø
	50	75	89	100	150	200	300	
0	E60 0 50	E60 0 75	E60 0 89	E60 0 100				3,0
1	E60 1 50	E60 1 75	E60 1 89	E60 1 100	E60 1 150	E60 1 200	E60 1 300	4,5
2	E60 2 50	E60 2 75	E60 2 89	E60 2 100	E60 2 150	E60 2 200	E60 2 300	6,0
3	E60 3 50	E60 3 75	E60 3 89	E60 3 100	E60 3 150	E60 3 200		8,0
4	E60 4 50	E60 4 75	E60 4 89	E60 4 100				10,0

Durezas: "X"- torques baixos - resistência ao desgaste alta.
 "I" - torques médios - resistência ao desgaste média.
 "R"- Torques altos - resistência ao desgaste baixa.

Phillips



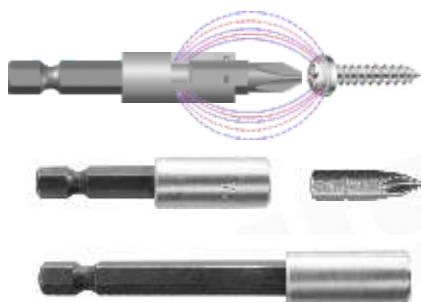
Pozidriv



Suporte magnético para pontas encaixe "C"

para parafusadeira encaixe 1/4"

Para pontas encaixe "C" 1/4" - com imã e anel de retenção
Ø 11 mm.



Comprimento	Referência
50	SM 50
75	SM 75
100	SM 100
150	SM 150
200	SM 200
250	SM 250
300	SM 300
350	SM 350
450	SM 450

Para maior eficiência magnética use somente pontas com 25mm de comprimento.

Suporte magnético para pontas

para parafusadeira encaixe Hios

Para pontas encaixe "C" 1/4" - com imã e anel de retenção
Ø 11 mm.



encaixe H4 x 50 mm - ref.: SMH4 50

encaixe H5 x 55 mm - ref.: SMH5 55

Para maior eficiência magnética use somente pontas com 25mm de comprimento.

Suporte para pontas 1/4"

para parafusadeira encaixe 1/4"

Encaixe sextavado 1/4" - Ø maior 11,5mm
com anel de retenção - não magnético



Use com pontas com encaixe tipo "C".

Comprimento	Referência
50	S 50
75	S 75
100	S 100
150	S 150
200	S 200
250	S 250

Hastes para sistemas automáticos - encaixe "E" para parafusadeira encaixe 1/4"

Haste rosqueada

Utilizada em automação, em sistemas simples ou múltiplos, com sistemas de alimentação do parafuso automática podendo ser de comprimentos diversos e com diferentes rosças.

A vantagem da ponta ser de menor comprimento e mais econômica que a substituição de uma ponta inteiraça.

Podem ser utilizadas pontas allen, phillips, torx, etc.

Para pedidos, devem ser especificadas a rosca, o diâmetro e o comprimento.



Suporte para pontas

Utilizada em casos onde se necessita de um prolongador não magnético para utilização de pontas mais econômicas. Deve-se utilizar com pontas encaixe tipo "C", de qualquer perfil.



Suporte para pontas magnético

Utilizada em casos onde se necessita de um prolongador magnético para utilização de pontas mais econômicas.

Os parafusos ficam presos na extremidade da ponteira, facilitando a montagem em locais de acesso dificultado.

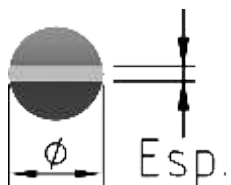
Deve-se utilizar com pontas encaixe tipo "C", de qualquer perfil e de comprimento 25mm.



Pontas Fenda

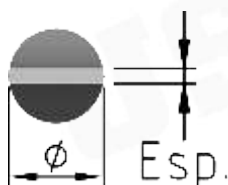
DIN 3127 e 5264

Encaixe tipo "C" - 1/4"



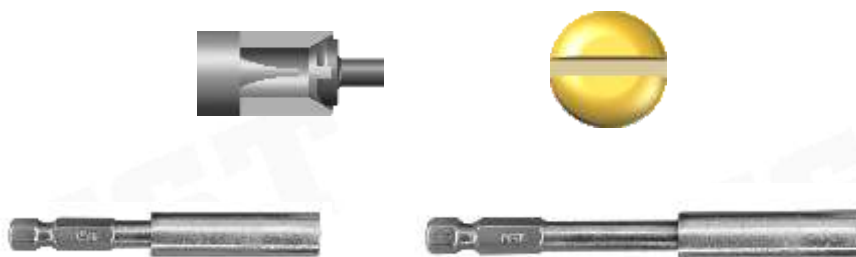
Ø x Esp.	Comprimento	
	25	38
3 X 0,5	C67 3	C67 3 38
4 X 0,7	C67 4	C67 4 38
5 X 0,8	C67 5	C67 5 38
6 X 1,0	C67 6	C67 6 38
7 X 1,1	C67 7	C67 7 38
8 X 1,2	C67 8	C67 8 38
9 X 1,2	C67 9	C67 9 38
10 X 1,4	C67 10	C67 10 38

Encaixe tipo "E" - 1/4"



Ø x Esp.	Comprimento				
	50	75	89	100	150
3 X 0,5	E67 3 50	E67 3 75	E67 3 89	E67 3 100	E67 3 150
4 X 0,7	E67 4 50	E67 4 75	E67 4 89	E67 4 100	E67 4 150
5 X 0,8	E67 5 50	E67 5 75	E67 5 89	E67 5 100	E67 5 150
6 X 1,0	E67 6 50	E27 6 75	E67 6 89	E67 6 100	E67 6 150
7 X 1,1	E67 7 50	E67 7 75	E67 7 89	E67 7 100	E67 7 150
8 X 1,2	E67 8 50	E67 8 75	E67 8 89	E67 8 100	E67 8 150
9 X 1,2	E67 9 50	E67 9 75	E67 9 89	E67 9 100	E67 9 150
10 X 1,4	E67 10 50	E67 10 75	E67 10 89	E67 10 100	

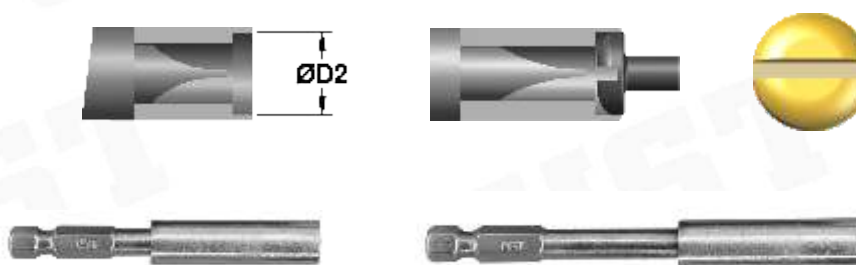
Fenda encaixe tipo “E” 1/4” com guia cônico



Ø x Esp.	Comprimento		
	50 mm	75 mm	89 mm
4 X 0,7	E67C 4 50	E67C 4 75	E67C 4 89
5 X 0,8	E67C 5 50	E67C 5 75	E67C 5 89
6 X 1,0	E67C 6 50	E67C 6 75	E67C 6 89
7 X 1,1	E67C 7 50	E67C 7 75	E67C 7 89
8 X 1,2	E67C 8 50	E67C 8 75	E67C 8 89
9 X 1,2	-	E67C 9 75	E67C 9 89
10 X 1,4	-	E67C 10 75	E67C 10 89

O parafuso deve ficar no alojamento cônico da guia.
Comprimento 75 e 89 mm.
Fabricamos em outras medidas e comprimentos conforme solicitação.

Fenda encaixe tipo “E” 1/4” com guia cilíndrico



Ø x Esp.	Comprimento		Ø D 2
	75 mm	89 mm	
4 X 0,7	E67CC 4 75	E67CC 4 89	4,5
5 X 0,8	E67CC 5 75	E67CC 5 89	6,0
6 X 1,0	E67CC 6 75	E67CC 6 89	7,0
7 X 1,1	E67CC 7 75	E67CC 7 89	8,0
8 X 1,2	E67CC 8 75	E67CC 8 89	9,0
9 X 1,2	E67CC 9 75	E67CC 9 89	10,5
10 X 1,4	E67CC 10 75	E67CC 10 89	11,5

Pontas Allen

DIN 3126 e 7426



Encaixe tipo "C" - 1/4"

Comprimento 25 e 33 mm.



Allen	Compr. 25mm	Compr. 33mm	Torque N.m
1	C66 1	C66 1 33	0,1
1.5	C66 1.5	C66 1.5 33	0,3
2	C66 2	C66 2 33	0,7
2.5	C66 2.5	C66 2.5 33	1,3
3	C66 3	C66 3 33	2,4
4	C66 4	C66 4 33	5,6
5	C66 5	C66 5 33	11,0
6	C66 6	C66 6 33	19,1
7	C66 7	C66 7 33	23,2**
8	C66 8	C66 8 33	23,2**
10	C66 10	C66 10 33	23,2**
1/8"	C66 1/8	C66 1/8 33	2,8
5/32"	C66 5/32	C66 5/32 33	5,5
3/16"	C66 3/16	C66 3/16 33	9,8
1/4"	C66 1/4	C66 1/4 33	22,7
5/16"	C66 5/16	C66 5/16 33	23,2**
3/8"	C66 3/8	C66 3/8 33	23,2**

**Torque limitado ao suportado pelo encaixe 1/4"

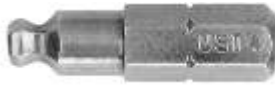
Encaixe tipo "E" - 1/4"



Allen	Comprimento					Ø Corpo
	50	75	89	100	150	
1	E66 1 50					2,0
2	E66 2 50					2,7
2,5	E66 2.5 50	E66 2.5 75				3,2
3	E66 3 50	E66 3 75	E66 3 89	E66 3 100	E66 3 150	4,0
4	E66 4 50	E66 4 75	E66 4 89	E66 4 100	E66 4 150	5,0
5	E66 5 50	E66 5 75	E66 5 89	E66 5 100	E66 5 150	6,0
6	E66 6 50	E66 6 75	E66 6 89	E66 6 100	E66 6 150	S 1/4
7	E66 7 50	E66 7 75	E66 7 89	E66 7 100	E66 7 150	8,0
8	E66 8 50	E66 8 75	E66 8 89	E66 8 100	E66 8 150	S 8,0
9	E66 9 50	E66 9 75	E66 9 89	E66 9 100	E66 9 150	11,0
10	E66 10 50	E66 10 75	E66 10 89	E66 10 100	E66 10 150	12,0
1/8"	E66 1/8 50	E66 1/8 75	E66 1/8 89	E66 1/8 100	E66 1/8 150	4,0
5/32"	E66 5/32 50	E66 5/32 75	E66 5/32 89	E66 5/32 100	E66 5/32 150	4,5
3/16"	E66 3/16 50	E66 3/16 75	E66 3/16 89	E66 3/16 100	E66 3/16 150	6,0
1/4"	E66 1/4 50	E66 1/4 75	E66 1/4 89	E66 1/4 100	E66 1/4 150	S 1/4
5/16"	E66 5/16 50	E66 5/16 75	E66 5/16 89	E66 5/16 100	E66 5/16 150	S 5/16
3/8"	E66 3/8 50	E66 3/8 75	E66 3/8 89	E66 3/8 100	E66 3/8 150	10,0

Pontas Allen Abaulada

Encaixe tipo "C" - 1/4"



Encaixe tipo "E" - 1/4"

Comprimento 25 mm.

Allen	Referência	Torque N.m
3	C66 3 AB	1,8
4	C66 4 AB	4,4
5	C66 5 AB	8,6
6	C66 6 AB	14,9
7	C66 7 AB	23,2**
8	C66 8 AB	23,2**
10	C66 10 AB	23,2**
1/8"	C66 1/8 AB	2,2
5/32"	C66 5/32 AB	4,3
3/16"	C66 3/16 AB	7,6
1/4"	C66 1/4 AB	17,7
5/16"	C66 5/16 AB	23,2**
3/8"	C66 3/8 AB	23,2**

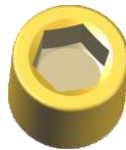
Comprimento

Allen	Comprimento			
	50	75	89	100
3	E66 3 50 AB	E66 3 75 AB	E66 3 89 AB	E66 3 100 AB
4	E66 4 50 AB	E66 4 75 AB	E66 4 89 AB	E66 4 100 AB
5	E66 5 50 AB	E66 5 75 AB	E66 5 89 AB	E66 5 100 AB
6	E66 6 50 AB	E66 6 75 AB	E66 6 89 AB	E66 6 100 AB
7	E66 7 50 AB	E66 7 75 AB	E66 7 89 AB	E66 7 100 AB
8	E66 8 50 AB	E66 8 75 AB	E66 8 89 AB	E66 8 100 AB
9	E66 9 50 AB	E66 9 75 AB	E66 9 89 AB	E66 9 100 AB
10	E66 10 50 AB	E66 10 75 AB	E66 10 89 AB	E66 10 100 AB
1/8"	E66 1/8 50 AB	E66 1/8 75 AB	E66 1/8 89 AB	E66 1/8 100 AB
5/32"	E66 5/32 50 AB	E66 5/32 75 AB	E66 5/32 89 AB	E66 5/32 100 AB
3/16"	E66 3/16 50 AB	E66 3/16 75 AB	E66 3/16 89 AB	E66 3/16 100 AB
1/4"	E66 1/4 50 AB	E66 1/4 75 AB	E66 1/4 89 AB	E66 1/4 100 AB
5/16"	E66 5/16 50 AB	E66 5/16 75 AB	E66 5/16 89 AB	E66 5/16 100 AB
3/8"	E66 3/8 50 AB	E66 3/8 75 AB	E66 3/8 89 AB	E66 3/8 100 AB

**Torque limitado ao suportado pelo encaixe 1/4"

Pontas Allen

Encaixe tipo "C" - 5/16"



Comprimento 32 mm.

Allen	Referência
4	C86 4
5	C86 5
6	C86 6
7	C86 7
8	C86 8
10	C86 10
5/32"	C86 5/32
3/16"	C86 3/16
1/4"	C86 1/4
5/16"	C86 5/16
3/8"	C86 3/8

Comprimento 50 mm.

Allen	Referência	Torque N.m
5	C116 5	11,0
6	C116 6	19,1
7	C116 7	30,4
8	C116 8	45,4
10	C116 10	88,7
11	C116 11	118,0
12	C116 12	121,3**
14	C116 14	121,3**
17	C116 17	121,3**
1/4"	C116 1/4	22,7
5/16"	C116 5/16	44,7
3/8"	C116 3/8	76,5
7/16"	C116 7/16	121,3**
1/2"	C116 1/2	121,3**
9/16"	C116 9/16	121,3**

**Torque limitado ao suportado pelo encaixe 7/16"

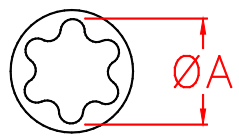
Pontas Torx

Encaixe tipo "C" - 1/4"



Comprimento 25 mm

Torx nº	Ref.	Ø A (mm)
2	C6T 2	0,96
3	C6T 3	1,15
4	C6T 4	1,31
5	C6T 5	1,43
6	C6T 6	1,67
7	C6T 7	1,95
8	C6T 8	2,28
9	C6T 9	2,46
10	C6T 10	2,71
15	C6T 15	3,25
20	C6T 20	3,83
25	C6T 25	4,38
27	C6T 27	4,95
30	C6T 30	5,48
40	C6T 40	6,60
45	C6T 45	7,77
50	C6T 50	8,78



Encaixe tipo "C" - 1/4"

Com furo guia



Comprimento 25 mm

Torx nº	Ref.
8	C6T 8F
9	C6T 9F
10	C6T 10F
15	C6T 15F
20	C6T 20F
25	C6T 25F
27	C6T 27F
30	C6T 30F
40	C6T 40F

Torx

Torx plus



Com suporte magnético usar pontas com 25 mm de comprimento.

Encaixe tipo "E" - 1/4"



Torx nº	Comprimento					Ø corpo
	50	75	89	100	150	
2	E6T 2 50					2,4
3	E6T 3 50					2,4
4	E6T 4 50					2,4
5	E6T 5 50	E6T 5 75				3,0
6	E6T 6 50	E6T 6 75	E6T 6 89	E6T 6 100	E6T 6 150	3,2
7	E6T 7 50	E6T 7 75	E6T 7 89	E6T 7 100	E6T 7 150	3,3
8	E6T 8 50	E6T 8 75	E6T 8 89	E6T 8 100	E6T 8 150	3,3
9	E6T 9 50	E6T 9 75	E6T 9 89	E6T 9 100	E6T 9 150	3,3
10	E6T 10 50	E6T 10 75	E6T 10 89	E6T 10 100	E6T 10 150	3,3
15	E6T 15 50	E6T 15 75	E6T 15 89	E6T 15 100	E6T 15 150	4,0
20	E6T 20 50	E6T 20 75	E6T 20 89	E6T 20 100	E6T 20 150	5,0
25	E6T 25 50	E6T 25 75	E6T 25 89	E6T 25 100	E6T 25 150	5,5
27	E6T 27 50	E6T 27 75	E6T 27 89	E6T 27 100	E6T 27 150	6,0
30	E6T 30 50	E6T 30 75	E6T 30 89	E6T 30 100	E6T 30 150	6,2
40	E6T 40 50	E6T 40 75	E6T 40 89	E6T 40 100	E6T 40 150	--

A marca Torx e Torx Plus são marcas registradas de Acument Intellectual Properties.

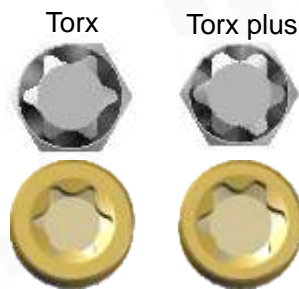
Pontas Torx

Encaixe "E" - 1/4"

Com furo guia



Torx nº	Comprimento				
	50	75	89	100	150
8	E6T 8 50F	E6T 8 75F			
9	E6T 9 50F	E6T 9 75F			
10	E6T 10 50F	E6T 10 75F	E6T 10 89F	E6T 10 100F	E6T 10 150F
15	E6T 15 50F	E6T 15 75F	E6T 15 89F	E6T 15 100F	E6T 15 150F
20	E6T 20 50F	E6T 20 75F	E6T 20 89F	E6T 20 100F	E6T 20 150F
25	E6T 25 50F	E6T 25 75F	E6T 25 89F	E6T 25 100F	E6T 25 150F
27	E6T 27 50F	E6T 27 75F	E6T 27 89F	E6T 27 100F	E6T 27 150F
30	E6T 30 50F	E6T 30 75F	E6T 30 89F	E6T 30 100F	E6T 30 150F
40	E6T 40 50F	E6T 40 75F	E6T 40 89F	E6T 40 100F	E6T 40 150F



Encaixe "C" - 5/16"

DIN 3126



Comprimento 32 mm

Torx nº	Referência
30	C8T 30
40	C8T 40
45	C8T 45
50	C8T 50
55	C8T 55
60	C8T 60

Ponta Torx com rosca

Comprimento 30 mm



Torx nº	M 4	M 5	Ø
6	RX4 6	RX5 6	3,2
7	RX4 7	RX5 7	3,3
8	RX4 8	RX5 8	3,3
9	RX4 9	RX5 9	3,3
10	RX4 10	RX5 10	3,3
15	RX4 15	RX5 15	4,0
20	RX4 20	RX5 20	5,0
25	RX4 25	RX5 25	5,5
27	RX4 27	RX5 27	6,0
30	RX4 30	RX5 30	6,0

Ponta Torx plus com rosca

Comprimento 30 mm



Torx nº	M 4	M 5	Ø
6	RX4 6P	RX5 6P	3,2
7	RX4 7P	RX5 7P	3,3
8	RX4 8P	RX5 8P	3,3
9	RX4 9P	RX5 9P	3,3
10	RX4 10P	RX5 10P	3,3
15	RX4 15P	RX5 15P	4,0
20	RX4 20P	RX5 20P	5,0
25	RX4 25P	RX5 25P	5,5
27	RX4 27P	RX5 27P	6,0
30	RX4 30P	RX5 30P	6,0

Ponta Pentalobular

Encaixe "C" - 1/4"

Com furo guia



Torx nº	Ref.
10	C6T5D 10
15	C6T5D 15
20	C6T5D 20
25	C6T5D 25
27	C6T5D 27
30	C6T5D 30
40	C6T5D 40
45	C6T5D 45



Encaixe "E" - 1/4"

Com furo guia



Torx nº	Comprimento			
	50	75	89	100
10	E6T5D 10 50	E6T5D 10 75	E6T5D 10 89	E6T5D 10 100
15	E6T5D 15 50	E6T5D 15 75	E6T5D 15 89	E6T5D 15 100
20	E6T5D 20 50	E6T5D 20 75	E6T5D 20 89	E6T5D 20 100
25	E6T5D 25 50	E6T5D 25 75	E6T5D 25 89	E6T5D 25 100
27	E6T5D 27 50	E6T5D 27 75	E6T5D 27 89	E6T5D 27 100
30	E6T5D 30 50	E6T5D 30 75	E6T5D 30 89	E6T5D 30 100
40	E6T5D 40 50	E6T5D 40 75	E6T5D 40 89	E6T5D 40 100
45	E6T5D 45 50	E6T5D 45 75	E6T5D 45 89	E6T5D 45 100

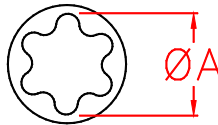
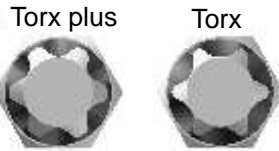
Pontas Torx Plus

Encaixe tipo "C" - 1/4"



Comprimento 25 mm

Torx nº	Ref.	Ø A (mm)
6	C6T 6P	1,67
7	C6T 7P	1,95
8	C6T 8P	2,28
9	C6T 9P	2,46
10	C6T 10P	2,71
15	C6T 15P	3,25
20	C6T 20P	3,83
25	C6T 25P	4,38
27	C6T 27P	4,95
30	C6T 30P	5,48
40	C6T 40P	6,60
45	C6T 45P	7,77



Encaixe tipo "C" - 1/4"

Com furo guia



Comprimento 25 mm

Torx nº	Ref.
8	C6T 8PF
9	C6T 9PF
10	C6T 10PF
15	C6T 15PF
20	C6T 20PF
25	C6T 25PF
27	C6T 27PF
30	C6T 30PF
40	C6T 40PF

Com suporte magnético usar pontas com 25 mm de comprimento.

Encaixe tipo "E" - 1/4"



Torx nº	Comprimento					Ø corpo
	50	75	89	100	150	
6	E6T 6 50P	E6T 6 75P	E6T 6 89P	E6T 6 100P	E6T 6 150P	3,2
7	E6T 7 50P	E6T 7 75P	E6T 7 89P	E6T 7 100P	E6T 7 150P	3,3
8	E6T 8 50P	E6T 8 75P	E6T 8 89P	E6T 8 100P	E6T 8 150P	3,3
9	E6T 9 50P	E6T 9 75P	E6T 9 89P	E6T 9 100P	E6T 9 150P	3,3
10	E6T 10 50P	E6T 10 75P	E6T 10 89P	E6T 10 100P	E6T 10 150P	3,3
15	E6T 15 50P	E6T 15 75P	E6T 15 89P	E6T 15 100P	E6T 15 150P	4,0
20	E6T 20 50P	E6T 20 75P	E6T 20 89P	E6T 20 100P	E6T 20 150P	5,0
25	E6T 25 50P	E6T 25 75P	E6T 25 89P	E6T 25 100P	E6T 25 150P	5,5
27	E6T 27 50P	E6T 27 75P	E6T 27 89P	E6T 27 100P	E6T 27 150P	6,0
30	E6T 30 50P	E6T 30 75P	E6T 30 89P	E6T 30 100P	E6T 30 150P	6,2
40	E6T 40 50P	E6T 40 75P	E6T 40 89P	E6T 40 100P	E6T 40 150P	S 1/4
45	E6T 45 50P	E6T 45 75P	E6T 45 89P	E6T 45 100P	E6T 45 150P	8,0

Pontas Torx Plus

Torx plus

Torx



Encaixe tipo "E" - 1/4" com furo guia



Torx nº	Comprimento						Ø corpo
	50	75	89	100	150		
8	E6T 8 50PF	E6T 8 75PF					3,3
9	E6T 9 50PF	E6T 9 75PF					3,3
10	E6T 10 50PF	E6T 10 75PF	E6T 10 89PF	E6T 10 100PF	E6T 10 150PF		3,3
15	E6T 15 50PF	E6T 15 75PF	E6T 15 89PF	E6T 15 100PF	E6T 15 150PF		4,0
20	E6T 20 50PF	E6T 20 75PF	E6T 20 89PF	E6T 20 100PF	E6T 20 150PF		5,0
25	E6T 25 50PF	E6T 25 75PF	E6T 25 89PF	E6T 25 100PF	E6T 25 150PF		5,5
27	E6T 27 50PF	E6T 27 75PF	E6T 27 89PF	E6T 27 100PF	E6T 27 150PF		6,0
30	E6T 30 50PF	E6T 30 75PF	E6T 30 89PF	E6T 30 100PF	E6T 30 150PF		6,2
40	E6T 40 50PF	E6T 40 75PF	E6T 40 89PF	E6T 40 100PF	E6T 40 150PF		S 1/4
45	E6T 45 50PF	E6T 45 75PF	E6T 45 89PF	E6T45 100PF	E6T 45 150PF		8,0

Pontas Torq-Set

Encaixe tipo "C" - 1/4"



Encaixe tipo "E" - 1/4"



TS	Ref.	Compr.
3	TS 3	25
4	TS 4	25
5	TS 5	25
6	TS 6	25
8	TS 8	25
10	TS 10	25
10A	TS 10A	25
12	TS 12	30

TSE	Compr. 32	Compr. 65
3	TSE 3 32	TSE 3 65
4	TSE 4 32	TSE 4 65
5	TSE 5 32	TSE 5 65
6	TSE 6 32	TSE 6 65
8	TSE 8 32	TSE 8 65
10	TSE 10 32	TSE 10 65
10A	TSE 10A 32	TSE 10A 65

Pontas TriWing



TW	Ref.	Encaixe	Compr.
0	TW 0	1/4	25
1	TW 1	1/4	25
2	TW 2	1/4	25
3	TW 3	1/4	25
4	TW 4	1/4	25
5	TW 5	1/4	25
6	TW 6	1/4	25
7	TW 7	1/4	25
8	TW 8	5/16	30
9	TW 9	5/16	30

Pontas Multidente

DIN 3126



Encaixe tipo "C" - 1/4"



Multidente	Referência	Comprimento
4	C6MD 4	25
5	C6MD 5	25
6	C6MD 6	25
8	C6MD 8	32
10	C6MD 10	32

Encaixe "C" - 5/16"



Multidente	Referência	Comprimento
4	C8MD 4	32
5	C8MD 5	32
6	C8MD 6	32
8	C8MD 8	32
10	C8MD 10	32
12	C8MD 12	32
14	C8MD 14	32

Encaixe tipo "E" - 1/4"



Multidente	Referência	Comprimento
4	E6MD 4 75	75
5	E6MD 5 75	75
6	E6MD 6 75	75
8	E6MD 8 75	75
10	E6MD 10 75	75
12	E6MD 12 75	75

Encaixe "C" - 7/16"



Multidente	Referência	Comprimento
5	C11MD 5	50
6	C11MD 6	50
8	C11MD 8	50
10	C11MD 10	50
12	C11MD 12	50
14	C11MD 14	50



Canhão comum
para parafusos e porcas - sextavado ou estrela



Canhão torx interno



Canhão com imã
uso somente com parafusos



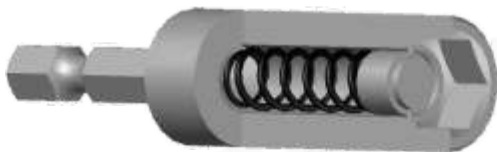
Canhão prisioneiro



Canhão com imã com passagem
uso com porcas



Canhão longo
Comprimentos até 500mm



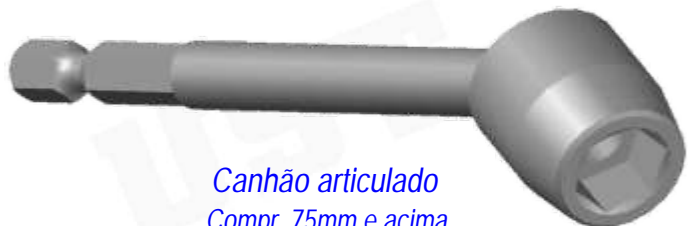
Canhão com imã retrátil
uso com porcas



Canhão para torques mais altos
sextavado de 8 a 15 mm - compr. 75mm e acima



Canhão com retenção por esfera
uso com parafusos e porcas não magnéticos
Sob encomenda



Canhão articulado
Compr. 75mm e acima



Canhão com proteção de nylon deslizante
Sob encomenda

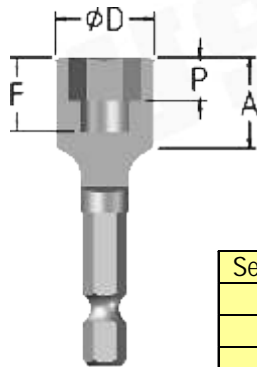


Canhão articulado com mola
Compr. 75mm e acima

Chave Canhão

para parafusadeira encaixe 1/4"

DIN 3126



Utilize com parafusos e porcas



Sextavado	Comprimento					Ø D	P	A	F
	50	75	100	150	200				
4	CC 4 50	CC 4 75	CC 4 100	CC 4 150	CC 4 200	7,0	2,0	-	10
5	CC 5 50	CC 5 75	CC 5 100	CC 5 150	CC 5 200	8,0	3,0	-	10
5,5	CC 5,5 50	CC 5,5 75	CC 5,5 100	CC 5,5 150	CC 5,5 200	9,5	3,0	13	10
6	CC 6 50	CC 6 75	CC 6 100	CC 6 150	CC 6 200	10,0	3,5	13	10
7	CC 7 50	CC 7 75	CC 7 100	CC 7 150	CC 7 200	11,5	4,0	14	11
8	CC 8 50	CC 8 75	CC 8 100	CC 8 150	CC 8 200	12,5	5,0	15	12
9	CC 9 50	CC 9 75	CC 9 100	CC 9 150	CC 9 200	13,7	5,5	16	12
10	CC 10 50	CC 10 75	CC 10 100	CC 10 150	CC 10 200	15,8	6,0	17	13
11	CC 11 50	CC 11 75	CC 11 100	CC 11 150	CC 11 200	16,8	7,0	18	14
12	CC 12 50	CC 12 75	CC 12 100	CC 12 150	CC 12 200	18,5	7,5	19	14
13	CC 13 50	CC 13 75	CC 13 100	CC 13 150	CC 13 200	19,0	8,0	20	15
14	CC 14 50	CC 14 75	CC 14 100	CC 14 150	CC 14 200	20,5	9,0	21	16
3/16"	CC 3/16 50	CC 3/16 75	CC 3/16 100	CC 3/16 150	CC 3/16 200	8,0	3,0	-	10
1/4"	CC 1/4 50	CC 1/4 75	CC 1/4 100	CC 1/4 150	CC 1/4 200	11,5	4,0	13	10
5/16"	CC 5/16 50	CC 5/16 75	CC 5/16 100	CC 5/16 150	CC 5/16 200	12,5	5,0	15	12
3/8"	CC 3/8 50	CC 3/8 75	CC 3/8 100	CC 3/8 150	CC 3/8 200	13,7	6,0	17	13
7/16"	CC 7/16 50	CC 7/16 75	CC 7/16 100	CC 7/16 150	CC 7/16 200	17,0	7,0	18	14
1/2"	CC 1/2 50	CC 1/2 75	CC 1/2 100	CC 1/2 150	CC 1/2 200	18,5	8,0	20	14
9/16"	CC 9/16 50	CC 9/16 75	CC 9/16 100	CC 9/16 150	CC 9/16 200	21,0	9,0	22	16

Fabricamos peças especiais ou com imã conforme solicitação.

Chave Canhão magnético

para parafusadeira encaixe 1/4"

DIN 3126



Utilize somente com parafusos

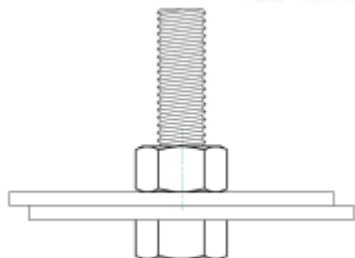


Sextavado	Comprimento					Ø D
	50	75	100	150	200	
4	CC 4 50M	CC 4 75M	CC 4 100M	CC 4 150M	CC 4 200M	7,0
5	CC 5 50M	CC 5 75M	CC 5 100M	CC 5 150M	CC 5 200M	8,0
5,5	CC 5,5 50M	CC 5,5 75M	CC 5,5 100M	CC 5,5 150M	CC 5,5 200M	9,5
6	CC 6 50M	CC 6 75M	CC 6 100M	CC 6 150M	CC 6 200M	10,0
7	CC 7 50M	CC 7 75M	CC 7 100M	CC 7 150M	CC 7 200M	11,5
8	CC 8 50M	CC 8 75M	CC 8 100M	CC 8 150M	CC 8 200M	12,5
9	CC 9 50M	CC 9 75M	CC 9 100M	CC 9 150M	CC 9 200M	13,7
10	CC 10 50M	CC 10 75M	CC 10 100M	CC 10 150M	CC 10 200M	15,8
11	CC 11 50M	CC 11 75M	CC 11 100M	CC 11 150M	CC 11 200M	16,8
12	CC 12 50M	CC 12 75M	CC 12 100M	CC 12 150M	CC 12 200M	18,5
13	CC 13 50M	CC 13 75M	CC 13 100M	CC 13 150M	CC 13 200M	19,0
14	CC 14 50M	CC 14 75M	CC 14 100M	CC 14 150M	CC 14 200M	20,5
3/16"	CC 3/16 50M	CC 3/16 75M	CC 3/16 100M	CC 3/16 150M	CC 3/16 200M	8,0
1/4"	CC 1/4 50M	CC 1/4 75M	CC 1/4 100M	CC 1/4 150M	CC 1/4 200M	11,5
5/16"	CC 5/16 50M	CC 5/16 75M	CC 5/16 100M	CC 5/16 150M	CC 5/16 200M	12,5
3/8"	CC 3/8 50M	CC 3/8 75M	CC 3/8 100M	CC 3/8 150M	CC 3/8 200M	13,7
7/16"	CC 7/16 50M	CC 7/16 75M	CC 7/16 100M	CC 7/16 150M	CC 7/16 200M	17,0
1/2"	CC 1/2 50M	CC 1/2 75M	CC 1/2 100M	CC 1/2 150M	CC 1/2 200M	18,5
9/16"	CC 9/16 50M	CC 9/16 75M	CC 9/16 100M	CC 9/16 150M	CC 9/16 200M	21,0

Chave Canhão magnético com passagem do parafuso



para parafusadeira encaixe 1/4"
DIN 3126

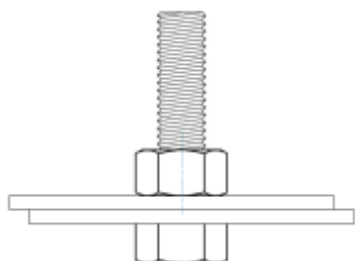


Para aplicações onde existe o excesso de parafuso ou prisioneiro.
Tem a vantagem de não possuir elementos móveis, tem furo com passagem livre.

S	P	Ø D	Compr. 50 mm	Compr. 75 mm	Compr. 100 mm	Compr. 150 mm
			Furo 18 mm	Furo 40 mm	Furo 65 mm	Furo 100 mm
5,5	4	10,5	CC5,550ML	CC5,575ML	CC5,5100ML	CC5,5150ML
6	4	11,0	CC650ML	CC675ML	CC6100ML	CC6150ML
7	4	12,5	CC750ML	CC775ML	CC7100ML	CC7150ML
8	5	13,5	CC850ML	CC875ML	CC8100ML	CC8150ML
9	5,5	15,0	CC950ML	CC975ML	CC9100ML	CC9150ML
10	6	15,8	CC1050ML	CC1075ML	CC10100ML	CC10150ML
11	7	17,0	CC1150ML	CC1175ML	CC11100ML	CC11150ML
12	7,5	18,8	CC1250ML	CC1275ML	CC12100ML	CC12150ML
13	8	19,0	CC1350ML	CC1375ML	CC13100ML	CC13150ML
7/32"	4	10,5	CC7/3250ML	CC7/3275ML	CC7/32100ML	CC7/32150ML
1/4"	4	12,5	CC1/450ML	CC1/475ML	CC1/4100ML	CC1/4150ML
9/32"	4	12,8	CC9/3250ML	CC9/3275ML	CC9/32100ML	CC9/32150ML
5/16"	5	13,5	CC5/1650ML	CC5/1675ML	CC5/16100ML	CC5/16150ML
3/8"	6	15,8	CC3/850ML	CC3/875ML	CC3/8100ML	CC3/8150ML
7/16"	7	19,0	CC7/1650ML	CC7/1675ML	CC7/16100ML	CC7/16150ML
1/2"	8	19,0	CC1/250ML	CC1/275ML	CC1/2100ML	CC1/2150ML

Chave Canhão magnético com ímã retrátil

para parafusadeira encaixe 1/4"
DIN 3126



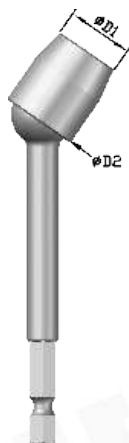
S	P	Ø D	Compr. 75 mm	Compr. 100 mm	Compr. 150 mm
			Passagem 25 mm	Passagem 50 mm	Passagem 50 mm
7	4	11,5	CC775MR	CC7100MR	CC7150MR
8	5	12,5	CC875MR	CC8100MR	CC8150MR
9	5,5	13,7	CC975MR	CC9100MR	CC9150MR
10	6	15,8	CC1075MR	CC10100MR	CC10150MR
11	7	16,8	CC1175MR	CC11100MR	CC11150MR
12	7,5	18,5	CC1275MR	CC12100MR	CC12150MR
13	8	19,0	CC1375MR	CC13100MR	CC13150MR
9/32"	4	11,5	CC9/3275MR	CC9/32100MR	CC9/32150MR
5/16"	5	12,5	CC5/1675MR	CC5/16100MR	CC5/16150MR
3/8"	6	15,8	CC3/875MR	CC3/8100MR	CC3/8150MR
7/16"	7	17,0	CC7/1675MR	CC7/16100MR	CC7/16150MR
1/2"	8	18,5	CC1/275MR	CC1/2100MR	CC1/2150MR

Chave Canhão Articulado



para parafusadeira encaixe 1/4"

DIN 3126



Sextavado	Comprimento				Ø D1	Ø D2
	75	100	150	200		
6	CA 6 75	CA 6 100	CA 6 150	CA 6 200	10,0	16,0
7	CA 7 75	CA 7 100	CA 7 150	CA 7 200	11,5	16,0
8	CA 8 75	CA 8 100	CA 8 150	CA 8 200	12,5	16,0
9	CA 9 75	CA 9 100	CA 9 150	CA 9 200	13,5	19,0
10	CA 10 75	CA 10 100	CA 10 150	CA 10 200	16,0	19,0
11	CA 11 75	CA 11 100	CA 11 150	CA 11 200	17,0	19,0
12	CA 12 75	CA 12 100	CA 12 150	CA 12 200	18,5	19,0
13	CA 13 75	CA 13 100	CA 13 150	CA 13 200	19,0	19,0
1/4"	CA 1/4 75	CA 1/4 100	CA 1/4 150	CA 1/4 200	11,0	16,0
5/16"	CA 5/16 75	CA 5/16 100	CA 5/16 150	CA 5/16 200	12,5	16,0
3/8"	CA 3/8 75	CA 3/8 100	CA 3/8 150	CA 3/8 200	15,5	19,0
7/16"	CA 7/16 75	CA 7/16 100	CA 7/16 150	CA 7/16 200	17,0	19,0
1/2"	CA 1/2 75	CA 1/2 100	CA 1/2 150	CA 1/2 200	19,0	19,0

Canhões articulados não devem ser usados em máquinas de impacto.

Ângulo máximo de operação: 30°.

Chave Canhão Articulado com mola interna

Possui mola interna para posicionamento da parte móvel

para parafusadeira encaixe 1/4"



Sextavado	Comprimento				Ø D1	Ø D2
	80	105	155	205		
6	CAMI 6 80	CAMI 6 105	CAMI 6 155	CAMI 6 205	10,0	16,0
7	CAMI 7 80	CAMI 7 105	CAMI 7 155	CAMI 7 205	11,5	16,0
8	CAMI 8 80	CAMI 8 105	CAMI 8 155	CAMI 8 205	12,5	16,0
9	CAMI 9 80	CAMI 9 105	CAMI 9 155	CAMI 9 205	13,5	19,0
10	CAMI 10 80	CAMI 10 105	CAMI 10 155	CAMI 10 205	16,0	19,0
11	CAMI 11 80	CAMI 11 105	CAMI 11 155	CAMI 11 205	17,0	19,0
12	CAMI 12 80	CAMI 12 105	CAMI 12 155	CAMI 12 205	18,5	19,0
13	CAMI 13 80	CAMI 13 105	CAMI 13 155	CAMI 13 205	19,0	19,0
1/4"	CAMI 1/4 80	CAMI 1/4 105	CAMI 1/4 155	CAMI 1/4 205	11,0	16,0
5/16"	CAMI 5/16 80	CAMI 5/16 105	CAMI 5/16 155	CAMI 5/16 205	12,5	16,0
3/8"	CAMI 3/8 80	CAMI 3/8 105	CAMI 3/8 155	CAMI 3/8 205	15,5	19,0
7/16"	CAMI 7/16 80	CAMI 7/16 105	CAMI 7/16 155	CAMI 7/16 205	17,0	19,0
1/2"	CAMI 1/2 80	CAMI 1/2 105	CAMI 1/2 155	CAMI 1/2 205	19,0	19,0

Fabricamos com medidas especiais e com imã.

Canhões articulados não devem ser usados em máquinas de impacto.

Ângulo máximo de operação: 30°.

Chave Canhão Articulado com mola

Possui mola externa para posicionamento da parte móvel
para parafusadeira encaixe 1/4"



Sextavado	Comprimento				Ø D1	Ø D2
	75	100	150	200		
6	CAM 6 75	CAM 6 100	CAM 6 150	CAM 6 200	10,0	16,0
7	CAM 7 75	CAM 7 100	CAM 7 150	CAM 7 200	11,5	16,0
8	CAM 8 75	CAM 8 100	CAM 8 150	CAM 8 200	12,5	16,0
9	CAM 9 75	CAM 9 100	CAM 9 150	CAM 9 200	13,5	19,0
10	CAM 10 75	CAM 10 100	CAM 10 150	CAM 10 200	16,0	19,0
11	CAM 11 75	CAM 11 100	CAM 11 150	CAM 11 200	17,0	19,0
12	CAM 12 75	CAM 12 100	CAM 12 150	CAM 12 200	18,5	19,0
13	CAM 13 75	CAM 13 100	CAM 13 150	CAM 13 200	19,0	19,0
1/4"	CAM 1/4 75	CAM 1/4 100	CAM 1/4 150	CAM 1/4 200	11,0	16,0
5/16"	CAM 5/16 75	CAM 5/16 100	CAM 5/16 150	CAM 5/16 200	12,5	16,0
3/8"	CAM 3/8 75	CAM 3/8 100	CAM 3/8 150	CAM 3/8 200	15,5	19,0
7/16"	CAM 7/16 75	CAM 7/16 100	CAM 7/16 150	CAM 7/16 200	17,0	19,0
1/2"	CAM 1/2 75	CAM 1/2 100	CAM 1/2 150	CAM 1/2 200	19,0	19,0

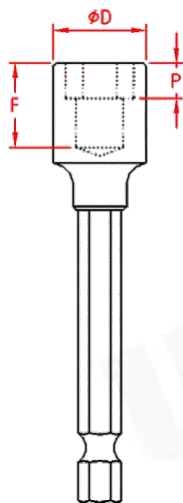
Fabricamos com medidas especiais e com imã - com ou sem mola.
Canhões articulados não devem ser usados em máquinas de impacto.

Chave Canhão alto torque



Possui haste toda sextavada 1/4"

Suporta torques maiores que os canhões inteiriços
O valor do torque depende das condições de utilização.



Sextavado	Comprimento				Ø D	P	F
	75	100	150	200			
8	CCH 8 75	CCH 8 100	CCH 8 150	CCH 8 200	12,5	5,0	15
9	CCH 9 75	CCH 9 100	CCH 9 150	CCH 9 200	13,7	5,5	15
10	CCH 10 75	CCH 10 100	CCH 10 150	CCH 10 200	15,8	6,0	15
11	CCH 11 75	CCH 11 100	CCH 11 150	CCH 11 200	16,8	7,0	15
12	CCH 12 75	CCH 12 100	CCH 12 150	CCH 12 200	18,5	7,5	15
13	CCH 13 75	CCH 13 100	CCH 13 150	CCH 13 200	19,0	8,0	17
14	CCH 14 75	CCH 14 100	CCH 14 150	CCH 14 200	20,5	9,0	17
15	CCH 15 75	CCH 15 100	CCH 15 150	CCH 15 200	21,0	9,0	17
5/16"	CCH 5/16 75	CCH 5/16 100	CCH 5/16 150	CCH 5/16 200	12,5	5,0	15
3/8"	CCH 3/8 75	CCH 3/8 100	CCH 3/8 150	CCH 3/8 200	13,7	6,0	15
7/16"	CCH 7/16 75	CCH 7/16 100	CCH 7/16 150	CCH 7/16 200	17,0	7,0	15
1/2"	CCH 1/2 75	CCH 1/2 100	CCH 1/2 150	CCH 1/2 200	18,5	8,0	17
9/16"	CCH 9/16 75	CCH 9/16 100	CCH 9/16 150	CCH 9/16 200	21,0	9,0	17

Adaptador para pontas magnético



Utilize pontas encaixe "C"

Encaixe □	Referência	Comprimento
1/4"	APM 1 1/4	44 mm
3/8"	APM 2 1/4	44 mm
1/2"	APM 3 1/4	57 mm

Para pontas encaixe "C" 1/4".

Use somente com pontas comprimento 25 mm.

Adaptador para Pontas

Soquete porta bit - DIN 7427

Com parafuso de fixação



Utilize pontas com mosca



Enc. □	Encaixe ponta	Referência	Comprim.	Ø D
1/4"	1/4"	AP 1 1/4 A	25	15,5
3/8"	1/4"	AP 2 1/4 A	31	18,5
	5/16"	AP 2 5/16 A	34	18,5
	7/16"	AP 2 7/16 A	34	21,5
1/2"	1/4"	AP 3 1/4 A	38	18,5
	5/16"	AP 3 5/16 A	38	18,5
	7/16"	AP 3 7/16 A	38	25,0

Adaptador para Pontas

Soquete porta bit

Com anel elástico para fixação



Utilize pontas encaixe "C"



Enc. □	Encaixe ponta	Referência	Comprim.	Ø D
1/4"	1/4"	AP 1 1/4 B	25	12,0
3/8"	1/4"	AP 2 1/4 B	31	12,0
	5/16"	AP 2 5/16 B	34	15,0
	7/16"	AP 2 7/16 B	38	18,5
1/2"	1/4"	AP 3 1/4 B	38	12,0
	5/16"	AP 3 5/16 B	38	15,0
	7/16"	AP 3 7/16 B	42	20,0

Adaptadores para pontas permitem o uso de pontas com encaixe sextavado em máquinas com encaixe quadrado, recomenda-se uma regulagem criteriosa do torque para não abreviar a vida útil das pontas.

Adaptador para Pontas Tipo Engate Rápido

Com esfera de retenção



Utilize pontas encaixe "E"

Para uso com pontas com encaixe máquina - Tipo "E".

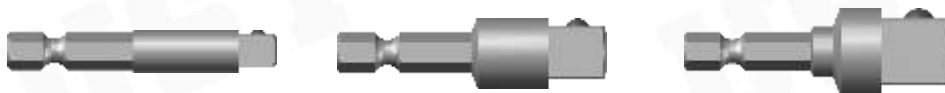
Referência	Quadrado	P/ pontas	Comprimento
ER 1 1/4	1/4"	1/4"	34
ER 2 1/4	3/8"	1/4"	40
ER 3 1/4	1/2"	1/4"	46
ER 3 7/16	1/2"	7/16"	54

Adaptador para Soquetes

Segurador de Soquetes

DIN 7428

Para máquina com encaixe sextavado 1/4"



Soq. □	Comprim.	Com esfera	Com pino
1/4"	50	AS 1 2 E	AS 1 2P
	75	AS 1 3 E	AS 1 3P
	100	AS 1 4 E	AS 1 4P
	150	AS 1 6 E	AS 1 6P
	200	AS 1 8 E	AS 1 8P
	250	AS 1 10 E	AS 1 10P
3/8"	50	AS 2 2E	AS 2 2P
	75	AS 2 3E	AS 2 3P
	100	AS 2 4E	AS 2 4P
1/2"	50	AS 3 2E	AS 3 2P
	75	AS 3 3E	AS 3 3P
	100	AS 3 4E	AS 3 4P

Adaptadores para soquete são para uso eventual - Para uso contínuo recomendamos a substituição da parafusadeira por outra com encaixe quadrado.

Não utilizar com máquina de impacto.

Redução - Adaptador

DIN 3129



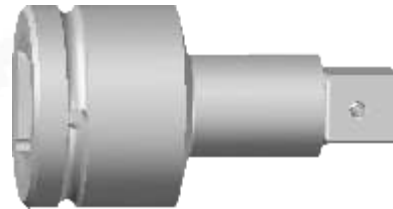
□ Interno	□ Externo	Comprim.	Referência
1/4"	1/4"	25	R 1 1
	3/8"	25	R 1 2
	1/2"	32	R 1 3
3/8"	1/4"	32	R 2 1
	3/8"	34	R 2 2
	1/2"	38	R 2 3
	5/8"	40	R 2 4
1/2"	1/4"	34	R 3 1
	3/8"	40	R 3 2
	1/2"	48	R 3 3
	5/8"	48	R 3 4
	3/4"	55	R 3 5
5/8"	1"	55	R 3 6
	3/8"	45	R 4 2
	1/2"	55	R 4 3
	5/8"	60	R 4 4
3/4"	3/4"	65	R 4 5
	1/2"	55	R 5 3
	5/8"	60	R 5 4
	3/4"	65	R 5 5
1"	1"	70	R 5 6
	1/2"	65	R 6 3
	3/4"	75	R 6 5
	1"	78	R 6 6
1.1/2"	1.1/2"	80	R 6 7
	3/4"	84	R 7 5
	1"	90	R 7 6
2.1/2"	2.1/2"	106	R 7 8
	1.1/2"	125	R 8 7

É importante a regulagem do torque de acordo com a medida do quadrado macho.
As medidas podem sofrer alterações sem prévio aviso.

Extensão



<input type="checkbox"/> Interno	<input type="checkbox"/> Externo	Comprim.	Com esfera	Com pino
1/4"	1/4"	75	EX 1 1 3E	EX 1 1 3P
		100	EX 1 1 4E	EX 1 1 4P
		150	EX 1 1 6E	EX 1 1 6P
3/8"	3/8"	75	EX 2 2 3E	EX 2 2 3P
		100	EX 2 2 4E	EX 2 2 4P
		150	EX 2 2 6E	EX 2 2 6P
		200	EX 2 2 8E	EX 2 2 8P
		300	EX 2 2 12E	EX 2 2 12P
1/2"	1/2"	75	EX 3 2 3E	EX 3 2 3P
		150	EX 3 2 6E	EX 3 2 6P
		250	EX 3 2 10E	EX 3 2 10P
	1/2"	75	EX 3 3 3E	EX13 3 3P
		125	EX 3 3 5E	EX 3 3 5P
		250	EX 3 3 10E	EX 3 3 10P
		300	EX 3 3 12E	EX 3 3 12P
3/4"	1/2"	200	EX 5 3 8E	EX 5 3 8P
		300	EX 5 3 12E	EX 5 3 12P
	3/4"	200	EX5 5 8E	EX5 5 8P
		300	EX 5 5 12E	EX 5 5 12P



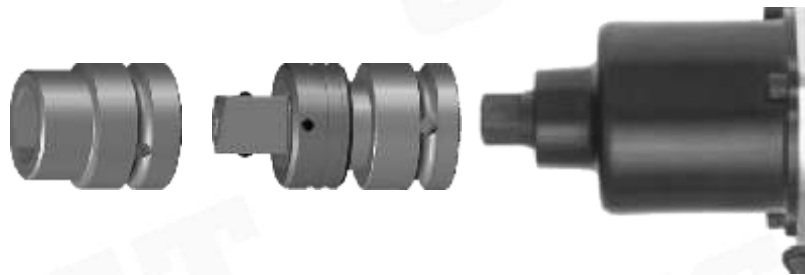
<input type="checkbox"/> Interno	<input type="checkbox"/> Externo	Comprimento	Com esfera	Com furo	
1"	3/4"	100	EX 6 5 4E	EX 6 5 4F	
		150	EX 6 5 6E	EX 6 5 6	
		200	EX 6 5 8E	EX 6 5 8F	
		250	EX 6 5 10E	EX 6 5 10F	
	1"	1"	100	EX 6 6 4E	EX 6 6 4F
			150	EX 6 6 6E	EX 6 6 6F
			200	EX 6 6 8E	EX 6 6 8F
			250	EX 6 6 10E	EX 6 6 10F
1.1/2"	1"	300	EX 6 6 12E	EX 6 6 12F	
		150	EX 7 6 6E	EX 7 6 6F	
	1.1/2"	1.1/2"	200	EX 7 6 8E	EX 7 6 8F
			100	-	EX 7 7 4F
			150	-	EX 7 7 6F
			200	-	EX 7 7 8F
			250	-	EX 7 7 10F
			300	-	EX 7 7 12F

As medidas podem sofrer alterações sem prévio aviso.

Adaptador para soquete - Engate Rápido



□ Fêmea	□ Macho	Comprimento	Referência
3/8"	1/4"	38	ASER 2 1 38
3/8"	1/4"	75	ASER 2 1 75
3/8"	1/2"	60	ASER 2 3 60
3/8"	1/2"	75	ASER 2 3 75
1/2"	3/8"	54	ASER 3 2 54
1/2"	3/8"	75	ASER 3 2 75
1/2"	3/8"	100	ASER 3 2 100
1/2"	3/4"	75	ASER 3 5 75
3/4"	1/2"	70	ASER 5 3 70
3/4"	1/2"	100	ASER 5 3 100
3/4"	1"	95	ASER 5 6 95
1"	3/4"	90	ASER 6 5 90



Extensão - Engate Rápido



□ Fêmea	□ Macho	Comprimento	Referência
3/8"	3/8"	46	EXER 2 46
3/8"	3/8"	75	EXER 2 75
3/8"	3/8"	100	EXER 2 100
1/2"	1/2"	60	EXER 3 60
1/2"	1/2"	100	EXER 3 100
1/2"	1/2"	125	EXER 3 125
3/4"	3/4"	78	EXER 5 78
3/4"	3/4"	100	EXER 5 100
3/4"	3/4"	125	EXER 5 125
1"	1"	100	EXER 6 100
1"	1"	150	EXER 6 150
1"	1"	200	EXER 6 200

As medidas podem sofrer alterações sem prévio aviso.

Extensão Abaulada



Quadrado macho em formato especial - permite uma inclinação de 20°
Com furo oblongo para passagem do pino de segurança

□ Interno	□ externo	Comprim.	Referência
3/8"	3/8"	75	EXE 2 2 75
3/8"	3/8"	100	EXE 2 2 100
3/8"	3/8"	150	EXE 2 2 150
3/8"	1/2"	75	EXE 2 3 75
3/8"	1/2"	100	EXE 2 3 100
1/2"	1/2"	75	EXE 3 3 75
1/2"	1/2"	100	EXE 3 3 100
1/2"	1/2"	150	EXE 3 3 150
1/2"	3/8"	75	EXE 3 2 75
1/2"	3/8"	100	EXE 3 2 100
3/4"	3/4"	100	EXE 5 5 100
3/4"	3/4"	150	EXE 5 5 150
3/4"	3/4"	200	EXE 5 5 200
3/4"	1/2"	100	EXE 5 3 100
3/4"	1/2"	150	EXE 5 3 150
1"	1"	150	EXE 6 6 150
1"	1"	200	EXE 6 6 200
1"	3/4"	150	EXE 6 5 150
1"	3/4"	200	EXE 6 5 200

Soquete Introduzidor de Prisioneiro



□ 3/8"

□ 1/2"

Rosca	Compr.	Ref.	Rosca tipo
5 x 0,8	35	IP 2 5-0,8	Normal
6 X 1,0	35	IP 2 6-1,0	Normal
7 X 1,0	35	IP 2 7-1,0	Normal
8 X 1,25	35	IP 2 8-1,25	Normal
10 x 1,25	45	IP 2 10-1,25	Fina
10 X 1,5	45	IP 2 10-1,5	Normal
12 X 1,25	45	IP 2 12-1,25	Fina
12 X 1,5	45	IP 2 12-1,5	Fina
12 X 1,75	45	IP 2 12-1,75	Normal
14 X 1,5	45	IP 2 14-1,5	Fina
14 X 2,0	45	IP 2 14-2,0	Normal
16 X 12,0	50	IP 2 16-2,0	Normal

Rosca	Compr.	Ref.	Rosca tipo
5 x 0,8	38	IP 3 5-0,8	Normal
6 X 1,0	38	IP 3 6-1,0	Normal
7 X 1,0	38	IP 3 7-1,0	Normal
8 X 1,25	45	IP 3 8-1,25	Normal
10 X 1,25	45	IP 3 10 -1,25	Fina
10 X 1,5	45	IP 3 10-1,5	Normal
12 X 1,25	45	IP 3 12-1,25	Fina
12 X 1,5	45	IP 3 12-1,5	Fina
12 X 1,75	45	IP 3 12-1,75	Normal
14 X 1,5	50	IP 3 14-1,5	Fina
14 X 2,0	50	IP 3 14-2,0	Normal
16 X 2,0	50	IP 3 16-2,0	Normal

Batente com esfera fixa no fundo da rosca ou com parafuso limitador sob encomenda , que permite a regulagem do comprimento da rosca.

Fabricamos peças em polegada e especiais sob encomenda.

Junta Universal



□ Fêmea	□ Macho	Compr.	Com esfera	Com pino
1/4"	1/4"	42	JU 1 1 E	JU 1 1 P
3/8"	1/4"	50	JU 2 1 E	JU 2 1 P
3/8"	3/8"	53	JU 2 2 E	JU 2 2 P
3/8"	1/2"	54	JU 2 3 E	JU 2 3 P
1/2"	3/8"	64	JU 3 2 E	JU 3 2 P
1/2"	1/2"	72	JU 3 3 E	JU 3 3 P
1/2"	5/8"	79	JU 3 4 E	JU 3 4 P
1/2"	3/4"	85	JU 3 5 E	JU 3 5 P
5/8"	1/2"	70	JU 4 3 E	JU 4 3 P
5/8"	5/8"	75	JU 4 4 E	JU 4 4 P
5/8"	3/4"	85	JU 4 5 E	JU 4 5 P
3/4"	1/2"	75	JU 5 3 E	JU 5 3 P
3/4"	3/4"	80	JU 5 5 E	JU 5 5 P
3/4"	1"	85	JU 5 6 E	JU 5 6 P
1"	3/4"	90	JU 6 5 E	JU 6 5 P
1"	1"	95	JU 6 6 E	JU 6 6 P
1.1/2"	1.1/2"	157	JU 7 7 furo	

Comprimentos longos: 100,150,200 e 250 mm.

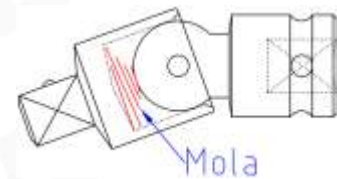
Não utilizar com máquina de impacto.

Ângulo máximo de operação = 30°.

As medidas podem sofrer alterações sem prévio aviso.

Junta Universal com mola interna

O sistema de mola possibilita o posicionamento da parte móvel na aplicação.



□ Fêmea	□ Macho	Compr.	Com esfera	Com pino
1/4"	1/4"	46	JUMI 1 1 E	JUMI 1 1 P
3/8"	1/4"	55	JUMI 2 1 E	JUMI 2 1 P
3/8"	3/8"	58	JUMI 2 2 E	JUMI 2 2 P
3/8"	1/2"	58	JUMI 2 3 E	JUMI 2 3 P
1/2"	3/8"	69	JUMI 3 2 E	JUMI 3 2 P
1/2"	1/2"	78	JUMI 3 3 E	JUMI 3 3 P
1/2"	5/8"	85	JUMI 3 4 E	JUMI 3 4 P
1/2"	3/4"	91	JUMI 3 5 E	JUMI 3 5 P

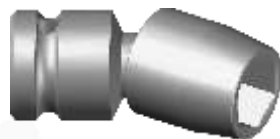
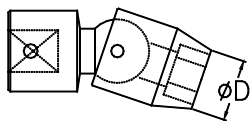
Não utilizar com máquina de impacto.

Ângulo máximo de operação = 30°.

As medidas podem sofrer alterações sem prévio aviso.

Comprimentos longos: 105,155,205 e 255 mm.

Soquete Articulado



□ 3/8"

Comprimento 55 mm.

Sextavado mm	Ref.	Sextavado Pol.	Ref.	Ø D
8	A 2 8	5/16"	A 2 5/16	13,0
10	A 2 10	3/8"	A 2 3/8	15,5
11	A 2 11	7/16"	A 2 7/16	16,0
12	A 2 12	---	---	17,5
13	A 2 13	1/2"	A 2 1/2	18,0
14	A 2 14	9/16"	A 2 9/16	19,0
15	A 2 15	---	---	20,0
16	A 2 16	5/8"	A 2 5/8	23,0
17	A 2 17	11/16"	A 2 11/16	25,0
18	A 2 18	---	---	27,0
19	A 2 19	3/4	A 2 3/4	28,0



Ângulo máximo de operação = 30°.
Comprimentos longos: 100,150,200 e 250 mm.
Fabricamos peças especiais.

□ 1/2"

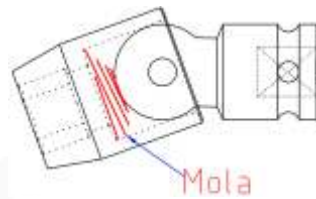
Sextavado mm	Ref.	Sextavado Pol.	Ref.	Compr.	Ø D
8	A 3 8	5/16"	A 3 5/16	65	13,0
10	A 3 10	3/8"	A 3 3/8	65	16,0
11	A 3 11	7/16"	A 3 7/16	65	17,0
12	A 3 12	---	---	65	17,0
13	A 3 13	1/2"	A 3 1/2	65	18,0
14	A 3 14	9/16"	A 3 9/16	65	20,0
15	A 3 15	---	---	65	21,0
16	A 3 16	5/8"	A 3 5/8	65	22,0
17	A 3 17	11/16"	A 3 11/16	65	25,0
18	A 3 18	---	---	65	26,0
19	A 3 19	3/4"	A 3 3/4	74	28,0
20	A 3 20	---	---	74	28,0
21	A 3 21	13/16"	A 3 13/16	74	29,0
22	A 3 22	7/8"	A 3 7/8	74	32,0
23	A 3 23	---	---	74	34,0
24	A 3 24	15/16"	A 3 15/16	74	36,0
25	A 3 25	1"	A 3 1	74	40,0

Ângulo máximo de operação = 30°.
Comprimentos longos: 100,150,200 e 250 mm.
Fabricamos peças especiais.

****O uso em máquinas de impacto reduz a vida útil dos soquetes articulados.**
As medidas podem sofrer alterações sem prévio aviso.

Soquete Articulado com mola interna

O sistema de mola possibilita o posicionamento da parte móvel na aplicação.



□ 3/8"

Comprimento 60 mm.



Sextavado mm	Ref.	Sextavado Pol.	Ref.	Ø D
8	AMI 2 8	5/16"	AMI 2 5/16	13,0
10	AMI 2 10	3/8"	AMI 2 3/8	15,5
11	AMI 2 11	7/16"	AMI 2 7/16	16,0
12	AMI 2 12	---	---	17,5
13	AMI 2 13	1/2"	AMI 2 1/2	18,0
14	AMI 2 14	9/16"	AMI 2 9/16	19,0
15	AMI 2 15	---	---	20,0
16	AMI 2 16	5/8"	AMI 2 5/8	23,0
17	AMI 2 17	11/16"	AMI 2 11/16	25,0
18	AMI 2 18	---	---	27,0
19	AMI 2 19	3/4"	AMI 2 3/4	28,0

□ 1/2"



Sextavado mm	Ref.	Sextavado Pol.	Ref.	Compr.	Ø D
8	AMI 3 8	5/16"	AMI 3 5/16	70	13,0
10	AMI 3 10	3/8"	AMI 3 3/8	70	16,0
11	AMI 3 11	7/16"	AMI 3 7/16	70	17,0
12	AMI 3 12	---	---	70	17,0
13	AMI 3 13	1/2"	AMI 3 1/2	70	18,0
14	AMI 3 14	9/16"	AMI 3 9/16	70	20,0
15	AMI 3 15	---	---	70	21,0
16	AMI 3 16	5/8"	AMI 3 5/8	70	22,0
17	AMI 3 17	11/16"	AMI 3 11/16	70	25,0
18	AMI 3 18	---	---	70	26,0
19	AMI 3 19	3/4"	AMI 3 3/4	79	28,0
20	AMI 3 20	---	---	79	28,0
21	AMI 3 21	13/16"	AMI 3 13/16	79	29,0
22	AMI 3 22	7/8"	AMI 3 7/8	79	32,0
23	AMI 3 23	---	---	79	34,0
24	AMI 3 24	15/16"	AMI 3 15/16	79	36,0
25	AMI 3 25	1"	AMI 3 1	79	40,0

Comprimentos longos: 105, 155, 205 e 255 mm.

Ângulo máximo de operação = 30°.

Fabricamos peças especiais.

****O uso em máquinas de impacto reduz a vida útil dos soquetes articulados.**

As medidas podem sofrer alterações sem prévio aviso.



□ 3/8"

Sextavado	Compr. 100mm	Compr. 150mm	Compr. 200mm
8	AM 2 8 100	AM 2 8 150	AM 2 8 200
10	AM 2 10 100	AM 2 10 150	AM 2 10 200
11	AM 2 11 100	AM 2 11 150	AM 2 11 200
12	AM 2 12 100	AM 2 12 150	AM 2 12 200
13	AM 2 13 100	AM 2 13 150	AM 2 13 200
14	AM 2 14 100	AM 2 14 150	AM 2 14 200
15	AM 2 15 100	AM 2 15 150	AM 2 15 200
16	AM 2 16 100	AM 2 16 150	AM 2 16 200
17	AM 2 17 100	AM 2 17 150	AM 2 17 200
18	AM 2 18 100	AM 2 18 150	AM 2 18 200
19	AM 2 19 100	AM 2 19 150	AM 2 19 200
5/16"	AM 2 5/16 100	AM 2 5/16 150	AM 2 5/16 200
3/8"	AM 2 3/8 100	AM 2 3/8 150	AM 2 3/8 200
7/16"	AM 2 7/16 100	AM 2 7/16 150	AM 2 7/16 200
1/2"	AM 2 1/2 100	AM 2 1/2 150	AM 2 1/2 200
9/16"	AM 2 9/16 100	AM 2 9/16 150	AM 2 9/16 200
5/8"	AM 2 5/8 100	AM 2 5/8 150	AM 2 5/8 200
11/16"	AM 2 11/16 100	AM 2 11/16 150	AM 2 11/16 200
3/4"	AM 2 3/4 100	AM 2 3/4 150	AM 2 3/4 200

□ 1/2"

Sextavado	Compr. 100mm	Compr. 150mm	Compr. 200mm
10	AM 3 10 100	AM 3 10 150	AM 3 10 200
11	AM 3 11 100	AM 3 11 150	AM 3 11 200
12	AM 3 12 100	AM 3 12 150	AM 3 12 200
13	AM 3 13 100	AM 3 13 150	AM 3 13 200
14	AM 3 14 100	AM 3 14 150	AM 3 14 200
15	AM 3 15 100	AM 3 15 150	AM 3 15 200
16	AM 3 16 100	AM 3 16 150	AM 3 16 200
17	AM 3 17 100	AM 3 17 150	AM 3 17 200
18	AM 3 18 100	AM 3 18 150	AM 3 18 200
19	AM 3 19 100	AM 3 19 150	AM 3 19 200
20	AM 3 20 100	AM 3 20 150	AM 3 20 200
22	AM 3 22 100	AM 3 22 150	AM 3 22 200
3/8"	AM 3 3/8 100	AM 3 3/8 150	AM 3 3/8 200
7/16"	AM 3 7/16 100	AM 3 7/16 150	AM 3 7/16 200
1/2"	AM 3 1/2 100	AM 3 1/2 150	AM 3 1/2 200
9/16"	AM 3 9/16 100	AM 3 9/16 150	AM 3 9/16 200
5/8"	AM 3 5/8 100	AM 3 5/8 150	AM 3 5/8 200
11/16"	AM 3 11/16 100	AM 3 11/16 150	AM 3 11/16 200
3/4"	AM 3 3/4 100	AM 3 3/4 150	AM 3 3/4 200
13/16"	AM 3 13/16 100	AM 3 13/16 150	AM 3 13/16 200
7/8"	AM 3 7/8 100	AM 3 7/8 150	AM 3 7/8 200

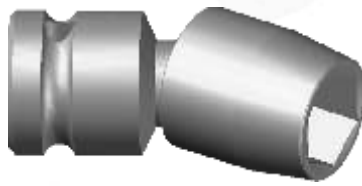
Ângulo máximo de operação = 30°.

Fabricamos peças especiais.

****O uso em máquinas de impacto reduz a vida útil dos soquetes articulados.**

As medidas podem sofrer alterações sem prévio aviso.

Soquete Articulado



□ 3/4"

Sextavado mm	Ref.	Sextavado Pol.	Ref.	Compr.
19	A 5 19	A 5 3/4"	A 5 3/4	93
20	A 5 20	A 5 13/16"	A 5 13/16	93
22	A 5 22	A 5 7/8"	A 5 7/8	93
24	A 5 24	A 5 15/16"	A 5 15/16	93
25	A 5 25	A 5 1"	A 5 1	93
27	A 5 27	A 5 1.1/8"	A 5 1.1/8	93
30	A 5 30			93
32	A 5 32	A 5 1.1/4"	A 5 1.1/4	113
34	A 5 34			113
36	A 5 36	A 5 1.3/8"	A 5 1.3/8	113
38	A 5 38	A 5 1.1/2"	A 5 1.1/2	113



Ângulo máximo de operação = 30°.
Comprimentos longos: 150, 200 e 250 mm.
Fabricamos peças especiais.

****O uso em máquinas de impacto reduz a vida útil dos soquetes articulados.**

□ 1"

Comprimento 129 mm.

Sextavado mm	Ref.	Sextavado Pol.	Ref.
24	A 6 24	15/16"	A 6 15/16
25	A 6 25	1"	A 6 1
27	A 6 27	1.1/8"	A 6 1.1/8
30	A 6 30	1.3/16"	A 6 1.3/16
32	A 6 32	1.1/4"	A 6 1.1/4
34	A 6 34		
36	A 6 36	1.3/8"	A 6 1.3/8
38	A 6 38	1.1/2"	A 6 1.1/2
40	A 6 40	1.9/16"	A 6 1.9/16
42	A 6 42	1.5/8"	A 6 1.5/8
46	A 6 46	1.15/16"	A 6 1.15/16

Ângulo máximo de operação = 30°.
Comprimentos longos: 150, 200 e 250 mm.
Fabricamos peças especiais.

****O uso em máquinas de impacto reduz a vida útil dos soquetes articulados.**

As medidas podem sofrer alterações sem prévio aviso.

Fabricamos ferramentas especiais conforme sua necessidade



Encaixe direto no torquímetro
Especificar quadrado e sextavado/estrela



Encaixe em outro soquete
Especificar entrada e saída



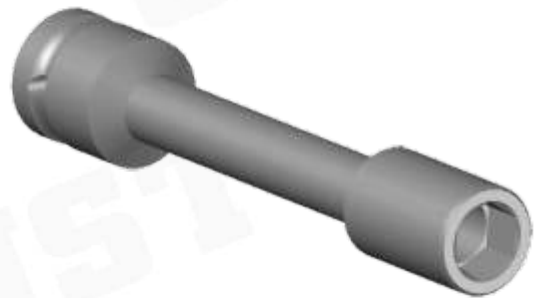
Soquete quadrado



Soquete torx interno



Soquete convexo ou tangencial



Soquete extra-longo



Soquete SP line



Soquete sextavado



Entrada rápida - fast lead
Fabricado sob encomenda



Soquete estriado ou estrela



Soquete com proteção de nylon deslizante
Fabricado sob encomenda

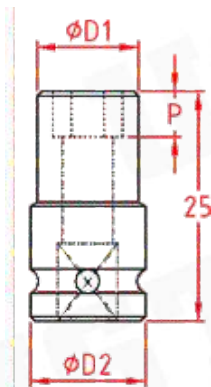


Soquete com proteção de nylon fixa
Fabricado sob encomenda

Soquete de Impacto □ 1/4"

DIN 3129

Curto - Comprimento 25 mm.



Bitola	Sextavado	Estrela	Com imã	Ø D 1	Ø D 2	P
5	1-S 5		1-S 5M	9,5	12,5	4,0
6	1-S 6		1-S 6M	11,0	12,5	4,0
7	1-S 7		1-S 7M	12,0	12,5	5,0
8	1-S 8	1-E 8	1-S 8M	12,5	12,5	5,0
9	1-S 9	1-E 9	1-S 9M	13,5	13,5	6,0
10	1-S 10	1-E 10	1-S 10M	15,5	15,5	7,0
11	1-S 11	1-E 11	1-S 11M	16,5	16,5	7,0
12	1-S 12	1-E 12	1-S 12M	18,0	18,0	8,0
13	1-S 13	1-E 13		20,0	20,0	8,0
14	1-S 14	1-E 14		21,0	21,0	9,0
15	1-S 15	1-E 15		22,8	22,8	9,0
16	1-S 16	1-E 16		24,0	24,0	10,0
17	1-S 17	1-E 17		25,0	25,0	10,0
3/16"	1-S 3/16		1-S 3/16M	9,5	12,5	3,0
7/32"	1-S 7/32		1-S 7/32M	10,0	12,5	4,0
1/4"	1-S 1/4		1-S 1/4M	11,5	12,5	5,0
5/16"	1-S 5/16	1-E 5/16	1-S 5/16M	12,5	12,5	5,0
3/8"	1-S 3/8	1-E 3/8	1-S 3/8M	15,5	15,5	6,0
7/16"	1-S 7/16	1-E 7/16	1-S 7/16M	16,5	16,5	7,0
1/2"	1-S 1/2	1-E 1/2		19,0	19,0	8,0
9/16"	1-S 9/16	1-E 9/16		21,0	21,0	9,0
5/8"	1-S 5/8	1-E 5/8		24,0	24,0	10,0
11/16"	1-S 11/16	1-E 11/16		25,0	25,0	10,0

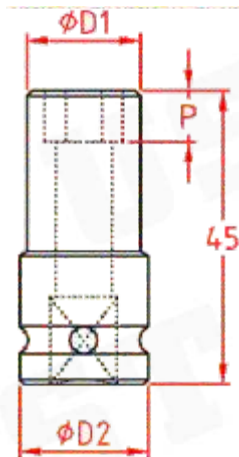
Fabricamos soquetes especiais.

As medidas podem sofrer alterações sem prévio aviso.

Soquete de Impacto □ 1/4"

DIN 3129

Médio - Comprimento 45 mm.



Bitola	Sextavado	Estrela	Ø D 1	Ø D 2	P
5	1-S 5L		9,5	12,5	4,0
6	1-S 6L		11,0	12,5	4,0
7	1-S 7L		12,0	12,5	5,0
8	1-S 8L	1-E 8L	12,5	12,5	5,0
9	1-S 9L	1-E 9L	13,5	13,5	6,0
10	1-S 10L	1-E 10L	15,5	15,5	7,0
11	1-S 11L	1-E 11L	16,5	16,5	7,0
12	1-S 12L	1-E 12L	18,0	18,0	8,0
13	1-S 13L	1-E 13L	20,0	20,0	8,0
14	1-S 14L	1-E 14L	21,0	21,0	9,0
15	1-S 15L	1-E 15L	22,8	22,8	9,0
16	1-S 16L	1-E 16L	24,0	24,0	10,0
17	1-S 17L	1-E 17L	25,0	25,0	10,0
3/16"	1-S 3/16L		9,5	12,5	3,0
7/32"	1-S 7/32L		10,0	12,5	4,0
1/4"	1-S 1/4L		11,5	12,5	5,0
5/16"	1-S 5/16L	1-E 5/16L	12,5	12,5	5,0
3/8"	1-S 3/8L	1-E 3/8L	15,5	15,5	6,0
7/16"	1-S 7/16L	1-E 7/16L	16,5	16,5	7,0
1/2"	1-S 1/2L	1-E 1/2L	19,0	19,0	8,0
9/16"	1-S 9/16L	1-E 9/16L	21,0	21,0	9,0
5/8"	1-S 5/8L	1-E 5/8L	24,0	24,0	10,0
11/16"	1-S 11/16L	1-E 11/16L	25,0	25,0	10,0

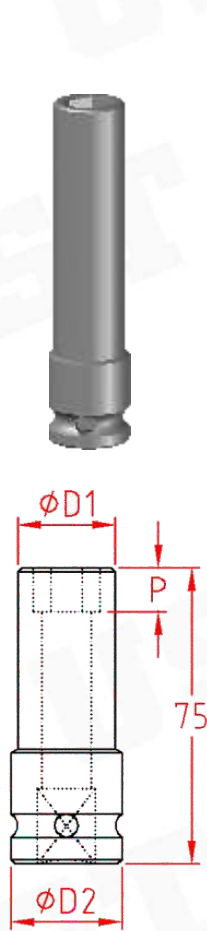
Fabricamos soquetes com imã e especiais.

As medidas podem sofrer alterações sem prévio aviso.

Soquete de Impacto □ 1/4"

DIN 3129

Longo - Comprimento 75 mm.



Bitola	Sextavado	Estrela	Ø D 1	Ø D 2	P
5	1-S 5X		9,5	12,5	4,0
6	1-S 6X		11,0	12,5	4,0
7	1-S 7X		12,0	12,5	5,0
8	1-S 8X	1-E 8X	12,5	12,5	5,0
9	1-S 9X	1-E 9X	13,5	13,5	6,0
10	1-S 10X	1-E 10X	15,5	15,5	7,0
11	1-S 11X	1-E 11X	16,5	16,5	7,0
12	1-S 12X	1-E 12X	18,0	18,0	8,0
13	1-S 13X	1-E 13X	20,0	20,0	8,0
14	1-S 14X	1-E 14X	21,0	21,0	9,0
15	1-S 15X	1-E 15X	22,8	22,8	9,0
16	1-S 16X	1-E 16X	24,0	24,0	10,0
17	1-S 17X	1-E 17X	25,0	25,0	10,0
3/16"	1-S 3/16X		9,5	12,5	3,0
7/32"	1-S 7/32X		10,0	12,5	4,0
1/4"	1-S 1/4X		11,5	12,5	5,0
5/16"	1-S 5/16X	1-E 5/16X	12,5	12,5	5,0
3/8"	1-S 3/8X	1-E 3/8X	15,5	15,5	6,0
7/16"	1-S 7/16X	1-E 7/16X	16,5	16,5	7,0
1/2"	1-S 1/2X	1-E 1/2X	19,0	19,0	8,0
9/16"	1-S 9/16X	1-E 9/16X	21,0	21,0	9,0
5/8"	1-S 5/8X	1-E 5/8X	24,0	24,0	10,0
11/16"	1-S 11/16X	1-E 11/16X	25,0	25,0	10,0

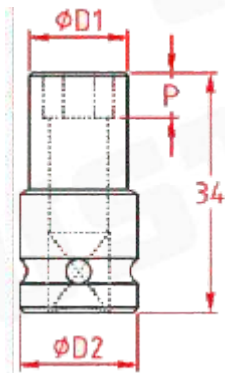
Fabricamos soquetes com imã e especiais.

As medidas podem sofrer alterações sem prévio aviso.

Soquete de Impacto □ 3/8"

DIN 3129

Curto - Comprimento 34 mm.



Bitola	Sextavado	Estrela	Com imã	Surface	Ø D 1	Ø D 2	P
5	2-S 5		2-S 5M		9,5	18,5	4,0
6	2-S 6		2-S 6M		11,0	18,5	4,0
7	2-S 7		2-S 7M		12,0	18,5	5,0
8	2-S 8	2-E 8	2-S 8M	2-C 8	14,0	18,5	6,0
9	2-S 9	2-E 9	2-S 9M	2-C 9	15,3	18,5	6,5
10	2-S 10	2-E 10	2-S 10M	2-C 10	16,6	18,5	7,0
11	2-S 11	2-E11	2-S 11M	2-C11	18,0	18,0	7,5
12	2-S 12	2-E 12	2-S 12M	2-C 12	18,5	18,5	8,0
13	2-S 13	2-E 13	2-S 13M	2-C 13	20,3	22,0	9,0
14	2-S 14	2-E 14	2-S 14M	2-C 14	22,0	22,0	10,0
15	2-S 15	2-E 15	2-S 15M	2-C 15	23,0	22,0	10,5
16	2-S 16	2-E 16	2-S 16M	2-C 16	24,0	22,0	11,0
17	2-S 17	2-E 17	2-S 17M	2-C 17	25,3	22,0	11,0
18	2-S 18	2-E 18	2-S 18M	2-C 18	26,5	22,0	12,0
19	2-S 19	2-E 19	2-S 19M	2-C 19	28,0	22,0	13,0
3/16"	2-S 3/16		2-S 3/16M		9,5	18,5	4,0
7/32"	2-S 7/32		2-S 7/32M		10,0	18,5	4,0
1/4"	2-S 1/4		2-S 1/4M		11,5	18,5	4,0
5/16"	2-S 5/16	2-E 5/16	2-S 5/16M	2-C 5/16	14,0	18,5	6,0
3/8"	2-S 3/8	2-E 3/8	2-S 3/8M	2-C 3/8	15,6	18,5	6,5
7/16"	2-S 7/16	2-E 7/16	2-S 7/16M	2-C 7/16	18,0	18,5	7,0
1/2"	2-S 1/2	2-E 1/2	2-S 1/2M	2-C 1/2	20,3	22,0	8,0
9/16"	2-S 9/16	2-E 9/16	2-S 9/16M	2-C 9/16	22,0	22,0	9,0
5/8"	2-S 5/8	2-E 5/8	2-S 5/8M	2-C 5/8	24,0	22,0	10,5
11/16"	2-S 11/16	2-E 11/16	2-S 11/16M	2-C 11/16	25,3	22,0	11,0
3/4"	2-S 3/4	2-E 3/4	2-S 3/4M	2-C 3/4	28,0	22,0	13,0

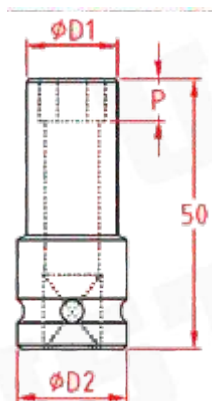
Fabricamos soquetes especiais.

As medidas podem sofrer alterações sem prévio aviso.

Soquete de Impacto □ 3/8"

DIN 3129

Médio - Comprimento 50 mm.



Bitola	Sextavado	Estrela	Surface	Ø D 1	Ø D 2	P
5	2-S 5L			9,5	18,5	4,0
6	2-S 6L			11,0	18,5	4,0
7	2-S 7L			12,0	18,5	5,0
8	2-S 8L	2-E 8L	2-C 8L	14,0	18,5	6,0
9	2-S 9L	2-E 9L	2-C 9L	15,3	18,5	6,5
10	2-S 10L	2-E 10L	2-C 10L	16,6	18,5	7,0
11	2-S 11L	2-E 11L	2-C 11L	18,0	18,0	7,5
12	2-S 12L	2-E 12L	2-C 12L	18,5	18,5	8,0
13	2-S 13L	2-E 13L	2-C 13L	20,3	22,0	9,0
14	2-S 14L	2-E 14L	2-C 14L	22,0	22,0	10,0
15	2-S 15L	2-E 15L	2-C 15L	23,0	22,0	10,5
16	2-S 16L	2-E 16L	2-C 16L	24,0	22,0	11,0
17	2-S 17L	2-E 17L	2-C 17L	25,3	22,0	11,0
18	2-S 18L	2-E 18L	2-C 18L	26,5	22,0	12,0
19	2-S 19L	2-E 19L	2-C 19L	28,0	22,0	13,0
3/16"	2-S 3/16L			9,5	18,5	4,0
7/32"	2-S 7/32L			10,0	18,5	4,0
1/4"	2-S 1/4L			11,5	18,5	4,0
5/16"	2-S 5/16L	2-E 5/16L	2-C 5/16L	14,0	18,5	6,0
3/8"	2-S 3/8L	2-E 3/8L	2-C 3/8L	15,6	18,5	6,5
7/16"	2-S 7/16L	2-E 7/16L	2-C 7/16L	18,0	18,5	7,0
1/2"	2-S 1/2L	2-E 1/2L	2-C 1/2L	20,3	22,0	8,0
9/16"	2-S 9/16L	2-E 9/16L	2-C 9/16L	22,0	22,0	9,0
5/8"	2-S 5/8L	2-E 5/8L	2-C 5/8L	24,0	22,0	10,5
11/16"	2-S 11/16L	2-E 11/16L	2-C 11/16L	25,3	22,0	11,0
3/4"	2-S 3/4L	2-E 3/4L	2-C 3/4L	28,0	22,0	13,0

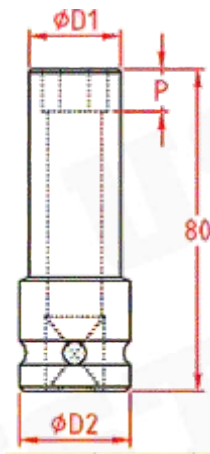
Fabricamos soquetes com imã e especiais.

As medidas podem sofrer alterações sem prévio aviso.

Soquete de Impacto □ 3/8"

DIN 3129

Longo - Comprimento 80 mm.



Bitola	Sextavado	Estrela	Surface	Ø D 1	Ø D 2	P
5	2-S 5X			9,5	18,5	4,0
6	2-S 6X			11,0	18,5	4,0
7	2-S 7X			12,0	18,5	5,0
8	2-S 8X	2-E 8X	2-C 8X	14,0	18,5	6,0
9	2-S 9X	2-E 9X	2-C 9X	15,3	18,5	6,5
10	2-S 10X	2-E 10X	2-C 10X	16,6	18,5	7,0
11	2-S 11X	2-E 11X	2-C 11X	18,0	18,0	7,5
12	2-S 12X	2-E 12X	2-C 12X	18,5	18,5	8,0
13	2-S 13X	2-E 13X	2-C 13X	20,3	22,0	9,0
14	2-S 14X	2-E 14X	2-C 14X	22,0	22,0	10,0
15	2-S 15X	2-E 15X	2-C 15X	23,0	22,0	10,5
16	2-S 16X	2-E 16X	2-C 16X	24,0	22,0	11,0
17	2-S 17X	2-E 17X	2-C 17X	25,3	22,0	11,0
18	2-S 18X	2-E 18X	2-C 18X	26,5	22,0	12,0
19	2-S 19X	2-E 19X	2-C 19X	28,0	22,0	13,0
3/16"	2-S 3/16X			9,5	18,5	4,0
7/32"	2-S 7/32X			10,0	18,5	4,0
1/4"	2-S 1/4X			11,5	18,5	4,0
5/16"	2-S 5/16X	2-E 5/16X	2-C 5/16X	14,0	18,5	6,0
3/8"	2-S 3/8X	2-E 3/8X	2-C 3/8X	15,6	18,5	6,5
7/16"	2-S 7/16X	2-E 7/16X	2-C 7/16X	18,0	18,5	7,0
1/2"	2-S 1/2X	2-E 1/2X	2-C 1/2X	20,3	22,0	8,0
9/16"	2-S 9/16X	2-E 9/16X	2-C 9/16X	22,0	22,0	9,0
5/8"	2-S 5/8X	2-E 5/8X	2-C 5/8X	24,0	22,0	10,5
11/16"	2-S 11/16X	2-E 11/16X	2-C 11/16X	25,3	22,0	11,0
3/4"	2-S 3/4X	2-E 3/4X	2-C 3/4X	28,0	22,0	13,0

Fabricamos soquetes com imã e especiais.

As medidas podem sofrer alterações sem prévio aviso.

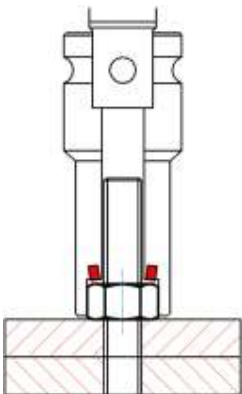
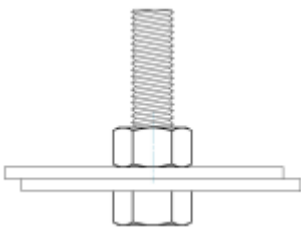
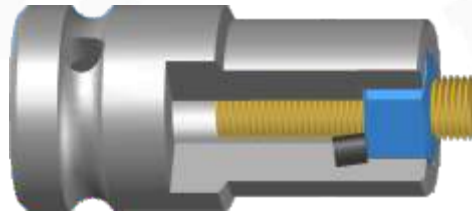
Soquete de Impacto □ 3/8"

DIN 3129

Com imãs laterais

Para aplicações onde existe o excesso de parafuso ou prisioneiro.
Tem a vantagem de não possuir elementos móveis, tem furo com passagem livre.
Substitui com vantagens o sistema de imã com mola.

Aplicação somente com porcas



Bitola	Comprimento 50 mm	Comprimento 80 mm
	Furo 35 mm	Furo 65 mm
5	2-S 5 L ML	2-S 5 X ML
6	2-S 6 L ML	2-S 6 X ML
7	2-S 7 L ML	2-S 7 X ML
8	2-S 8 L ML	2-S 8 X ML
9	2-S 9 L ML	2-S 9 X ML
10	2-S 10 L ML	2-S 10 X ML
11	2-S 11 L ML	2-S 11 X ML
12	2-S 12 L ML	2-S 12 X ML
13	2-S 13 L ML	2-S 13 X ML
14	2-S 14 L ML	2-S 14 X ML
15	2-S 15 L ML	2-S 15 X ML
16	2-S 16 L ML	2-S 16 X ML
17	2-S 17 L ML	2-S 17 X ML
18	2-S 18 L ML	2-S 18 X ML
19	2-S 19 L ML	2-S 19 X ML
3/16"	2-S 3/16 L ML	2-S 3/16 X ML
7/32"	2-S 7/32 L ML	2-S 7/32 X ML
1/4"	2-S 1/4 L ML	2-S 1/4 X ML
5/16"	2-S 5/16 L ML	2-S 5/16 X ML
3/8"	2-S 3/8 L ML	2-S 3/8 X ML
7/16"	2-S 7/16 L ML	2-S 7/16 X ML
1/2"	2-S 1/2 L ML	2-S 1/2 X ML
9/16"	2-S 9/16 L ML	2-S 9/16 X ML
5/8"	2-S 5/8 L ML	2-S 5/8 X ML
11/16"	2-S 11/16 L ML	2-S 11/16 X ML
3/4"	2-S 3/4 L ML	2-S 3/4 X ML

As medidas podem sofrer alterações sem prévio aviso.

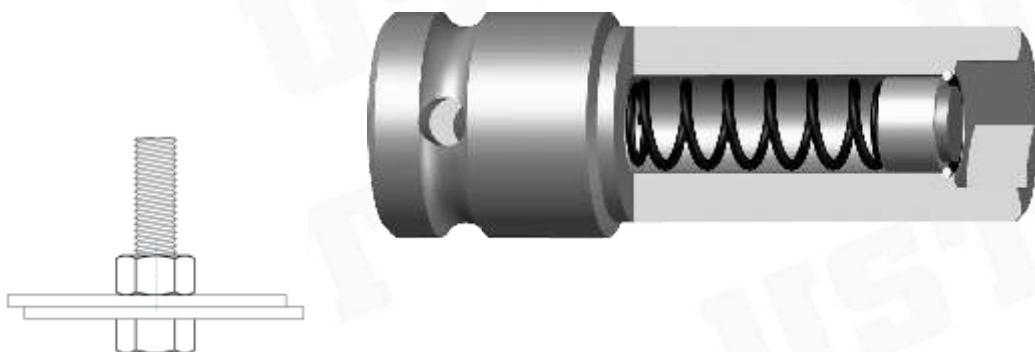
Soquete de Impacto □ 3/8"

DIN 3129

Com imã Retrátil

Para aplicações onde existe o excesso de parafuso ou prisioneiro.

Aplicação somente com porcas



Bitola	Comprimento 50 mm	Comprimento 80 mm
	Passagem 15 mm	Passagem 45 mm
8	2-S 8 L MR	2-S 8 X MR
9	2-S 9 L MR	2-S 9 X MR
10	2-S 10 L MR	2-S 10 X MR
11	2-S 11 L MR	2-S 11 X MR
12	2-S 12 L MR	2-S 12 X MR
13	2-S 13 L MR	2-S 13 X MR
14	2-S 14 L MR	2-S 14 X MR
15	2-S 15 L MR	2-S 15 X MR
16	2-S 16 L MR	2-S 16 X MR
17	2-S 17 L MR	2-S 17 X MR
18	2-S 18 L MR	2-S 18 X MR
19	2-S 19 L MR	2-S 19 X MR
5/16"	2-S 5/16 L MR	2-S 5/16 X MR
3/8"	2-S 3/8 L MR	2-S 3/8 X MR
7/16"	2-S 7/16 L MR	2-S 7/16 X MR
1/2"	2-S 1/2 L MR	2-S 1/2 X MR
9/16"	2-S 9/16 L MR	2-S 9/16 X MR
5/8"	2-S 5/8 L MR	2-S 5/8 X MR
11/16"	2-S 11/16 L MR	2-S 11/16 X MR
3/4"	2-S 3/4 L MR	2-S 3/4 X MR

As medidas podem sofrer alterações sem prévio aviso.

Soquetes Longos

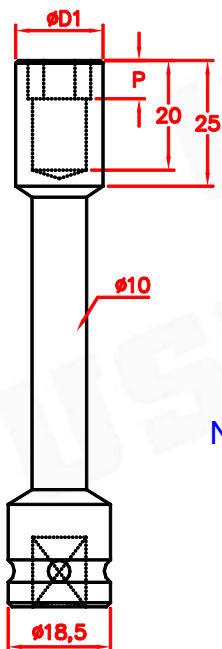
DIN 3129

Encaixe 3/8"



Sextavado	Comprimento					P	Ø D 1
	100	150	200	250	300		
8	L 2-S 8 100	L 2-S 8 150	L 2-S 8 200	L 2-S 8 250	L 2-S 8 300	8	13,0
10	L 2-S 10 100	L 2-S 10 150	L 2-S 10 200	L 2-S 10 250	L 2-S 10 300	10	16,0
11	L 2-S 11 100	L 2-S 11 150	L 2-S 11 200	L 2-S 11 250	L 2-S 11 300	12	18,0
12	L 2-S 12 100	L 2-S 12 150	L 2-S 12 200	L 2-S 12 250	L 2-S 12 300	12	20,0
13	L 2-S 13 100	L 2-S 13 150	L 2-S 13 200	L 2-S 13 250	L 2-S 13 300	12	21,0
14	L 2-S 14 100	L 2-S 14 150	L 2-S 14 200	L 2-S 14 250	L 2-S 14 300	12	22,0
15	L 2-S 15 100	L 2-S 15 150	L 2-S 15 200	L 2-S 15 250	L 2-S 15 300	12	23,0
16	L 2-S 16 100	L 2-S 16 150	L 2-S 16 200	L 2-S 16 250	L 2-S 16 300	13	24,0
17	L 2-S 17 100	L 2-S 17 150	L 2-S 17 200	L 2-S 17 250	L 2-S 17 300	15	25,0
18	L 2-S 18 100	L 2-S 18 150	L 2-S 18 200	L 2-S 18 250	L 2-S 18 300	15	26,5
19	L 2-S 19 100	L 2-S 19 150	L 2-S 19 200	L 2-S 19 250	L 2-S 19 300	15	27,5

Fabricamos soquetes em polegada e especiais.



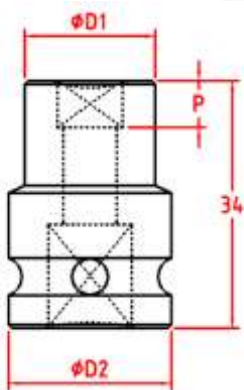
Norma DIN 3121 e 3129

As medidas podem sofrer alterações sem prévio aviso.

Soquete quadrado

DIN 3129

Encaixe 3/8"
Comprimento 34 mm.



Quadrado	Referência	Ø D 1	Ø D 2	P
8	2-Q 8	16	22	6
9	2-Q 9	18	22	6
10	2-Q 10	20	22	8
11	2-Q 11	22	22	8
12	2-Q 12	24	25	8
13	2-Q 13	25	25	8
14	2-Q 14	25	25	10
15	2-Q 15	26	26	11
16	2-Q 16	28	26	11
17	2-Q 17	32	26	11
18	2-Q 18	34	26	12
19	2-Q 19	35	26	12
5/16"	2-Q 5/16	16	22	6
3/8"	2-Q 3/8	20	22	8
7/16"	2-Q 7/16	22	22	8
1/2"	2-Q 1/2	25	25	8
9/16"	2-Q 9/16	25	25	10
5/8"	2-Q 5/8	28	26	11
11/16"	2-Q 11/16	32	26	11
3/4"	2-Q 3/4	35	26	12

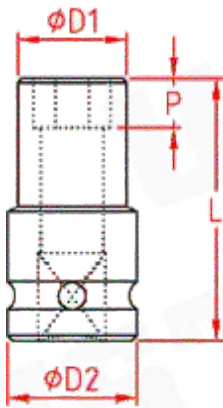
Fabricamos soquetes em polegada e especiais.

As medidas podem sofrer alterações sem prévio aviso.

Soquete □ 1/2" Parede fina

Curto= 38 e 45 mm-conforme a bitola

Não recomendado para máquinas de impacto



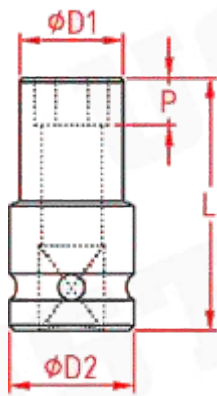
Bitola	Sextavado	Estrela	Ø D 1	Ø D 2	P	L
8	3-S 8F	3-E 8F	14,0	25,0	6,0	38
9	3-S 9F	3-E 9F	14,5	25,0	6,0	38
10	3-S 10F	3-E 10F	15,9	25,0	7,0	38
11	3-S 11F	3-E 11F	16,7	25,0	7,0	38
12	3-S 12F	3-E 12F	17,5	25,0	7,0	38
13	3-S 13F	3-E 13F	18,7	25,0	7,5	38
14	3-S 14F	3-E 14F	20,6	25,0	8,0	38
15	3-S 15F	3-E 15F	22,2	25,0	9,0	38
16	3-S 16F	3-E 16F	23,0	25,0	10,0	38
17	3-S 17F	3-E 17F	23,8	25,0	11,0	38
18	3-S 18F	3-E 18F	25,4	25,0	12,0	38
19	3-S 19F	3-E 19F	26,3	27,0	13,0	38
20	3-S 20F	3-E 20F	27,0	27,0	13,0	38
22	3-S 22F	3-E 22F	30,2	30,0	13,0	38
23	3-S 23F	3-E 23F	32,5	30,0	13,0	38
24	3-S 24F	3-E 24F	33,3	30,0	14,0	38
25	3-S 25F	3-E 25F	34,5	30,0	14,0	38
27	3-S 27F	3-E 27F	36,5	30,0	15,0	45
30	3-S 30F	3-E 30F	39,7	30,0	18,0	45
32	3-S 32F	3-E 32F	42,9	30,0	18	45
5/16"	3-S 5/16F	3-E 5/16F	14,0	25,0	6,0	38
3/8"	3-S 3/8F	3-E 3/8F	15,9	25,0	6,5	38
7/16"	3-S 7/16F	3-E 7/16F	16,7	25,0	6,5	38
1/2"	3-S 1/2F	3-E 1/2F	18,7	25,0	7,5	38
9/16"	3-S 9/16F	3-E 9/16F	20,6	25,0	7,5	38
5/8"	3-S 5/8F	3-E 5/8F	23,0	25,0	9,0	38
11/16"	3-S 11/16F	3-E 11/16F	23,8	25,0	11,0	38
3/4"	3-S 3/4F	3-E 3/4F	26,3	27,0	13,0	38
13/16"	3-S 13/16F	3-E 13/16F	27,0	27,0	13,0	38
7/8"	3-S 7/8F	3-E 7/8F	30,2	30,0	13,0	38
15/16"	3-S 15/16F	3-E 15/16F	33,3	30,0	14,0	38
1"	3-S 1F	3-E 1F	34,5	30,0	15,0	38
1.1/16"	3-S 1.1/16F	3-E 1.1/16F	36,5	30,0	15,0	38
1.1/8"	3-S 1.1/8F	3-E 1.1/8F	38,1	30,0	15,0	45
1.3/16"	3-S 1.3/16F	3-E 1.3/16F	39,7	30,0	18,0	45
1.1/4"	3-S 1.1/4F	3-E 1.1/4F	40,9	30,0	18,0	45

Fabricamos soquetes com imã e especiais.

As medidas podem sofrer alterações sem prévio aviso.

Soquete de Impacto □ 1/2" Reforçado

Curto= 38 e 45 mm-conforme a bitola



Bitola	Sextavado	Estrela	$\phi D 1$	$\phi D 2$	P	L
8	3-S 8R	3-E 8R	17,0	25,0	6,0	38
10	3-S 10R	3-E 10R	20,0	25,0	7,0	38
11	3-S 11R	3-E 11R	24,0	25,0	7,0	38
12	3-S 12R	3-E 12R	25,0	25,0	7,0	38
13	3-S 13R	3-E13R	26,0	30,0	7,5	38
14	3-S 14R	3-E 14R	27,0	30,0	8,0	38
15	3-S 15R	3-E 15R	29,0	30,0	9,0	38
16	3-S 16R	3-E 16R	30,0	30,0	10,0	38
17	3-S 17R	3-E 17R	31,5	31,5	11,0	38
18	3-S 18R	3-E 18R	33,0	33,0	12,0	38
19	3-S 19R	3-E 19R	35,0	35,0	13,0	38
20	3-S 20R	3-E 20R	36,0	36,0	13,0	38
22	3-S 22R	3-E 22R	37,5	37,5	13,0	38
23	3-S 23R	3-E 23R	40,0	40,0	13,0	38
24	3-S 24R	3-E 24R	40,0	40,0	14,0	38
25	3-S 25R	3-E 25R	42,5	42,5	14,0	38
27	3-S 27R	3-E 27R	45,0	45,0	15,0	45
30	3-S 30R	3-E 30R	48,0	48,0	18,0	45
32	3-S 32R	3-E 32R	50,0	50,0	18	45
5/16"	3-S 5/16R	3-E 5/16R	17,0	17,0	6,0	38
3/8"	3-S 3/8R	3-E 3/8R	20,0	20,0	6,5	38
7/16"	3-S 7/16R	3-E 7/16R	24,0	24,0	6,5	38
1/2"	3-S 1/2R	3-E 1/2R	26,0	26,0	7,5	38
9/16"	3-S 9/16R	3-E 9/16R	27,0	27,0	7,5	38
5/8"	3-S 5/8R	3-E 5/8R	30,0	30,0	9,0	38
11/16"	3-S 11/16R	3-E 11/16R	31,5	31,5	11,0	38
3/4"	3-S 3/4R	3-E 3/4R	35,0	35,0	13,0	38
13/16"	3-S 13/16R	3-E 13/16R	36,0	36,0	13,0	38
7/8"	3-S 7/8R	3-E 7/8R	37,5	37,5	13,0	38
15/16"	3-S 15/16R	3-E 15/16R	40,0	40,0	14,0	38
1"	3-S 1R	3-E 1R	42,5	42,5	15,0	38
1.1/16"	3-S 1.1/16R	3-E 1.1/16R	45,0	45,0	15,0	38
1.1/8"	3-S 1.1/8R	3-E 1.1/8R	47,0	47,0	15,0	45
1.3/16"	3-S 1.3/16R	3-E 1.3/16R	48,0	48,0	18,0	45
1.1/4"	3-S 1.1/4R	3-E 1.1/4R	50,0	50,0	18,0	45

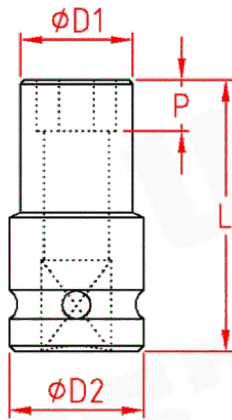
Fabricamos soquetes com imã e especiais.

As medidas podem sofrer alterações sem prévio aviso.

Soquete de Impacto □ 1/2"

DIN 3129

Curto= 38 e 45 mm-conforme a bitola



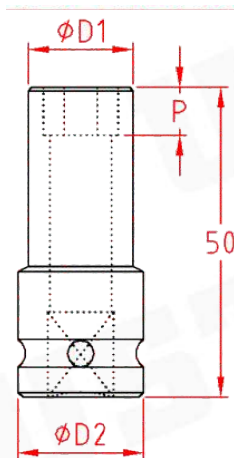
Bitola	Sextavado	Estrela	Surface	Ø D 1	Ø D 2	P	L
8	3-S 8	3-E 8	3-C 8	15,3	25,0	6,0	38
10	3-S 10	3-E 10	3-C 10	17,8	25,0	7,0	38
11	3-S 11	3-E 11	3-C 11	19,0	25,0	7,0	38
12	3-S 12	3-E 12	3-C 12	20,3	25,0	7,0	38
13	3-S 13	3-E13	3-C13	21,5	25,0	7,5	38
14	3-S 14	3-E 14	3-C 14	22,8	25,0	8,0	38
15	3-S 15	3-E 15	3-C 15	24,0	25,0	9,0	38
16	3-S 16	3-E 16	3-C 16	25,0	25,0	10,0	38
17	3-S 17	3-E 17	3-C 17	26,5	26,5	11,0	38
18	3-S 18	3-E 18	3-C 18	28,0	28,0	12,0	38
19	3-S 19	3-E 19	3-C 19	29,0	30,0	13,0	38
20	3-S 20	3-E 20	3-C 20	31,0	30,0	13,0	38
22	3-S 22	3-E 22	3-C 22	32,8	30,0	13,0	38
23	3-S 23	3-E 23	3-C 23	35,0	30,0	13,0	38
24	3-S 24	3-E 24	3-C 24	35,3	30,0	14,0	38
25	3-S 25	3-E 25	3-C 25	38,0	30,0	14,0	38
27	3-S 27	3-E 27	3-C 27	39,0	30,0	15,0	45
30	3-S 30	3-E 30	3-C 30	42,8	30,0	18,0	45
32	3-S 32	3-E 32	3-C 32	43,0	30,0	18	45
5/16"	3-S 5/16	3-E 5/16	3-C 5/16	15,3	25,0	6,0	38
3/8"	3-S 3/8	3-E 3/8	3-CE 3/8	17,8	25,0	6,5	38
7/16"	3-S 7/16	3-E 7/16	3-CE 7/16	19,0	25,0	6,5	38
1/2"	3-S 1/2	3-E 1/2	3-C 1/2	21,0	25,0	7,5	38
9/16"	3-S 9/16	3-E 9/16	3-C 9/16	23,5	25,0	7,5	38
5/8"	3-S 5/8	3-E 5/8	3-C 5/8	25,0	25,0	9,0	38
11/16"	3-S 11/16	3-E 11/16	3-C 11/16	28,0	30,0	11,0	38
3/4"	3-S 3/4	3-E 3/4	3-C 3/4	30,0	30,0	13,0	38
13/16"	3-S 13/16	3-E 13/16	3-C 13/16	32,0	30,0	13,0	38
7/8"	3-S 7/8	3-E 7/8	3-C 7/8	34,0	30,0	13,0	38
15/16"	3-S 15/16	3-E 15/16	3-C 15/16	37,0	30,0	14,0	38
1"	3-S 1	3-E 1	3-C 1	37,3	30,0	15,0	38
1.1/16"	3-S 1.1/16	3-E 1.1/16	3-C 1.1/16	39,0	30,0	15,0	38
1.1/8"	3-S 1.1/8	3-E 1.1/8	3-C 1.1/8	41,0	30,0	15,0	45
1.3/16"	3-S 1.3/16	3-E 1.3/16	3-C 1.3/16	42,8	30,0	18,0	45
1.1/4"	3-S 1.1/4	3-E 1.1/4	3-C 1.1/4	43,0	30,0	18,0	45

Fabricamos soquetes com imã e especiais.

As medidas podem sofrer alterações sem prévio aviso.

Soquete □ 1/2" Parede fina

Médio - comprimento 50 mm.
Não recomendado para máquinas de impacto



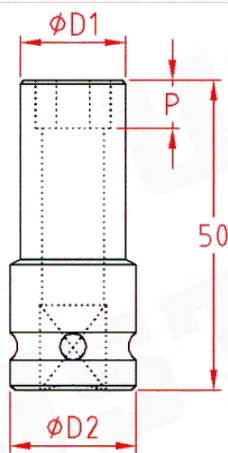
Bitola	Sextavado	Estrela	Ø D 1	Ø D 2	P
8	3-S 8LF	3-E 8LF	14,0	25,0	6,0
10	3-S 10LF	3-E 10LF	15,9	25,0	7,0
11	3-S 11LF	3-E 11LF	16,7	25,0	7,0
12	3-S 12LF	3-E 12LF	17,5	25,0	7,0
13	3-S 13LF	3-E13LF	18,7	25,0	7,5
14	3-S 14LF	3-E 14LF	20,6	25,0	8,0
15	3-S 15LF	3-E 15LF	22,2	25,0	9,0
16	3-S 16LF	3-E 16LF	23,0	25,0	10,0
17	3-S 17LF	3-E 17LF	23,8	25,0	11,0
18	3-S 18LF	3-E 18LF	25,4	25,0	12,0
19	3-S 19LF	3-E 19LF	26,3	30,0	13,0
20	3-S 20LF	3-E 20LF	27,0	30,0	13,0
22	3-S 22LF	3-E 22LF	30,2	30,0	13,0
23	3-S 23LF	3-E 23LF	32,5	30,0	13,0
24	3-S 24LF	3-E 24LF	33,5	30,0	14,0
25	3-S 25LF	3-E 25LF	34,5	30,0	14,0
27	3-S 27LF	3-E 27LF	36,5	30,0	15,0
30	3-S 30LF	3-E 30LF	39,7	30,0	18,0
32	3-S 32LF	3-E 32LF	42,9	30,0	18
5/16"	3-S 5/16LF	3-E 5/16LF	14,0	25,0	6,0
3/8"	3-S 3/8LF	3-E 3/8LF	15,9	25,0	6,5
7/16"	3-S 7/16LF	3-E 7/16LF	16,7	25,0	6,5
1/2"	3-S 1/2LF	3-E 1/2LF	18,7	25,0	7,5
9/16"	3-S 9/16LF	3-E 9/16LF	20,6	25,0	7,5
5/8"	3-S 5/8LF	3-E 5/8LF	23,0	25,0	9,0
11/16"	3-S 11/16LF	3-E 11/16LF	23,8	25,0	11,0
3/4"	3-S 3/4LF	3-E 3/4LF	26,3	30,0	13,0
13/16"	3-S 13/16LF	3-E 13/16LF	27,0	30,0	13,0
7/8"	3-S 7/8LF	3-E 7/8LF	30,2	30,0	13,0
15/16"	3-S 15/16LF	3-E 15/16LF	33,3	30,0	14,0
1"	3-S 1LF	3-E 1LF	34,5	30,0	15,0
1.1/16"	3-S 1.1/16LF	3-E 1.1/16LF	36,5	30,0	15,0
1.1/8"	3-S 1.1/8LF	3-E 1.1/8LF	38,1	30,0	15,0
1.3/16"	3-S 1.3/16LF	3-E 1.3/16LF	39,7	30,0	18,0
1.1/4"	3-S 1.1/4LF	3-E 1.1/4LF	42,9	30,0	18,0

Fabricamos soquetes com imã e especiais.

As medidas podem sofrer alterações sem prévio aviso.

Soquete de Impacto □ 1/2" Reforçado

Médio - comprimento 50 mm.

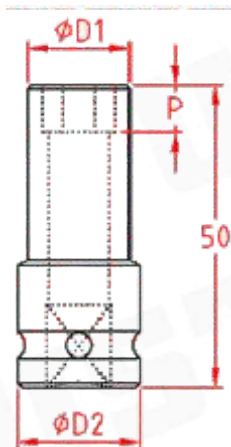


Bitola	Sextavado	Estrela	$\phi D 1$	$\phi D 2$	P
8	3-S 8LR	3-E 8LR	17,0	25,0	6,0
10	3-S 10LR	3-E 10LR	20,0	25,0	7,0
11	3-S 11LR	3-E 11LR	24,0	25,0	7,0
12	3-S 12LR	3-E 12LR	25,0	25,0	7,0
13	3-S 13LR	3-E 13LR	26,0	30,0	7,5
14	3-S 14LR	3-E 14LR	27,0	30,0	8,0
15	3-S 15LR	3-E 15LR	29,0	30,0	9,0
16	3-S 16LR	3-E 16LR	30,0	30,0	10,0
17	3-S 17LR	3-E 17LR	31,5	31,5	11,0
18	3-S 18LR	3-E 18LR	33,0	33,0	12,0
19	3-S 19LR	3-E 19LR	35,0	35,0	13,0
20	3-S 20LR	3-E 20LR	36,0	36,0	13,0
22	3-S 22LR	3-E 22LR	37,5	37,5	13,0
23	3-S 23LR	3-E 23LR	40,0	40,0	13,0
24	3-S 24LR	3-E 24LR	40,0	40,0	14,0
25	3-S 25LR	3-E 25LR	42,5	42,5	14,0
27	3-S 27LR	3-E 27LR	45,0	45,0	15,0
30	3-S 30LR	3-E 30LR	48,0	48,0	18,0
32	3-S 32LR	3-E 32LR	50,0	50,0	18
5/16"	3-S 5/16LR	3-E 5/16LR	17,0	25,0	6,0
3/8"	3-S 3/8LR	3-E 3/8LR	20,0	25,0	6,5
7/16"	3-S 7/16LR	3-E 7/16LR	24,0	25,0	6,5
1/2"	3-S 1/2LR	3-E 1/2LR	26,0	30,0	7,5
9/16"	3-S 9/16LR	3-E 9/16LR	27,0	30,0	7,5
5/8"	3-S 5/8LR	3-E 5/8LR	30,0	30,0	9,0
11/16"	3-S 11/16LR	3-E 11/16LR	31,5	31,5	11,0
3/4"	3-S 3/4LR	3-E 3/4LR	35,0	35,0	13,0
13/16"	3-S 13/16LR	3-E 13/16LR	36,0	36,0	13,0
7/8"	3-S 7/8LR	3-E 7/8LR	37,5	37,5	13,0
15/16"	3-S 15/16LR	3-E 15/16LR	40,0	40,0	14,0
1"	3-S 1LR	3-E 1LR	42,5	42,5	15,0
1.1/16"	3-S 1.1/16LR	3-E 1.1/16LR	45,0	45,0	15,0
1.1/8"	3-S 1.1/8LR	3-E 1.1/8LR	47,0	47,0	15,0
1.3/16"	3-S 1.3/16LR	3-E 1.3/16LR	48,0	48,0	18,0
1.1/4"	3-S 1.1/4LR	3-E 1.1/4LR	50,0	50,0	18,0

Soquete de Impacto □ 1/2"

DIN 3129

Médio - comprimento 50 mm.



Bitola	Sextavado	Estrela	Surface	Ø D 1	Ø D 2	P
8	3-S 8L	3-E 8L	3-C 8L	15,3	25,0	6,0
10	3-S 10L	3-E 10L	3-C 10L	17,8	25,0	7,0
11	3-S 11L	3-E 11L	3-C 11L	19,0	25,0	7,0
12	3-S 12L	3-E 12L	3-C 12L	20,3	25,0	7,0
13	3-S 13L	3-E13L	3-C13L	21,5	25,0	7,5
14	3-S 14L	3-E 14L	3-C 14L	22,8	25,0	8,0
15	3-S 15L	3-E 15L	3-C 15L	24,0	25,0	9,0
16	3-S 16L	3-E 16L	3-C 16L	25,0	25,0	10,0
17	3-S 17L	3-E 17L	3-C 17L	26,5	26,5	11,0
18	3-S 18L	3-E 18L	3-C 18L	28,0	28,0	12,0
19	3-S 19L	3-E 19L	3-C 19L	29,0	30,0	13,0
20	3-S 20L	3-E 20L	3-C 20L	31,0	30,0	13,0
22	3-S 22L	3-E 22L	3-C 22L	32,8	30,0	13,0
23	3-S 23L	3-E 23L	3-C 23L	35,0	30,0	13,0
24	3-S 24L	3-E 24L	3-C 24L	35,3	30,0	14,0
25	3-S 25L	3-E 25L	3-C 25L	38,0	30,0	14,0
27	3-S 27L	3-E 27L	3-C 27L	39,0	30,0	15,0
30	3-S 30L	3-E 30L	3-C 30L	42,8	30,0	18,0
32	3-S 32L	3-E 32L	3-C 32L	43,0	30,0	18
5/16"	3-S 5/16L	3-E 5/16L	3-C 5/16L	15,3	25,0	6,0
3/8"	3-S 3/8L	3-E 3/8L	3-C 3/8L	17,8	25,0	6,5
7/16"	3-S 7/16L	3-E 7/16L	3-C 7/16L	19,0	25,0	6,5
1/2"	3-S 1/2L	3-E 1/2L	3-C 1/2L	21,0	25,0	7,5
9/16"	3-S 9/16L	3-E 9/16L	3-C 9/16L	23,5	25,0	7,5
5/8"	3-S 5/8L	3-E 5/8L	3-C 5/8L	25,0	25,0	9,0
11/16"	3-S 11/16L	3-E 11/16L	3-C 11/16L	28,0	30,0	11,0
3/4"	3-S 3/4L	3-E 3/4L	3-C 3/4L	30,0	30,0	13,0
13/16"	3-S 13/16L	3-E 13/16L	3-C 13/16L	32,0	30,0	13,0
7/8"	3-S 7/8L	3-E 7/8L	3-C 7/8L	34,0	30,0	13,0
15/16"	3-S 15/16L	3-E 15/16L	3-C 15/16L	37,0	30,0	14,0
1"	3-S 1L	3-E 1L	3-C 1L	37,3	30,0	15,0
1.1/16"	3-S 1.1/16L	3-E 1.1/16L	3-C 1.1/16L	39,0	30,0	15,0
1.1/8"	3-S 1.1/8L	3-E 1.1/8L	3-C 1.1/8L	41,0	30,0	15,0
1.3/16"	3-S 1.3/16L	3-E 1.3/16L	3-C 1.3/16L	42,8	30,0	18,0
1.1/4"	3-S 1.1/4L	3-E 1.1/4L	3-C 1.1/4L	43,0	30,0	18,0

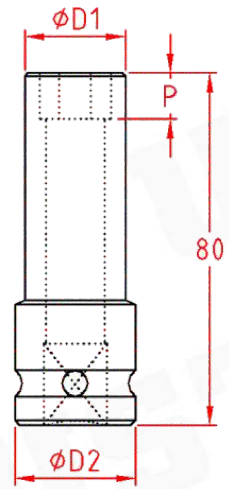
Fabricamos soquetes com imã e especiais.

As medidas podem sofrer alterações sem prévio aviso.

Soquete de Impacto □ 1/2"

DIN 3129

Longo - comprimento 80 mm.



Bitola	Sextavado	Estrela	Surface	Ø D 1	Ø D 2	P
8	3-S 8X	3-E 8X	3-C 8X	15,3	25,0	6,0
10	3-S 10X	3-E 10X	3-C 10X	17,8	25,0	7,0
11	3-S 11X	3-E 11X	3-C 11X	19,0	25,0	7,0
12	3-S 12X	3-E 12X	3-C 12X	20,3	25,0	7,0
13	3-S 13X	3-E13X	3-C13X	21,5	25,0	7,5
14	3-S 14X	3-E 14X	3-C 14X	22,8	25,0	8,0
15	3-S 15X	3-E 15X	3-C 15X	24,0	25,0	9,0
16	3-S 16X	3-E 16X	3-C 16X	25,0	25,0	10,0
17	3-S 17X	3-E 17X	3-C 17X	26,5	26,5	11,0
18	3-S 18X	3-E 18X	3-C 18X	28,0	30,0	12,0
19	3-S 19X	3-E 19X	3-C 19X	29,0	30,0	13,0
20	3-S 20X	3-E 20X	3-C 20X	31,0	30,0	13,0
22	3-S 22X	3-E 22X	3-C 22X	32,8	30,0	13,0
23	3-S 23X	3-E 23X	3-C 23X	35,0	30,0	13,0
24	3-S 24X	3-E 24X	3-C 24X	35,3	30,0	14,0
25	3-S 25X	3-E 25X	3-C 25X	38,0	30,0	14,0
27	3-S 27X	3-E 27X	3-C 27X	39,0	30,0	15,0
30	3-S 30X	3-E 30X	3-C 30X	42,8	30,0	18,0
32	3-S 32X	3-E 32X	3-C 32X	43,0	30,0	18
5/16"	3-S 5/16X	3-E 5/16X	3-C 5/16X	15,3	25,0	6,0
3/8"	3-S 3/8X	3-E 3/8X	3-C 3/8X	17,8	25,0	6,5
7/16"	3-S 7/16X	3-E 7/16X	3-C 7/16X	19,0	25,0	6,5
1/2"	3-S 1/2X	3-E 1/2X	3-C 1/2X	21,0	25,0	7,5
9/16"	3-S 9/16X	3-E 9/16X	3-C 9/16X	23,5	25,0	7,5
5/8"	3-S 5/8X	3-E 5/8X	3-C 5/8X	25,0	25,0	9,0
11/16"	3-S 11/16X	3-E 11/16X	3-C 11/16X	28,0	30,0	11,0
3/4"	3-S 3/4X	3-E 3/4X	3-C 3/4X	30,0	30,0	13,0
13/16"	3-S 13/16L	3-E 13/16X	3-C 13/16X	32,0	30,0	13,0
7/8"	3-S 7/8L	3-E 7/8X	3-C 7/8X	34,0	30,0	13,0
15/16"	3-S 15/16X	3-E 15/16X	3-C 15/16X	37,0	30,0	14,0
1"	3-S 1X	3-E 1X	3-C 1X	37,3	30,0	15,0
1.1/16"	3-S 1.1/16X	3-E 1.1/16X	3-C 1.1/16X	39,0	30,0	15,0
1.1/8"	3-S 1.1/8X	3-E 1.1/8X	3-C 1.1/8X	41,0	30,0	15,0
1.3/16"	3-S 1.3/16X	3-E 1.3/16X	3-C 1.3/16X	42,8	30,0	18,0
1.1/4"	3-S 1.1/4X	3-E1.1/4X	3-C1.1/4X	43,0	30,0	18,0

Fabricamos soquetes com imã e especiais.

As medidas podem sofrer alterações sem prévio aviso.

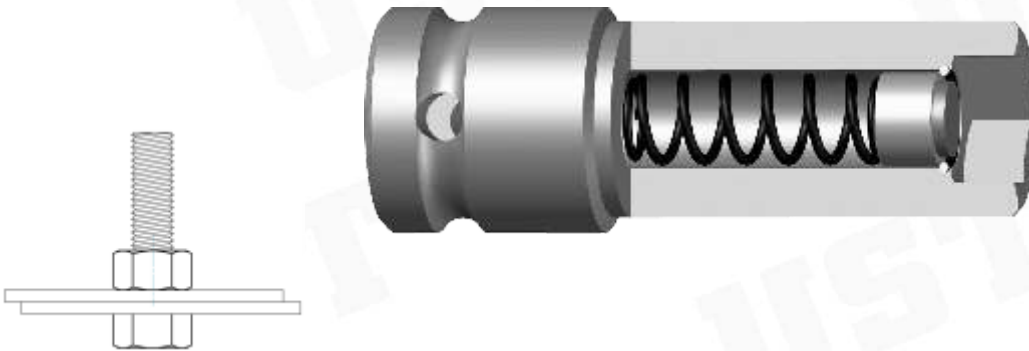
Soquete de Impacto □ 1/2"

DIN 3129

Com imã Retrátil

Para aplicações onde existe o excesso de parafuso ou prisioneiro.

Aplicação somente com porcas



Bitola	Comprimento 50 mm	Comprimento 80 mm
	Passagem 15 mm	Passagem 45 mm
8	3-S 8 L MR	3-S 8 X MR
9	3-S 9 L MR	3-S 9 X MR
10	3-S 10 L MR	3-S 10 X MR
11	3-S 11 L MR	3-S 11 X MR
12	3-S 12 L MR	3-S 12 X MR
13	3-S 13 L MR	3-S 13 X MR
14	3-S 14 L MR	3-S 14 X MR
15	3-S 15 L MR	3-S 15 X MR
16	3-S 16 L MR	3-S 16 X MR
17	3-S 17 L MR	3-S 17 X MR
18	3-S 18 L MR	3-S 18 X MR
19	3-S 19 L MR	3-S 19 X MR
5/16"	3-S 5/16 L MR	3-S 5/16 X MR
3/8"	3-S 3/8 L MR	3-S 3/8 X MR
7/16"	3-S 7/16 L MR	3-S 7/16 X MR
1/2"	3-S 1/2 L MR	3-S 1/2 X MR
9/16"	3-S 9/16 L MR	3-S 9/16 X MR
5/8"	3-S 5/8 L MR	3-S 5/8 X MR
11/16"	3-S 11/16 L MR	3-S 11/16 X MR
3/4"	3-S 3/4 L MR	3-S 3/4 X MR

Fabricamos soquetes com imã e especiais.

As medidas podem sofrer alterações sem prévio aviso.

Soquetes Longos

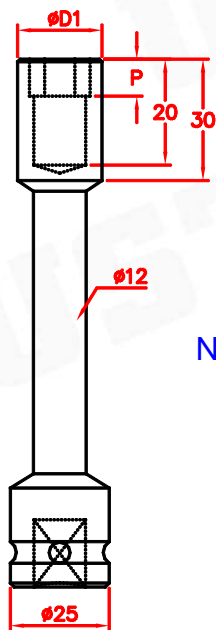
DIN 3129

Encaixe 1/2"



Sextavado	Comprimento					P	Ø D 1
	100	150	200	250	300		
8	L 3-S 8 100	L 3-S 8 150	L 3-S 8 200	L 3-S 8 250	L 3-S 8 300	8	13,0
10	L 3-S 10 100	L 3-S 10 150	L 3-S 10 200	L 3-S 10 250	L 3-S 10 300	10	16,0
11	L 3-S 11 100	L 3-S 11 150	L 3-S 11 200	L 3-S 11 250	L 3-S 11 300	12	18,0
12	L 3-S 12 100	L 3-S 12 150	L 3-S 12 200	L 3-S 12 250	L 3-S 12 300	12	20,0
13	L 3-S 13 100	L 3-S 13 150	L 3-S 13 200	L 3-S 13 250	L 3-S 13 300	12	21,0
14	L 3-S 14 100	L 3-S 14 150	L 3-S 14 200	L 3-S 14 250	L 3-S 14 300	12	22,0
15	L 3-S 15 100	L 3-S 15 150	L 3-S 15 200	L 3-S 15 250	L 3-S 15 300	12	24,0
16	L 3-S 16 100	L 3-S 16 150	L 3-S 16 200	L 3-S 16 250	L 3-S 16 300	13	25,0
17	L 3-S 17 100	L 3-S 17 150	L 3-S 17 200	L 3-S 17 250	L 3-S 17 300	15	26,5
18	L 3-S 18 100	L 3-S 18 150	L 3-S 18 200	L 3-S 18 250	L 3-S 18 300	15	26,5
19	L 3-S 19 100	L 3-S 19 150	L 3-S 19 200	L 3-S 19 250	L 3-S 19 300	15	28,0
21	L 3-S 21 100	L 3-S 21 150	L 3-S 21 200	L 3-S 21 250	L 3-S 21 300	15	31,0
22	L 3-S 22 100	L 3-S 22 150	L 3-S 22 200	L 3-S 22 250	L 3-S 22 300	15	32,0
24	L 3-S 24 100	L 3-S 24 150	L 3-S 24 200	L 3-S 24 250	L 3-S 24 300	15	35,0
25	L 3-S 25 100	L 3-S 25 150	L 3-S 25 200	L 3-S 25 250	L 3-S 25 300	15	37,0
27	L 3-S 27 100	L 3-S 27 150	L 3-S 27 200	L 3-S 27 250	L 3-S 27 300	15	38,0

Fabricamos soquetes em polegada e especiais.



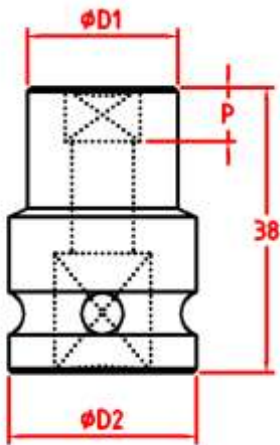
Norma DIN 3121 e 3129

As medidas podem sofrer alterações sem prévio aviso.

Soquete quadrado

DIN 3129

Encaixe 1/2"
Comprimento 38 mm.



Quadrado	Referência	Ø D 1	Ø D 2	P
8	3-Q 8	16	25	6
9	3-Q 9	18	25	6
10	3-Q 10	20	25	8
11	3-Q 11	22	25	8
12	3-Q 12	24	25	8
13	3-Q 13	25	25	8
14	3-Q 14	25	25	10
15	3-Q 15	26	26	11
16	3-Q 16	28	28	11
17	3-Q 17	32	32	11
18	3-Q 18	34	32	12
19	3-Q 19	35	32	12
20	3-Q 20	38	32	14
22	3-Q 22	42	32	14
25	3-Q 25	45	32	14
27	3-Q 27	49	32	16
28	3-Q 28	50	32	16
5/16"	3-Q 5/16	16	25	6
3/8"	3-Q 3/8	20	25	8
7/16"	3-Q 7/16	22	25	8
1/2"	3-Q 1/2	25	25	8
9/16"	3-Q 9/16	25	25	10
5/8"	3-Q 5/8	28	28	11
11/16"	3-Q 11/16	32	32	11
3/4"	3-Q 3/4	35	32	12
13/16"	3-Q 13/16	38	32	14
7/8"	3-Q 7/8	42	32	14
15/16"	3-Q 15/16	42	32	14
1"	3-Q 1	45	32	14
1.1/16"	3-Q 1.1/16	49	32	16
1.1/8"	3-Q 1.1/8	50	32	16

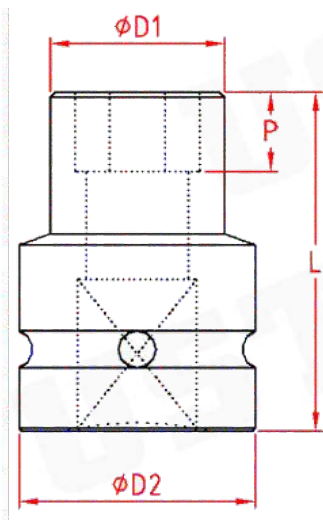
Fabricamos soquetes em polegada e especiais.

As medidas podem sofrer alterações sem prévio aviso.

Soquete de Impacto □ 3/4” Reforçado

DIN 3129

Curto - milímetros



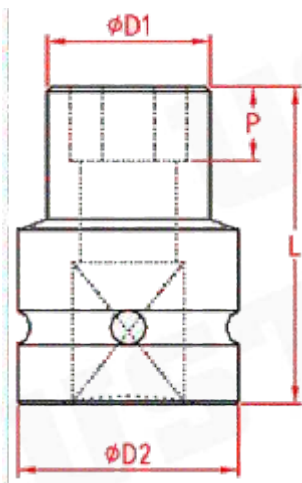
Bitola	Sextavado	Estrela	Ø D 1	Ø D 2	P	L
17	5-S 17R	5-E 17R	34,0	34,0	10	50
18	5-S 18R	5-E 18R	36,0	38,0	12	50
19	5-S 19R	5-E 19R	38,0	38,0	12	50
20	5-S 20R	5-E 20R	38,0	38,0	13	50
21	5-S 21R	5-E 21R	40,0	38,0	13	50
22	5-S 22R	5-E 22R	42,0	38,0	13	50
24	5-S 24R	5-E 24R	44,0	44,0	13	50
25	5-S 25R	5-E 25R	45,0	44,0	13	50
26	5-S 26R	5-E 26R	46,0	44,0	13	50
27	5-S 27R	5-E 27R	48,0	44,0	13	50
28	5-S 28R	5-E 28R	49,0	44,0	15	54
30	5-S 30R	5-E 30R	50,0	50,0	17	54
32	5-S 32R	5-E 32R	55,0	50,0	17	56
33	5-S 33R	5-E 33R	56,0	50,0	17	56
34	5-S 34R	5-E 34R	56,0	50,0	18	56
36	5-S 36R	5-E 36R	59,0	50,0	19	56
37	5-S 37R	5-E 37R	61,0	50,0	19	56
38	5-S 38R	5-E 38R	62,0	50,0	20	56
41	5-S 41R	5-E 41R	66,0	50,0	22	58
42	5-S 42R	5-E 42R	68,0	50,0	22	63
43	5-S 43R	5-E 43R	70,0	50,0	22	63
46	5-S 46R	5-E 46R	71,0	50,0	22	63
50	5-S 50R	5-E 50R	80,0	50,0	22	63
51	5-S 51R	5-E 51R	80,0	60,0	30	80
55	5-S 55R	5-E 55R	82,0	60,0	30	85
57	5-S 57R	5-E 57R	82,0	60,0	30	85
60	5-S 60R	5-E 60R	86,0	60,0	35	90
63	5-S 63R	5-E 63R	90,0	60,0	40	90
65	5-S 65R	5-E 65R	97,0	70,0	40	90
67	5-S 67R	5-E 67R	98,0	70,0	40	90
68	5-S 68R	5-E 68R	99,0	70,0	40	90
70	5-S 70R	5-E 70R	103,0	70,0	40	90
71	5-S 71R	5-E 71R	104,0	70,0	45	90
73	5-S 73R	5-E 73R	105,0	70,0	45	90
75	5-S 75R	5-E 75R	106,0	70,0	45	90

Fabricamos soquetes com imã e especiais.

As medidas podem sofrer alterações sem prévio aviso.

Soquete de Impacto □ 3/4" Reforçado

DIN 3129
Curto - polegadas



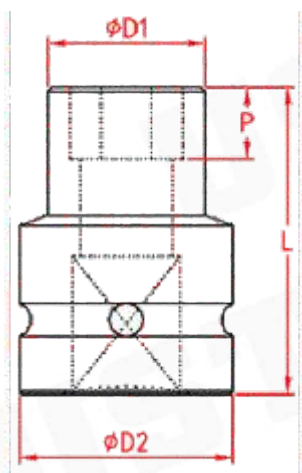
Bitola	Sextavado	Estrela	$\phi D 1$	$\phi D 2$	P	L
11/16"	5-S 11/16R	5-E 11/16R	34,0	34,0	10	50
3/4"	5-S 3/4R	5-E 3/4R	38,0	38,0	12	50
13/16"	5-S 13/16R	5-E 13/16R	38,0	38,0	13	50
7/8"	5-S 7/8R	5-E 7/8R	42,0	38,0	13	50
15/16"	5-S 15/16R	5-E 15/16R	44,0	44,0	13	50
1"	5-S 1R	5-E 1R	45,0	44,0	13	50
1.1/16"	5-S 1.1/16R	5-E 1.1/16R	48,0	44,0	13	50
1.1/8"	5-S 1.1/8R	5-E 1.1/8R	49,0	44,0	15	54
1.3/16"	5-S 1.3/16R	5-E 1.3/16R	50,0	50,0	17	54
1.1/4"	5-S 1.1/4R	5-E 1.1/4R	55,0	50,0	17	56
1.5/16"	5-S 1.5/16R	5-E 1.5/16R	56,0	50,0	17	56
1.3/8"	5-S 1.3/8R	5-E 1.3/8R	59,0	50,0	19	56
1.7/16"	5-S 1.7/16R	5-E 1.7/16R	61,0	50,0	19	56
1.1/2"	5-S 1-1/2R	5-E 1.1/2R	62,0	50,0	20	56
1.5/8"	5-S 1.5/8R	5-E 1.5/8R	66,0	50,0	22	58
1.3/4"	5-S 1.3/4R	5-E 1.3/4R	71,0	50,0	22	58
1.7/8"	5-S 1.7/8R	5-E 1.7/8R	73,0	50,0	22	63
1.15/16"	5-S 1.15/16R	5-E 1.15/16R	80,0	50,0	22	63
2"	5-S 2R	5-E 2R	80,0	50,0	22	63
2.1/8"	5-S 2.1/8R	5-E 2.1/8R	80,0	60,0	30	85
2.3/16"	5-S 2.3/16R	5-E 2.3/16R	82,0	60,0	30	85
2.1/4"	5-S 2.1/4R	5-E 2.1/4R	82,0	60,0	30	85
2.3/8"	5-S 2.3/8R	5-E 2.3/8R	86,0	60,0	35	90
2.1/2"	5-S 2.1/2R	5-E 2.1/2R	90,0	60,0	40	90
2.9/16"	5-S 2.9/16R	5-E 2.9/16R	97,0	70,0	40	90
2.5/8"	5-S 2.5/8R	5-E 2.5/8R	98,0	70,0	40	90
2.11/16"	5-S 2.11/16R	5-E 2.11/16R	99,0	70,0	40	90
2.3/4"	5-S 2.3/4R	5-E 2.3/4R	103,0	70,0	40	90
2.13/16"	5-S 2.13/16R	5-E 2.13/16R	104,0	70,0	40	90
2.7/8"	5-S 2.7/8R	5-E 2.7/8R	105,0	70,0	45	90
2.15/16"	5-S 2.15/16R	5-E 2.15/16R	105,0	70,0	45	90
3"	5-S 3R	5-E 3R	106,0	70,0	45	90

Fabricamos soquetes com imã e especiais.
As medidas podem sofrer alterações sem prévio aviso.

Soquete de Impacto □ 3/4"

DIN 3129

Curto - milímetros

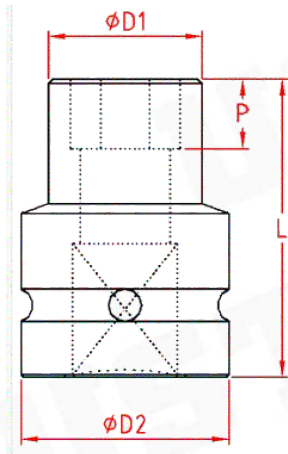


Bitola	Sextavado	Estrela	$\phi D 1$	$\phi D 2$	P	L
17	5-S 17	5-E 17	31,0	38,0	10	50
18	5-S 18	5-E 18	32,4	38,0	12	50
19	5-S 19	5-E 19	33,6	38,0	12	50
20	5-S 20	5-E 20	34,5	38,0	13	50
21	5-S 21	5-E 21	36,1	38,0	13	50
22	5-S 22	5-E 22	37,4	38,0	13	50
24	5-S 24	5-E 24	39,9	44,0	13	50
25	5-S 25	5-E 25	41,0	44,0	13	50
26	5-S 26	5-E 26	41,0	44,0	13	50
27	5-S 27	5-E 27	43,6	44,0	13	50
28	5-S 28	5-E 28	45,0	44,0	15	54
30	5-S 30	5-E 30	47,4	44,0	17	54
32	5-S 32	5-E 32	49,9	44,0	17	56
33	5-S 33	5-E 33	50,0	44,0	17	56
34	5-S 34	5-E 34	52,4	44,0	18	56
36	5-S 36	5-E 36	54,9	44,0	19	56
37	5-S 37	5-E 37	56,0	44,0	19	56
38	5-S 38	5-E 38	58,0	44,0	20	56
41	5-S 41	5-E 41	61,1	44,0	22	58
42	5-S 42	5-E 42	63,0	44,0	22	63
43	5-S 43	5-E 43	63,0	44,0	22	63
46	5-S 46	5-E 46	63,0	44,0	22	63
50	5-S 50	5-E 50	74,0	50,0	22	63
51	5-S 51	5-E 51	74,0	60,0	30	80
55	5-S 55	5-E 55	78,0	60,0	30	85
57	5-S 57	5-E 57	78,0	60,0	30	85
60	5-S 60	5-E 60	81,0	60,0	35	90
63	5-S 63	5-E 63	84,0	60,0	40	90
65	5-S 65	5-E 65	91,0	70,0	40	90
67	5-S 67	5-E 67	93,0	70,0	40	90
68	5-S 68	5-E 68	94,0	70,0	40	90
70	5-S 70	5-E 70	98,0	70,0	40	90
71	5-S 71	5-E 71	99,0	70,0	45	90
73	5-S 73	5-E 73	100,0	70,0	45	90
75	5-S 75	5-E 75	101,0	70,0	45	90

Soquete de Impacto □ 3/4"

DIN 3129

Curto - polegadas



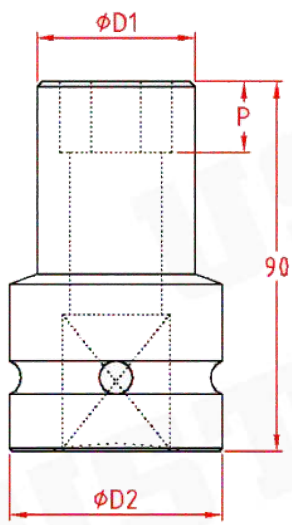
Bitola	Sextavado	Estrela	$\phi D 1$	$\phi D 2$	P	L
11/16"	5-S 11/16	5-E 11/16	31,0	38,0	10	50
3/4"	5-S 3/4	5-E 3/4	33,6	38,0	12	50
13/16"	5-S 13/16	5-E 13/16	34,5	38,0	13	50
7/8"	5-S 7/8	5-E 7/8	37,4	38,0	13	50
15/16"	5-S 15/16	5-E 15/16	39,9	44,0	13	50
1"	5-S 1	5-E 1	41,0	44,0	13	50
1.1/16"	5-S 1.1/16	5-E 1.1/16	43,6	44,0	13	50
1.1/8"	5-S 1.1/8	5-E 1.1/8	45,0	44,0	15	54
1.3/16"	5-S 1.3/16	5-E 1.3/16	47,4	44,0	17	54
1.1/4"	5-S 1.1/4	5-E 1.1/4	49,9	44,0	17	56
1.5/16"	5-S 1.5/16	5-E 1.5/16	50,0	44,0	17	56
1.3/8"	5-S 1.3/8	5-E 1.3/8	54,9	44,0	19	56
1.7/16"	5-S 1.7/16	5-E 1.7/16	56,0	44,0	19	56
1.1/2"	5-S 1-1/2	5-E 1.1/2	58,0	44,0	20	56
1.5/8"	5-S 1.5/8	5-E 1.5/8	61,1	44,0	22	58
1.3/4"	5-S 1.3/4	5-E 1.3/4	67,4	44,0	22	58
1.7/8"	5-S 1.7/8	5-E 1.7/8	67,4	44,0	22	63
1.15/16"	5-S 1.15/16	5-E 1.15/16	74,0	50,0	22	63
2"	5-S 2	5-E 2	74,0	50,0	22	63
2.1/8"	5-S 2.1/8	5-E 2.1/8	74,0	60,0	30	85
2.3/16"	5-S 2.3/16	5-E 2.3/16	78,0	60,0	30	85
2.1/4"	5-S 2.1/4	5-E 2.1/4	78,0	60,0	30	85
2.3/8"	5-S 2.3/8	5-E 2.3/8	81,0	60,0	35	90
2.1/2"	5-S 2.1/2	5-E 2.1/2	84,0	60,0	40	90
2.9/16"	5-S 2.9/16	5-E 2.9/16	91,0	70,0	40	90
2.5/8"	5-S 2.5/8	5-E 2.5/8	93,0	70,0	40	90
2.11/16"	5-S 2.11/16	5-E 2.11/16	94,0	70,0	40	90
2.3/4"	5-S 2.3/4	5-E 2.3/4	98,0	70,0	40	90
2.13/16"	5-S 2.13/16	5-E 2.13/16	99,0	70,0	45	90
2.7/8"	5-S 2.7/8	5-E 2.7/8	100,0	70,0	45	90
2.15/16"	5-S 2.15/16	5-E 2.15/16	100,0	70,0	45	90
3"	5-S 3	5-E 3	101,0	70,0	45	90

As medidas podem sofrer alterações sem prévio aviso.

Soquete de Impacto □ 3/4"

DIN 3129

Longo - comprimento 90 mm



Bitola	Sextavado	Estrela	Ø D 1	Ø D 2	P
17	5-S 17L	5-E 17L	31,0	38,0	10
18	5-S 18L	5-E 18L	32,4	38,0	12
19	5-S 19L	5-E 19L	33,6	38,0	12
20	5-S 20L	5-E 20L	34,5	38,0	13
21	5-S 21L	5-E 21L	36,1	38,0	13
22	5-S 22L	5-E 22L	37,4	38,0	13
24	5-S 24L	5-E 24L	39,9	44,0	13
25	5-S 25L	5-E 25L	41,0	44,0	13
26	5-S 26L	5-E 26L	41,0	44,0	13
27	5-S 27L	5-E 27L	43,6	44,0	13
28	5-S 28L	5-E 28L	45,0	44,0	15
30	5-S 30L	5-E 30L	47,4	44,0	17
32	5-S 32L	5-E 32L	49,9	44,0	17
33	5-S 33L	5-E 33L	50,0	44,0	17
34	5-S 34L	5-E 34L	52,4	44,0	18
36	5-S 36L	5-E 36L	54,9	44,0	19
37	5-S 37L	5-E 37L	56,0	44,0	19
38	5-S 38L	5-E 38L	58,0	44,0	20
41	5-S 41L	5-E 41L	61,1	44,0	22
11/16"	5-S 11/16L	5-E 11/16L	31,0	38,0	10
3/4"	5-S 3/4L	5-E 3/4L	33,6	38,0	12
13/16"	5-S 13/16L	5-E 13/16L	34,5	38,0	13
7/8"	5-S 7/8L	5-E 7/8L	37,4	38,0	13
15/16"	5-S 15/16L	5-E 15/16L	39,9	44,0	13
1"	5-S 1L	5-E 1L	41,0	44,0	13
1.1/16"	5-S 1.1/16L	5-E 1.1/16L	43,6	44,0	13
1.1/8"	5-S 1.1/8L	5-E 1.1/8L	45,0	44,0	15
1.3/16"	5-S 1.3/16L	5-E 1.3/16L	47,4	44,0	17
1.1/4"	5-S 1.1/4L	5-E 1.1/4L	49,9	44,0	17
1.5/16"	5-S 1.5/16L	5-E 1.5/16L	50,0	44,0	17
1.3/8"	5-S 1.3/8L	5-E 1.3/8L	54,9	44,0	19
1.7/16"	5-S 1.7/16L	5-E 1.7/16L	56,0	44,0	19
1.1/2"	5-S 1.1/2L	5-E 1.1/2L	58,0	44,0	20
1.5/8"	5-S 1.5/8L	5-E 1.5/8L	61,1	44,0	22
1.3/4"	5-S 1.3/4L	5-E 1.3/4L	67,4	44,0	26

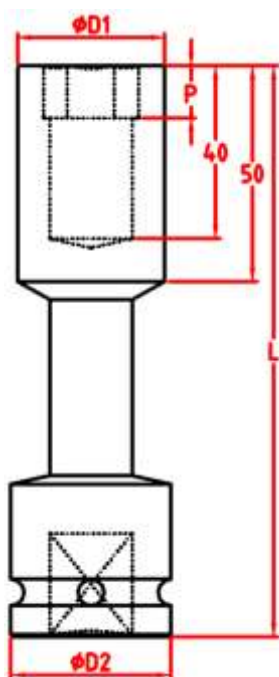
Fabricamos soquetes com imã e especiais.

As medidas podem sofrer alterações sem prévio aviso.

Soquetes Longos

DIN 3129

Encaixe 3/4"



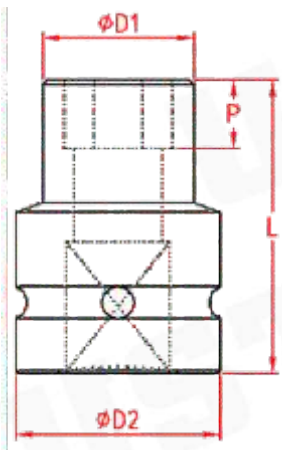
Sextavado	Comprimento			Ø D1	Ø D2	P
	150	200	250			
19	L 5-S 19 150	L 5-S 19 200	L 5-S 19 250	34	38	12
20	L 5-S 20 150	L 5-S 20 200	L 5-S 20 250	34,5	38	15
21	L 5-S 21 150	L 5-S 21 200	L 5-S 21 250	36	38	15
22	L 5-S 22 150	L 5-S 22 200	L 5-S 22 250	38	38	15
24	L 5-S 24 150	L 5-S 24 200	L 5-S 24 250	40	44	17
25	L 5-S 25 150	L 5-S 25 200	L 5-S 25 250	41	44	17
27	L 5-S 27 150	L 5-S 27 200	L 5-S 27 250	44	44	20
28	L 5-S 28 150	L 5-S 28 200	L 5-S 28 250	44	44	20
30	L 5-S 30 150	L 5-S 30 200	L 5-S 30 250	47,4	44	20
32	L 5-S 32 150	L 5-S 32 200	L 5-S 32 250	49,9	44	20
33	L 5-S 33 150	L 5-S 33 200	L 5-S 33 250	50	44	20
34	L 5-S 34 150	L 5-S 34 200	L 5-S 34 250	52,4	44	20
36	L 5-S 36 150	L 5-S 36 200	L 5-S 36 250	54,9	44	20
37	L 5-S 37 150	L 5-S 37 200	L 5-S 37 250	56	44	20
38	L 5-S 38 150	L 5-S 38 200	L 5-S 38 250	57	44	20
40	L 5-S 40 150	L 5-S 40 200	L 5-S 40 250	59	44	20
3/4"	L 5-S 3/4 150	L 5-S 3/4 200	L 5-S 3/4 250	34	38	12
13/16"	L 5-S 13/16 150	L 5-S 13/16 200	L 5-S 13/16 250	34,5	38	15
7/8"	L 5-S 7/8 150	L 5-S 7/8 200	L 5-S 7/8 250	38	38	15
15/16"	L 5-S 15/16 150	L 5-S 15/16 200	L 5-S 15/16 250	40	44	17
1"	L 5-S 1 150	L 5-S 1 200	L 5-S 1 250	41	44	17
1.1/8"	L 5-S 1.1/8 150	L 5-S 1.1/8 200	L 5-S 1.1/8 250	44	44	20
1.1/4"	L 5-S 1.1/4 150	L 5-S 1.1/4 200	L 5-S 1.1/4 250	49,9	44	20
1.3/8"	L 5-S 1.3/8 150	L 5-S 1.3/8 200	L 5-S 1.3/8 250	54,9	44	20
1.7/16"	L 5-S 1.7/16 150	L 5-S 1.7/16 200	L 5-S 1.7/16 250	56	44	20
1.1/2"	L 5-S 1.1/2 150	L 5-S 1.1/2 200	L 5-S 1.1/2 250	57	44	20
1.9/16"	L 5-S 1.9/16 150	L 5-S 1.9/16 200	L 5-S 1.9/16 250	59	44	20

Fabricamos soquetes especiais.

As medidas podem sofrer alterações sem prévio aviso.

Soquete de Impacto □ 1" Reforçado

DIN 3129
Curto - polegadas

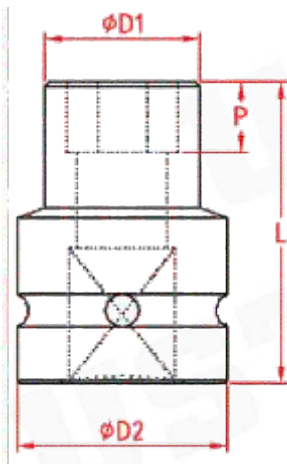


Bitola	Sextavado	Estrela	$\phi D 1$	$\phi D 2$	P	L
3/4"	6-S 3/4R	6-E 3/4R	39	50	12	55
13/16"	6-S 13/16R	6-E 13/16R	41	50	14	55
7/8"	6-S 7/8R	6-E 7/8R	43	50	14	55
15/16"	6-S 15/16R	6-E 15/16R	45	50	15	55
1"	6-S 1R	6-E 1R	46	50	16	55
1.1/16"	6-S 1.1/16R	6-E 1.1/16R	48	50	18	55
1.1/8"	6-S 1.1/8R	6-E 1.1/8R	50	50	22	62
1.3/16"	6-S 1.3/16R	6-E 1.3/16R	55	50	22	62
1.1/4"	6-S 1.1/4R	6-E 1.1/4R	55	50	22	62
1.5/16"	6-S 1.5/16R	6-E 1.5/16R	57	60	22	62
1.3/8"	6-S 1.3/8R	6-E 1.3/8R	61	60	22	62
1.7/16"	6-S 1.7/16R	6-E 1.7/16R	62	60	22	62
1.1/2"	6-S 1-1/2R	6-E 1.1/2R	62	60	24	64
1.5/8"	6-S 1.5/8R	6-E 1.5/8R	68	60	24	64
1.3/4"	6-S 1.3/4R	6-E 1.3/4R	75	65	25	69
1.13/16"	6-S 1.13/16R	6-E 1.13/16R	75	65	25	69
1.7/8"	6-S 1.7/8R	6-E 1.7/8R	75	65	25	69
1.15/16"	6-S 1.15/16R	6-E 1.15/16R	80	65	25	69
2"	6-S 2R	6-E 2R	81	65	25	69

Fabricamos soquetes com imã e especiais.
As medidas podem sofrer alterações sem prévio aviso.

Soquete de Impacto □ 1" Reforçado

DIN 3129
Curto - milímetros



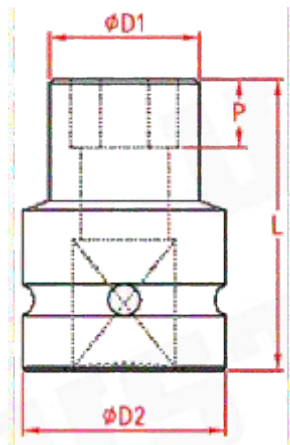
Medida	Sextavado	Estrela	$\phi D 1$	$\phi D 2$	P	L
19	6-S 19R	6-E 19R	39	50	12	55
20	6-S 20R	6-E 20R	40	50	13	55
21	6-S 21R	6-E 21R	41	50	14	55
22	6-S 22R	6-E 22R	43	50	14	55
23	6-S 23R	6-E 23R	44	50	15	55
24	6-S 24R	6-E 24R	45	50	15	55
25	6-S 25R	6-E 25R	46	50	16	55
26	6-S 26R	6-E 26R	47	50	16	55
27	6-S 27R	6-E 27R	48	50	18	55
28	6-S 28R	6-E 28R	49	50	20	55
29	6-S 29R	6-E 29R	50	50	22	62
30	6-S 30R	6-E 30R	55	50	22	62
32	6-S 32R	6-E 32R	55	50	22	62
33	6-S 33R	6-E 33R	57	60	22	62
34	6-S 34R	6-E 34R	59	60	22	62
35	6-S 35R	6-E 35R	61	60	22	62
36	6-S 36R	6-E 36R	61	60	22	62
37	6-S 37R	6-E 37R	62	60	22	62
38	6-S 38R	6-E 38R	62	60	24	64
40	6-S 40R	6-E 40R	65	60	24	64
41	6-S 41R	6-E 41R	68	60	24	64
42	6-S 42R	6-E 42R	69	60	24	64
46	6-S 46R	6-E 46R	75	65	25	69
50	6-S 50R	6-E 50R	81	65	25	69

Fabricamos soquetes com imã e especiais.
As medidas podem sofrer alterações sem prévio aviso.

Soquete de Impacto □ 1"

DIN 3129

Curto - milímetros



Medida	Sextavado	Estrela	$\phi D 1$	$\phi D 2$	P	L
19	6-S 19	6-E 19	34,0	50,0	12	55
20	6-S 20	6-E 20	35,0	50,0	13	55
21	6-S 21	6-E 21	36,0	50,0	14	55
22	6-S 22	6-E 22	38,0	50,0	14	55
23	6-S 23	6-E 23	39,0	50,0	15	55
24	6-S 24	6-E 24	41,0	50,0	15	55
25	6-S 25	6-E 25	42,0	50,0	16	55
26	6-S 26	6-E 26	42,0	50,0	16	55
27	6-S 27	6-E 27	43,0	50,0	16	55
28	6-S 28	6-E 28	44,0	50,0	16	55
29	6-S 29	6-E 29	47,0	50,0	18	62
30	6-S 30	6-E 30	50,0	50,0	18	62
32	6-S 32	6-E 32	50,0	54,0	20	62
33	6-S 33	6-E 33	52,0	54,0	20	62
34	6-S 34	6-E 34	54,0	54,0	20	62
35	6-S 35	6-E 35	54,0	54,0	20	62
36	6-S 36	6-E 36	56,0	54,0	20	62
37	6-S 37	6-E 37	57,0	54,0	20	62
38	6-S 38	6-E 38	59,0	54,0	20	64
40	6-S 40	6-E 40	60,0	54,0	20	64
41	6-S 41	6-E 41	63,0	54,0	20	64
42	6-S 42	6-E 42	64,0	54,0	22	64
46	6-S 46	6-E 46	70,0	64,0	23	69
50	6-S 50	6-E 50	75,4	64,0	26	70
51	6-S 51	6-E 51	76,0	64,0	30	85
55	6-S 55	6-E 55	82,0	64,0	30	85
57	6-S 57	6-E 57	82,0	64,0	30	85
60	6-S 60	6-E 60	86,0	64,0	35	90
63	6-S 63	6-E 63	90,0	70,0	40	90
65	6-S 65	6-E 65	97,0	70,0	40	90
67	6-S 67	6-E 67	98,0	70,0	40	90
68	6-S 68	6-E 68	99,0	70,0	40	90
70	6-S 70	6-E 70	103,0	70,0	40	90
71	6-S 71	6-E 71	104,0	70,0	45	100
73	6-S 73	6-E 73	105,0	70,0	45	100
75	6-S 75	6-E 75	106,0	70,0	45	100
78	6-S 78	6-E 78	110,0	70,0	45	100
80	6-S 80	6-E 80	113,0	110,0	45	100

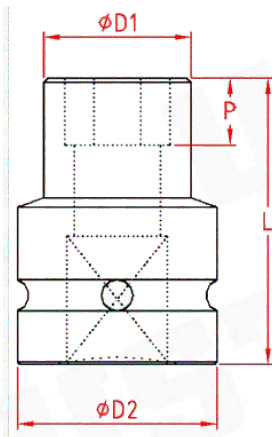
Fabricamos soquetes com imã e especiais.

As medidas podem sofrer alterações sem prévio aviso.

Soquete de Impacto □ 1"

DIN 3129

Curto - polegadas



Medida	Sextavado	Estrela	$\phi D 1$	$\phi D 2$	P	L
3/4"	6-S 3/4	6-E 3/4	34,0	50,0	12	55
13/16"	6-S 13/16	6-E 13/16	36,0	50,0	13	55
7/8"	6-S 7/8	6-E 7/8	38,0	50,0	14	55
15/16"	6-S 15/16	6-E 15/16	41,0	50,0	14	55
1"	6-S 1	6-E 1	42,0	50,0	15	55
1.1/6"	6-S 1.1/16	6-E 1.1/16	43,0	50,0	15	55
1.1/8"	6-S 1.1/8	6-E 1.1/8	47,0	50,0	16	62
1.3/16"	6-S 1.3/16	6-E 1.3/16	50,0	50,0	16	62
1.1/4"	6-S 1.1/4	6-E 1.1/4	50,0	54,0	16	62
1.5/16"	6-S 1.5/16	6-E 1.5/16	52,0	54,0	16	62
1.3/8"	6-S 1.3/8	6-E 1.3/8	54,0	54,0	18	62
1.7/16"	6-S 1.7/16	6-E 1.7/16	57,0	54,0	18	62
1.1/2"	6-S 1.1/2	6-E 1.1/2	59,0	54,0	20	64
1.9/16"	6-S 1.9/16	6-E 1.9/16	60,0	54,0	20	64
1.5/8"	6-S 1.5/8	6-E 1.5/8	63,0	54,0	20	64
1.11/16"	6-S 1.11/16	6-E 1.11/16	64,0	54,0	22	64
1.3/4"	6-S 1.3/4	6-E 1.3/4	70,0	64,0	22	69
1.7/8"	6-S 1.7/8	6-E 1.7/8	73,0	64,0	26	70
2"	6-S 2	6-E 2	75,4	64,0	26	70
2.1/8"	6-S 2.1/8	6-E 2.1/8	80,0	64,0	30	85
2.3/16"	6-S 2.3/16	6-E 2.3/16	82,0	64,0	30	85
2.1/4"	6-S 2.1/4	6-E 2.1/4	82,0	64,0	30	85
2.3/8"	6-S 2.3/8	6-E 2.3/8	86,0	64,0	35	90
2.1/2"	6-S 2.1/2	6-E 2.1/2	90,0	64,0	40	90
2.9/16"	6-S 2.9/16	6-E 2.9/16	97,0	70,0	40	90
2.5/8"	6-S 2.5/8	6-E 2.5/8	98,0	70,0	40	90
2.11/16"	6-S 2.11/16	6-E 2.11/16	99,0	70,0	40	90
2.3/4"	6-S 2.3/4	6-E 2.3/4	103,0	70,0	40	90
2.13/16"	6-S 2.13/16	6-E 2.13/16	104,0	70,0	40	100
2.7/8"	6-S 2.7/8	6-E 2.7/8	105,0	70,0	45	100
2.15/16"	6-S 2.15/16	6-E 2.15/16	105,0	70,0	45	100
3"	6-S 3	6-E 3	106,0	70,0	45	100

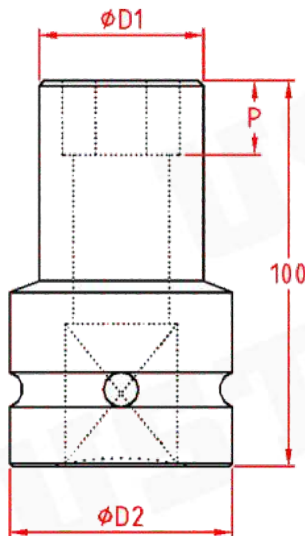
Fabricamos soquetes com imã e especiais.

As medidas podem sofrer alterações sem prévio aviso.

Soquete de Impacto □ 1"

DIN 3129

Longo - comprimento 100 mm



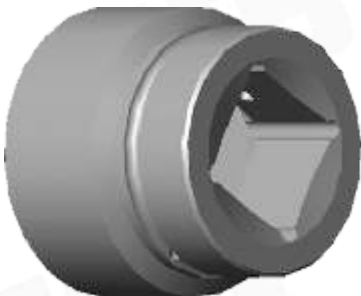
Medida	Sextavado	Estrela	Ø D 1	Ø D 2	P
19	6-S 19L	6-E 19L	34,0	50,0	12
20	6-S 20L	6-E 20L	35,0	50,0	13
21	6-S 21L	6-E 21L	36,0	50,0	14
22	6-S 22L	6-E 22L	38,0	50,0	14
23	6-S 23L	6-E 23L	39,0	50,0	15
24	6-S 24L	6-E 24L	41,0	50,0	15
25	6-S 25L	6-E 25L	42,0	50,0	16
26	6-S 26L	6-E 26L	42,0	50,0	16
27	6-S 27L	6-E 27L	43,0	50,0	16
28	6-S 28L	6-E 28L	44,0	50,0	16
29	6-S 29L	6-E 29L	47,0	50,0	18
30	6-S 30L	6-E 30L	50,0	50,0	18
32	6-S 32L	6-E 32L	50,0	54,0	20
33	6-S 33L	6-E 33L	52,0	54,0	20
34	6-S 34L	6-E 34L	54,0	54,0	20
35	6-S 35L	6-E 35L	54,0	54,0	20
36	6-S 36L	6-E 36L	56,0	54,0	20
37	6-S 37L	6-E 37L	57,0	54,0	20
38	6-S 38L	6-E 38L	59,0	54,0	20
40	6-S 40L	6-E 40L	60,0	54,0	20
41	6-S 41L	6-E 41L	63,0	54,0	20
42	6-S 42L	6-E 42L	64,0	54,0	22
46	6-S 46L	6-E 46L	70,0	64,0	23
50	6-S 50L	6-E 50L	75,4	64,0	26
3/4"	6-S 3/4L	6-E 3/4L	34,0	50,0	12
13/16"	6-S 13/16L	6-E 13/16L	36,0	50,0	13
7/8"	6-S 7/8L	6-E 7/8L	38,0	50,0	14
15/16"	6-S 15/16L	6-E 15/16L	41,0	50,0	14
1"	6-S 1L	6-E 1L	42,0	50,0	15
1.1/6"	6-S 1.1/16L	6-E 1.1/16L	43,0	50,0	15
1.1/8"	6-S 1.1/8L	6-E 1.1/8L	47,0	50,0	16
1.3/16"	6-S 1.3/16L	6-E 1.3/16L	50,0	50,0	16
1.1/4"	6-S 1.1/4L	6-E 1.1/4L	50,0	54,0	16
1.5/16"	6-S 1.5/16L	6-E 1.5/16L	52,0	54,0	16
1.3/8"	6-S 1.3/8L	6-E 1.3/8L	54,0	54,0	18
1.7/16"	6-S 1.7/16L	6-E 1.7/16L	57,0	54,0	18
1.1/2"	6-S 1.1/2L	6-E 1.1/2L	59,0	54,0	20
1.9/16"	6-S 1.9/16L	6-E 1.9/16L	60,0	54,0	20
1.5/8"	6-S 1.5/8L	6-E 1.5/8L	63,0	54,0	20
1.11/16"	6-S 1.11/16L	6-E 1.11/16L	64,0	54,0	22
1.3/4"	6-S 1.3/4L	6-E 1.3/4L	70,0	64,0	22
1.7/8"	6-S 1.7/8L	6-E 1.7/8L	73,0	64,0	26
2"	6-S 2L	6-E 2L	75,4	64,0	26

Fabricamos soquetes com imã e especiais.
As medidas podem sofrer alterações sem prévio aviso.

Soquete □ 1.1/2"



DIN 3129



Sextavado	Sextavado	Estrela	Comprimento
41	7S 41	7E 41	80
42	7S 42	7E 42	80
46	7S 46	7E 46	84
47	7S 47	7E 47	84
48	7S 48	7E 48	84
50	7S 50	7E 50	87
55	7S 55	7E 55	90
60	7S 60	7E 60	95
65	7S 65	7E 65	100
70	7S 70	7E 70	105
75	7S 75	7E 75	110
80	7S 80	7E 80	116
85	7S 85	7E 85	120
90	7S 90	7E 90	120
95	7S 95	7E 95	120
100	7S 100	7E 100	120
105	7S 105		120
110	7S 110		120
115	7S 115		120
120	7S 120		120
125	7S 125		125
130	7S 130		125
135	7S 135		125
140	7S 140		125
145	7S 145		125
1.5/8"	7S 1.5/8	7E 1.5/8	80
1.3/4"	7S 1.3/4	7E 1.3/4	84
1.7/8"	7S 1.7/8	7E 1.7/8	84
2"	7S 2	7E 2	87
2.1/8"	7S 2.1/8	7E 2.1/8	87
2.1/4"	7S 2.1/4	7E 2.1/4	90
2.3/8"	7S 2.3/8	7E 2.3/8	95
2.1/2"	7S 2.1/2	7E 2.1/2	95
2.5/8"	7S 2.5/8	7E 2.5/8	100
2.3/4"	7S 2.3/4	7E 2.3/4	105
3"	7S 3	7E 3	110
3.1/2"	7S 3.1/2	7E 3.1/2	120
4"	7S 4	7E 4	120
4.1/2"	7S 4.1/2		120
5"	7S 5		125
5.1/2"	7S 5.1/2		125

As medidas podem sofrer alterações sem prévio aviso.
Fabricamos medidas que não constam nesta tabela.

Soquete □ 2.1/2"



DIN 3129



Sextavado	Sextavado	Estrela	Comprimento
50	8S 50	8E 50	90
55	8S 55	8E 55	95
60	8S 60	8E 60	100
65	8S 65	8E 65	105
70	8S 70	8E 70	105
75	8S 75	8E 75	110
80	8S 80	8E 80	116
85	8S 85	8E 85	120
90	8S 90	8E 90	120
95	8S 95	8E 95	120
100	8S 100	8E 100	120
105	8S 105		120
110	8S 110		137
115	8S 115		137
120	8S 120		137
125	8S 125		137
130	8S 130		137
135	8S 135		142
140	8S 140		142
145	8S 145		142
150	8S 150		142
155	8S 155		142
2"	8S 2	8E 2	90
2.1/8"	8S 2.1/8	8E 2.1/8	90
2.1/4"	8S 2.1/4	8E 2.1/4	95
2.3/8"	8S 2.3/8	8E 2.3/8	100
2.1/2"	8S 2.1/2	8E 2.1/2	100
2.5/8"	8S 2.5/8	8E 2.5/8	105
2.3/4"	8S 3.3/4	8E 3.3/4	105
3"	8S 3	8E 3	110
3.1/2"	8S 3.1/2	8E 3.1/2	120
4"	8S 4	8E 4	120
4.1/2"	8S 4.1/2		137
5"	8S 5		137
5.1/2"	8S 5.1/2		142
6"	8S 6		142

As medidas podem sofrer alterações sem prévio aviso.
Fabricamos medidas que não constam nesta tabela.

Soquete Phillips

DIN 3129 e 5260



Encaixe □ 1/4"
Compr. 39 mm.

Nº	Ref.
0	SP 10
1	SP 11
2	SP 12
3	SP 13

Encaixe □ 3/8"
Compr. 55 mm.

Nº	Ref.
1	SP 2 1
2	SP 2 2
3	SP 2 3
4	SP 2 4

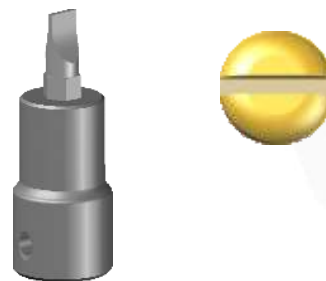
Encaixe □ 1/2"
Compr. 60 mm.

Nº	Ref.
1	SP 3 1
2	SP 3 2
3	SP 3 3
4	SP 3 4

Não utilizar com máquina de impacto.
É importante a regulagem do torque para cada aplicação.

Soquete Fenda

DIN 3127 e 5264



Encaixe □ 1/4"
Compr. 39 mm.

Ø x Esp.	Ref.
3 x 0,5	SF 13
4 x 0,7	SF 14
5 x 0,8	SF 15
6 x 1,0	SF 16
7 x 1,1	SF 17
8 x 1,2	SF 18

Encaixe □ 3/8"
Compr. 60 mm.

Ø x Esp.	Ref.
4 x 0,7	SF 2 4
5 x 0,8	SF 2 5
6 x 1,0	SF 2 6
7 x 1,1	SF 2 7
8 x 1,2	SF 2 8
9 x 1,2	SF 2 9
10 x 1,4	SF 2 10

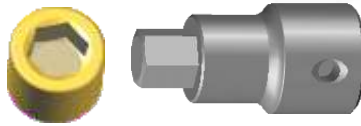
Encaixe □ 1/2"
Compr. 64 mm.

Ø x Esp.	Ref.
7 x 1,1	SF 3 7
8 x 1,2	SF 3 8
9 x 1,2	SF 3 9
10 x 1,4	SF 3 10
11 x 1,5	SF 3 11
12 x 1,9	SF 3 12
14 x 2,3	SF 3 14
16 x 2,5	SF 3 16

Não utilizar com máquina de impacto.
É importante a regulagem do torque para cada aplicação.

Soquete Allen

DIN 3129 e 7426



Encaixe □ 1/4"
Compr. 37 mm.

Allen	Ref.	Torque N.m
3,0	SA 1 3	2,4
4,0	SA 1 4	5,6
5,0	SA 1 5	11,0
6,0	SA 1 6	19,1
1/8"	SA 1 1/8	2,8
5/32"	SA 1 5/32	5,5
3/16"	SA 1 3/16	9,5
7/32"	SA 1 7/32	15,1
1/4"	SA 1 1/4	22,7

Encaixe □ 3/8"
Compr. 48 mm.

Allen	Ref.	Torque N.m
4	SA 2 4	5,6
5	SA 2 5	11,0
6	SA 2 6	19,1
7	SA 2 7	30,4
8	SA 2 8	45,4
10	SA 2 10	88,7
5/32"	SA 2 5/32	5,5
3/16"	SA 2 3/16	9,5
7/32"	SA 2 7/32	15,1
1/4"	SA 2 1/4	22,7
5/16"	SA 2 5/16	44,7
3/8"	SA 2 3/8	76,5

Encaixe □ 1/2"



Allen	Compr.50mm	Compr.100mm	Torque N.m
8	SA 3 8	SA 3 8 100	45,4
10	SA 3 10	SA 3 10 100	88,7
11	SA 3 11	SA 3 11 100	118,1
12	SA 3 12	SA 3 12 100	153,3
13	SA 3 13	SA 3 13 100	194,9
14	SA 3 14	SA 3 14 100	243,4
15	SA 3 15	SA 3 15 100	299,4
16	SA 3 16	SA 3 16 100	363,4
17	SA 3 17	SA 3 17 100	435,8
18	SA 3 18	SA 3 18 100	517,4
19	SA 3 19	SA 3 19 100	608,5
20	SA 3 20	SA 3 20 100	709,7
22	SA 3 22	SA 3 22 100	944,6
24	SA 3 24	SA 3 24 100	1226,4
25	SA 3 25	SA 3 25 100	1386,2
27	SA 3 27	SA 3 27 100	1746,2
30	SA 3 30	SA 3 30 100	2395,3

Allen	Compr.50mm	Compr.100mm	Torque N.m
5/16"	SA 3 5/16	SA 3 5/16 100	44,7
3/8"	SA 3 3/8	SA 3 3/8 100	76,5
7/16"	SA 3 7/16	SA 3 7/16 100	121,3
1/2"	SA 3 1/2	SA 3 1/2 100	181,7
9/16"	SA 3 9/16	SA 3 9/16 100	254,0
5/8"	SA 3 5/8	SA 3 5/8 100	349,9
11/16"	SA 3 11/16	SA 3 11/16 100	453,0
3/4"	SA 3 3/4	SA 3 3/4 100	613,3
13/16"	SA 3 13/16	SA 3 13/16 100	778,9
7/8"	SA 3 7/8	SA 3 7/8 100	973,2
15/16"	SA 3 15/16	SA 3 15/16 100	1197,5
1"	SA 3 1	SA 3 1 100	1453,8

Fabricamos medidas especiais.

Não utilizar com máquina de impacto.

É importante a regulação do torque de acordo com a medida do soquete.

As medidas podem sofrer alterações sem prévio aviso.

Soquete Allen abaulado

DIN 3129 e 7426

Encaixe □ 3/8"
Compr. 48 mm.



Allen	Ref.	Torque N.m
6	SAB 2 6	14,9
7	SAB 2 7	23,7
8	SAB 2 8	35,4
10	SAB 2 10	69,2
1/4"	SAB 2 1/4	17,7
5/16"	SAB 2 5/16	34,9
3/8"	SAB 2 3/8	59,7

É importante a regulagem do torque de acordo com a medida do soquete.



Encaixe □ 1/2"

Allen	Compr.50mm	Compr.100mm	Torque N.m
8	SAB 3 8	SAB 3 8 100	35,4
10	SAB 3 10	SAB 3 10 100	69,2
11	SAB 3 11	SAB 3 11 100	92,1
12	SAB 3 12	SAB 3 12 100	119,6
13	SAB 3 13	SAB 3 13 100	152,0
14	SAB 3 14	SAB 3 14 100	189,9
15	SAB 3 15	SAB 3 15 100	233,5
16	SAB 3 16	SAB 3 16 100	283,4
17	SAB 3 17	SAB 3 17 100	339,9
18	SAB 3 18	SAB 3 18 100	403,5
19	SAB 3 19	SAB 3 19 100	474,6
20	SAB 3 20	SAB 3 20 100	553,5
22	SAB 3 22	SAB 3 22 100	736,8
24	SAB 3 24	SAB 3 24 100	956,6
25	SAB 3 25	SAB 3 25 100	1081,2
27	SAB 3 27	SAB 3 27 100	1362,0
30	SAB 3 30	SAB 3 30 100	1868,3



Allen	Compr.50mm	Compr.100mm	Torque N.m
5/16"	SAB 3 5/16	SAB 3 5/16 100	34,9
3/8"	SAB 3 3/8	SAB 3 3/8 100	59,7
7/16"	SAB 3 7/16	SAB 3 7/16 100	94,6
1/2"	SAB 3 1/2	SAB 3 1/2 100	141,7
9/16"	SAB 3 9/16	SAB 3 9/16 100	198,1
5/8"	SAB 3 5/8	SAB 3 5/8 100	272,9
11/16"	SAB 3 11/16	SAB 3 11/16 100	357,0
3/4"	SAB 3 3/4	SAB 3 3/4 100	478,3
13/16"	SAB 3 13/16	SAB 3 13/16 100	607,5
7/8"	SAB 3 7/8	SAB 3 7/8 100	759,1
15/16"	SAB 3 15/16	SAB 3 15/16 100	932,8
1"	SAB 3 1	SAB 3 1 100	1133,9

É importante a regulagem do torque de acordo com a medida do soquete.

Fabricamos medidas especiais.

Não utilizar com máquina de impacto.

As medidas podem sofrer alterações sem prévio aviso.

Soquete Allen

Encaixe □ 3/4"

DIN 3129 e 7426

Comprimento 60 mm.



Allen	Ref.	Torque N.m
13	SA5 13	194,9
14	SA5 14	243,4
15	SA5 15	299,4
16	SA5 16	363,4
17	SA5 17	435,8
18	SA5 18	517,4
19	SA5 19	608,5
20	SA5 20	709,7
22	SA5 22	944,6
24	SA5 24	1226,4
25	SA5 25	1386,2
27	SA5 27	1746,2
30	SA5 30	2395,3
32	SA5 32	2907,0
34	SA5 34	3486,9
36	SA5 36	4139,1
1/2"	SA5 1/2	181,7
9/16"	SA5 9/16	254,0
5/8"	SA5 5/8	349,9
11/16"	SA5 11/16	453,0
3/4"	SA5 3/4	613,3
13/16"	SA5 13/16	778,9
7/8"	SA5 7/8	973,2
1"	SA5 1	1453,8
1.1/8"	SA5 1.1/8	2068,8
1.1/4"	SA5 1.1/4	2839,4
1.5/16"	SA5 1.5/16	3293,6
1.3/8"	SA5 1.3/8	3777,7
1.1/2"	SA5 1.1/2	4906,5

Fabricamos medidas especiais.

Não utilizar com máquina de impacto.

É importante a regulagem do torque de acordo com a medida do soquete.

As medidas podem sofrer alterações sem prévio aviso.

Soquete Allen

Encaixe □ 1"

DIN 3129 e 7426

Comprimento 65 mm.



Allen	Ref.	Torque N.m
17	SA6 17	435,8
18	SA6 18	517,4
19	SA6 19	608,5
20	SA6 20	709,7
22	SA6 22	944,6
24	SA6 24	1226,4
25	SA6 25	1386,2
27	SA6 27	1746,2
30	SA6 30	2395,3
32	SA6 32	2907,0
34	SA6 34	3486,9
36	SA6 36	4139,1
38	SA6 38	4868,0
40	SA6 40	5677,8
42	SA6 42	6572,8
44	SA6 44	7557,2
46	SA6 46	8635,3
48	SA6 48	9811,3
11/16"	SA6 11/16	453,0
3/4"	SA6 3/4	613,3
13/16"	SA6 13/16	778,9
7/8"	SA6 7/8	973,2
1"	SA6 1	1453,8
1.1/8"	SA6 1 1/8	2068,8
1.1/4"	SA6 1 1/4	2839,4
1.5/16"	SA6 1 5/16	3293,6
1.3/8"	SA6 1.3/8	3777,7
1.7/16"	SA6 1.7/16	4314,0
1.1/2"	SA6 1.1/2	4906,5
1.9/16"	SA6 1.9/16	5509,2
1.5/8"	SA6 1.5/8	6240,5
1.3/4"	SA6 1.3/4	7765,2
1.7/8"	SA6 1.7/8	9568,1

Fabricamos medidas especiais.

Não utilizar com máquina de impacto.

É importante a regulagem do torque de acordo com a medida do soquete.

As medidas podem sofrer alterações sem prévio aviso.

Soquete Allen

Encaixe □ 1.1/2"

DIN 3129 e 7426

Comprimento 100 mm.



Allen	Ref.	Torque N.m
32	SA7 32	2907,0
34	SA7 34	3486,9
36	SA7 36	4139,1
38	SA7 38	4868,0
40	SA7 40	5677,8
42	SA7 42	6572,8
44	SA7 44	7557,2
46	SA7 46	8635,3
48	SA7 48	9811,3
50	SA7 50	11089,5
52	SA7 52	12474,2
55	SA7 55	14760,2
58	SA7 58	17309,6
60	SA7 60	19162,7
65	SA7 65	24363,7
70	SA7 70	30429,7
1.1/4"	SA7 1 1/4	2839,4
1.5/16"	SA7 1 5/16	3293,6
1.3/8"	SA7 1.3/5	3777,7
1.7/16"	SA7 1.7/16	4314,0
1.1/2"	SA7 1.1/2	4906,5
1.9/16"	SA7 1.9/16	5509,2
1.5/8"	SA7 1.5/8	6240,5
1.3/4"	SA7 1.3/4	7765,2
1.7/8"	SA7 1.7/8	9568,1
2"	SA7 2	11630,4
2.1/4"	SA7 2.1/4	16559,7
2.3/8"	SA7 2.3/8	19471,4
2.1/2"	SA7 2.1/2	22715,6
2.5/8"	SA7 2.5/8	26207,6
2.3/4"	SA7 2.3/4	30234,4

Fabricamos medidas especiais.

Não utilizar com máquina de impacto.

É importante a regulação do torque de acordo com a medida do soquete.

As medidas podem sofrer alterações sem prévio aviso.

Soquete Allen articulado

Encaixe □ 3/8"

DIN 3129 e 7426

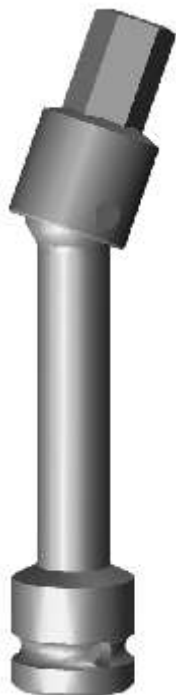


Allen	Comprimento				Torque N.m
	63	100	150	200	
5	SAA2 5 63	SAA2 5 100	SAA2 5 150	SAA2 5 200	11,0
6	SAA2 6 63	SAA2 6 100	SAA2 6 150	SAA2 6 200	19,1
7	SAA2 7 63	SAA2 7 100	SAA2 7 150	SAA2 7 200	30,4
8	SAA2 8 63	SAA2 8 100	SAA2 8 150	SAA2 8 200	45,4
9	SAA2 9 63	SAA2 9 100	SAA2 9 150	SAA2 9 200	64,6
10	SAA2 10 63	SAA2 10 100	SAA2 10 150	SAA2 10 200	88,7
11	SAA2 11 63	SAA2 11 100	SAA2 11 150	SAA2 11 200	105,2
12	SAA2 12 63	SAA2 12 100	SAA2 12 150	SAA2 12 200	105,2
13	SAA2 13 63	SAA2 13 100	SAA2 13 150	SAA2 13 200	105,2
14	SAA2 14 63	SAA2 14 100	SAA2 14 150	SAA2 14 200	105,2
5/16"	SAA2 5/16 63	SAA2 5/16 100	SAA2 5/16 150	SAA2 5/16 200	44,7
3/8"	SAA2 3/8 63	SAA2 3/8 100	SAA2 3/8 150	SAA2 3/8 200	76,5
7/16"	SAA2 7/16 63	SAA2 7/16 100	SAA2 7/16 150	SAA2 7/16 200	105,2
1/2"	SAA2 1/2 63	SAA2 1/2 100	SAA2 1/2 150	SAA2 1/2 200	105,2
9/16"	SAA2 9/16 63	SAA2 9/16 100	SAA2 9/16 150	SAA2 9/16 200	105,2

Soquete Allen articulado

Encaixe □ 1/2"

DIN 3129 e 7426



Allen	Comprimento				Torque N.m
	75	100	150	200	
6	SAA3 6 75	SAA3 6 100	SAA3 6 150	SAA3 6 200	19,1
7	SAA3 7 75	SAA3 7 100	SAA3 7 150	SAA3 7 200	30,1
8	SAA3 8 75	SAA3 8 100	SAA3 8 150	SAA3 8 200	45,4
9	SAA3 9 75	SAA3 9 100	SAA3 9 150	SAA3 9 200	64,6
10	SAA3 10 75	SAA3 10 100	SAA3 10 150	SAA3 10 200	88,7
11	SAA3 11 75	SAA3 11 100	SAA3 11 150	SAA3 11 200	118,8
12	SAA3 12 75	SAA3 12 100	SAA3 12 150	SAA3 12 200	153,3
13	SAA3 13 75	SAA3 13 100	SAA3 13 150	SAA3 13 200	168,4
14	SAA3 14 75	SAA3 14 100	SAA3 14 150	SAA3 14 200	168,4
15	SAA3 15 15	SAA3 15 100	SAA3 15 150	SAA3 15 200	168,4
16	SAA3 16 75	SAA3 16 100	SAA3 16 150	SAA3 16 200	168,4
17	SAA3 17 75	SAA3 17 100	SAA3 17 150	SAA3 17 200	168,4
5/16"	SAA3 5/16 75	SAA3 5/16 100	SAA3 5/16 150	SAA3 5/16 200	44,7
3/8"	SAA3 3/8 75	SAA3 3/8 100	SAA3 3/8 150	SAA3 3/8 200	76,5
7/16"	SAA3 7/16 75	SAA3 7/16 100	SAA3 7/16 150	SAA3 7/16 200	121,3
1/2"	SAA3 1/2 75	SAA3 1/2 100	SAA3 1/2 150	SAA3 1/2 200	168,4
9/16"	SAA3 9/16 75	SAA3 9/16 100	SAA3 9/16 150	SAA3 9/16 200	168,4
5/8"	SAA3 5/8 75	SAA3 5/8 100	SAA3 5/8 150	SAA3 5/8 200	168,4
11/16"	SAA3 11/16 75	SAA3 11/16 100	SAA3 11/16 150	SAA3 11/16 200	168,4

Fabricamos medidas especiais.

Não utilizar com máquina de impacto.

É importante a regulagem do torque de acordo com a medida do soquete.

As medidas podem sofrer alterações sem prévio aviso.

A vida útil depende fundamentalmente dos cuidados na aplicação.

Soquete Torx



Encaixe □ 1/4"

Comprimento 39 mm

Torx nº	Ref.	Ø A
10	ST 1 10	2,71
15	ST 1 15	3,25
20	ST 1 20	3,83
25	ST 1 25	4,38
27	ST 1 27	4,95
30	ST 1 30	5,48
40	ST 1 40	6,60

Encaixe □ 3/8"

Torx nº	Ref.	Compr.	Ø A
10	ST 2 10	48	2,71
15	ST 2 15		3,25
20	ST 2 20		3,83
25	ST 2 25		4,38
27	ST 2 27		4,95
30	ST 2 30		5,48
40	ST 2 40	55	6,60
45	ST 2 45		7,77
50	ST 2 50		8,78
55	ST 2 55		11,17

Encaixe □ 3/4"

Comprimento 80 mm

Torx nº	Referência	Ø A
55	ST 5 55	11,17
60	ST 5 60	13,21
70	ST 5 70	15,55
80	ST 5 80	17,75

Encaixe □ 1/2"

Torx nº	Ref.	Compr.	Ø A
27	ST 3 27	52	4,95
30	ST 3 30	59	5,48
40	ST 3 40		6,60
45	ST 3 45		7,77
50	ST 3 50		8,78
55	ST 3 55		11,17
60	ST 3 60	75	13,21
70	ST 3 70		15,49
55	ST 3 55 100		100
55	ST 3 55 180	180	11,17
60	ST 3 60 100	100	13,21
70	ST 3 70 100	100	15,55
80	ST 3 80 100	100	17,75

Não utilizar com máquina de impacto.

É importante verificar que o torque aplicado seja correto para cada medida de parafuso.

A marca Torx e Torx Plus são marcas registradas de Acument Intellectual Properties.

Soquete Multidente



Encaixe □ 3/8"

Multidente	Referência
5	SMD 2 5
6	SMD 2 6
8	SMD 2 8

Encaixe □ 1/2"

Multidente	Referência	Compr.
6	SMD 3 6 70	70
8	SMD 3 8 70	70
8	SMD 3 8 100	100
9	SMD 3 9 140	140
10	SMD 3 10 100	100
10	SMD 3 10 140	140
12	SMD 3 12 100	100
12	SMD 3 12 150	150
14	SMD 3 14 70	70
14	SMD 3 14 100	100
16	SMD 3 16 70	70

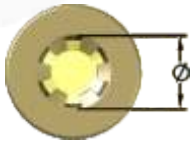
Encaixe □ 3/4"

Multidente	Referência	Comprimento
14	SMD 5 14 80	80
16	SMD 5 16 80	80

Não utilizar com máquina de impacto.

Soquete Ribe

Encaixe □ 1/2"



Ponta com ângulo de 5°



Ribe	Ø do parafuso	Comprimento	Referência
6R	7 mm	85	SR 6 85
6R	7 mm	200	SR 6 200
8R	9 mm	100	SR 8R 100
8R	9 mm	140	SR 8R 140
8R	9 mm	240	SR 8R 240
8S	10 mm	100	SR 8S 100
10S	12 mm	100	SR 12 100
10S	12 mm	140	SR 12 140
12S	14 mm	100	SR 14 100
12S	14 mm	140	SR 14 140

Verificar as normas da FIAT para a substituição dos parafusos dos cabeçotes , torque e ângulo de apêto.

Não utilizar com máquina de impacto.

Soquete Dentado

Encaixe □ 1/2"



Ponta reta

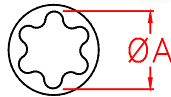


Comprimento 100 mm

Ø mm	Referência
5	SD3 5 100
6	SD3 6 100
7	SD3 7 100
8	SD3 8 100
9	SD3 9 100
10	SD3 10 100
12	SD3 12 100
14	SD3 14 100

Não utilizar com máquina de impacto.

Soquete Torx Interno



Encaixe □ 1/4"

Compr. 25 mm

Tx E	Ref.	Ø A
4	STI 1 4	3,84
5	STI 1 5	4,72
6	STI 1 6	5,69
7	STI 1 7	6,17
8	STI 1 8	7,47
10	STI 1 10	9,37

Encaixe □ 3/8"

Compr. 34 mm

Tx E	Ref.	Ø A
5	STI 2 5	4,72
6	STI 2 6	5,69
7	STI 2 7	6,17
8	STI 2 8	7,47
10	STI 2 10	9,37
11	STI 2 11	10,05
12	STI 2 12	11,13
14	STI 2 14	12,95

Encaixe □ 1/2"

Tx E	Ref.	Ø A	Compr.
6	STI 3 6	5,69	38
7	STI 3 7	6,17	38
8	STI 3 8	7,47	38
10	STI 3 10	9,37	38
11	STI 3 11	10,05	38
12	STI 3 12	11,13	38
14	STI 3 14	12,85	38
16	STI 3 16	14,71	38
18	STI 3 18	16,64	38
20	STI 3 20	18,41	45
24	STI 3 24	22,10	45
28	STI 3 28	24,50	45

Encaixe □ 3/4"

Compr. 60 mm

Tx E	Ref.	Ø A
20	STI 5 20	18,41
24	STI 5 24	22,10
28	STI 5 28	24,50
32	STI 5 32	28,8

Encaixe □ 1"

Compr. 80 mm

Tx E	Ref.	Ø A
20	STI 6 20	18,41
24	STI 6 24	22,10
28	STI 6 28	24,50
32	STI 6 32	28,8

Canhão Torx Interno



TX E	Compr. 50 mm	Compr. 75 mm	Compr. 100 mm	Ø A	Ø externo
4	CCTXI 4 50	CCTXI 4 75	CCTXI 4 100	3,84	6,5
5	CCTXI 5 50	CCTXI 5 75	CCTXI 5 100	4,72	6,5
6	CCTXI 6 50	CCTXI 6 75	CCTXI 6 100	5,69	8,5
7	CCTXI 7 50	CCTXI 7 75	CCTXI 7 100	6,17	9,5
8	CCTXI 8 50	CCTXI 8 75	CCTXI 8 100	7,47	10,5